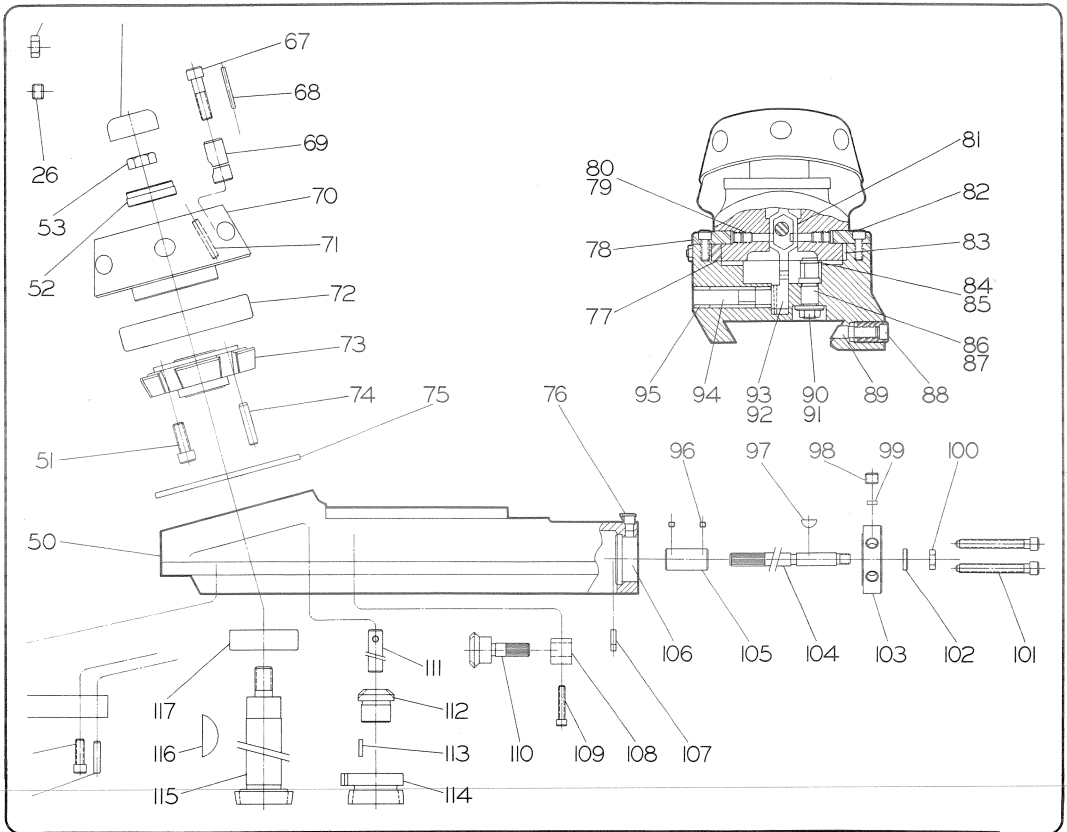




PARTS LIST

Hardinge DV Five-Nine™, DSM Five-Nine™,
DSM Five-Nine R, VBS™, and VBS-R
Super Precision® Machines



HARDINGE BROTHERS, INC. ELMIRA, NEW YORK 14902

\$15.00

PL-12A
December, 1983

HOW TO ORDER REPLACEMENT PARTS

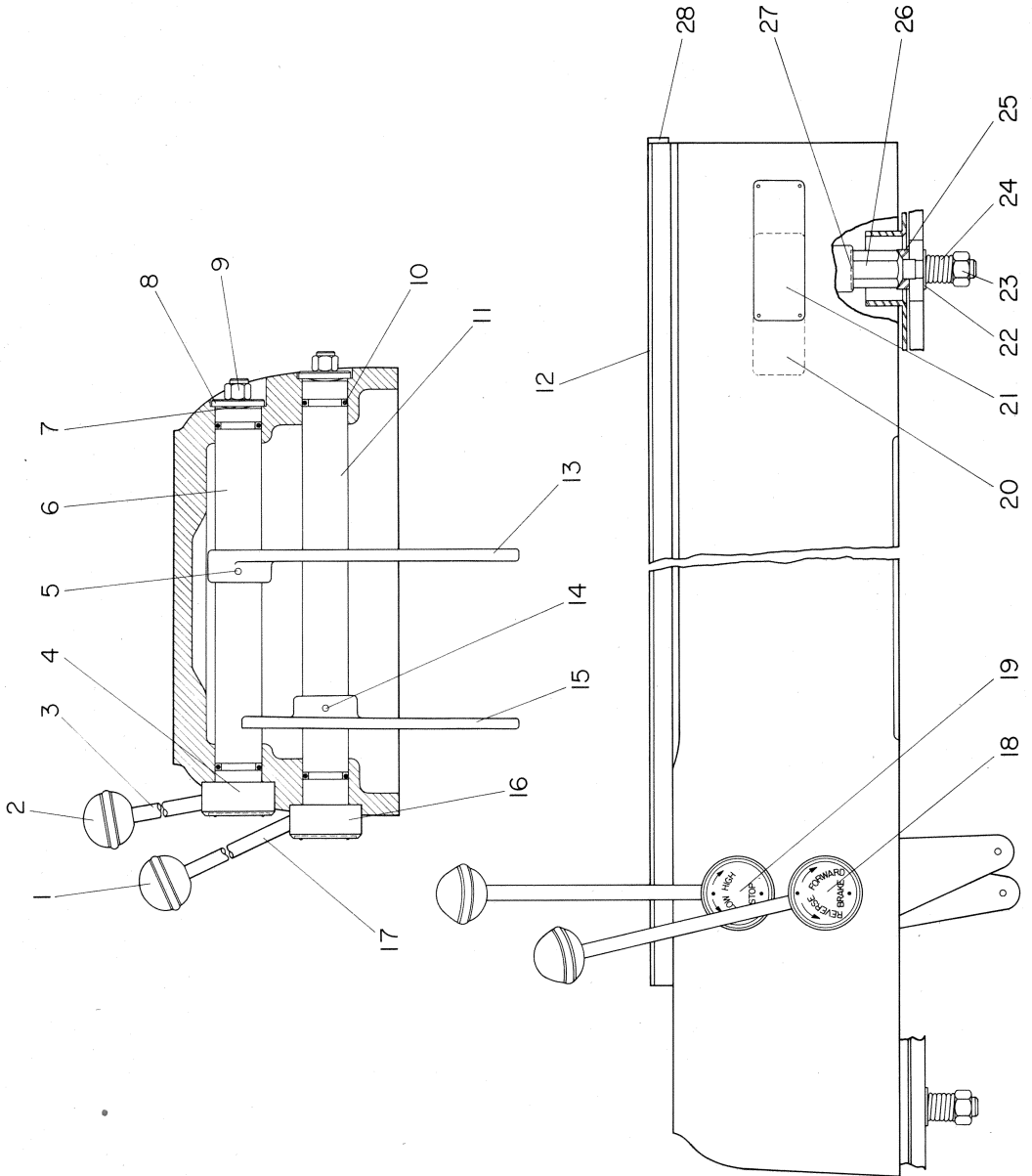
When ordering replacement parts, please provide the following information:

- 1. Include the complete serial number of the machine. (Serial number is located on rear of headstock.)**
- 2. Give the parts list ID number (PL-12A), page number, key number, part name, and part number.**
- 3. Indicate quantity of each part required.**
- 4. Specify how and where to ship.**

HARDINGE BROTHERS, INC.
Elmira, New York 14902

Air-Lube Regulator	18
Bed Assembly	2
Collet Board Assembly	46
Collet Closer	
Air-Operated	
Collet Closer Subassembly	10
Foot-Actuated Control	14
Hand Actuated Control	12
Mechanical	
#21 B&S Subassembly	16
Draw Spindle and Wrench	17
Standard Subassembly (5C Collet)	8
Compound Slide Rest	56
Coolant Facilities	32
Counter Shaft Assembly (DSM Five-Nine R and VBS-R)	30
Double Tool Cross Slide	40
Electric Control Case	
DV Five-Nine, DSM Five-Nine, and VBS	52
DSM Five-Nine R and VBS-R	54
End-Working Slide	36
Front and Rear Tool Holder Assembly	42
Headstock	
DV Five-Nine, DSM Five-Nine, and VBS	4
DSM Five-Nine R and VBS-R	6
Pedestal Assembly	
DV Five-Nine, DSM Five-Nine, and VBS	48
DSM Five-Nine R and VBS-R	50
Radius Turning Attachment	58
Spindle Brake Assembly	
New Style (DC Brake)	22
Old Style (AC Brake)	24
Spindle Drive Motor Mounting Plate Assembly	20
Steady Rest	20
Straight and Taper Turning Attachment	38
Tailstock	34
Turret Assembly	
4-Station Square Shank Tooling	47
6-Station Round Shank Tooling	60
Variable Speed Actuator	28
Variable Speed Control Box	44
Variable Speed Pulley Assembly	26
Vertical Cut-Off Attachment	62

BED ASSEMBLY

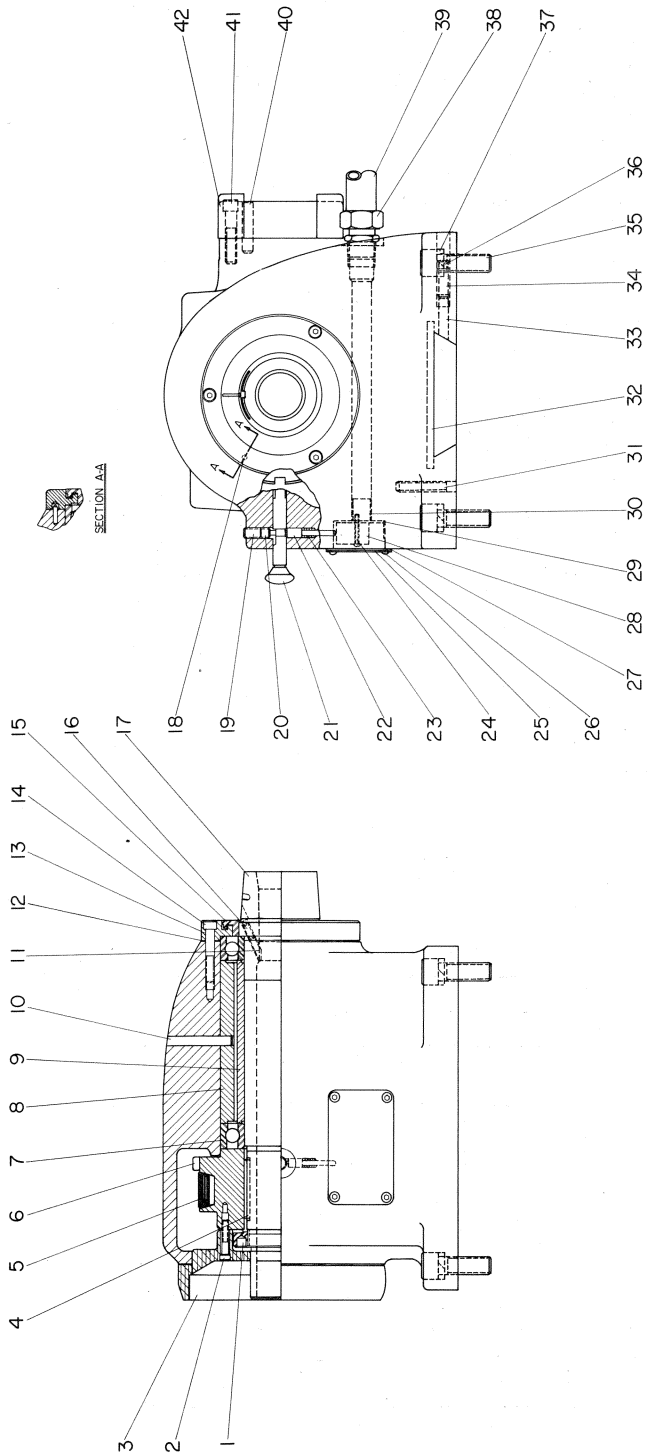


KEY	PART NUMBER	PCS	NAME
1	M D 0 0 0 3 2 8 5	1	Knob
2	M D 0 0 0 3 2 8 5	1	Knob
3	R A 0 0 0 6 2 3 9	1	Handle
*4	6 C 0 0 0 6 2 3 7	1	Lever Hub
*5	M D 0 0 0 3 2 7 7	1	Taper Pin
*6	V D 0 0 0 4 0 5 1	1	Shaft For Speed Lever
7	D V 0 0 0 1 0 5 9 7	2	Spring Washer
8	O L 0 0 0 7 6 2 1	2	Washer
9	S N 0 0 0 4 6 2 6	2	Nut
10	1 9 0 0 0 9 4 3 1	4	O-Ring
†11	V D 0 0 0 4 0 5 0	1	Shaft For Reverse Lever
12	V D 0 0 0 8 0 4 2	1	Bed Plate
*13	V D 0 0 0 7 1 4	22	Screw
†14	M D 0 0 0 3 2 8 0	1	Speed Lever
†15	V D 0 0 0 3 2 7 7	1	Taper Pin
†16	6 C 0 0 0 6 2 3 7	1	Reverse Lever
17	R A 0 0 0 6 2 3 9	1	Lever Hub Handle

KEY	PART NUMBER	PCS	NAME
†18	V D 0 0 0 1 5 3 5	1	Reverse-Forward Plate
*19	R V 0 0 0 8 0 4 4	2	Pin
	V D 0 0 0 1 6 6 9	1	Speed Plate
20	R R 0 0 0 8 0 4 4	2	Pin
	F B 0 0 0 0 2 5 6	1	Nameplate (Rear)
21	R R 0 0 0 8 0 4 4	4	Pin
	H L 0 0 0 0 2 5 6	1	Nameplate (Front)
22	S P 0 0 0 6 4 3 3	4	Pin
23	S N 0 0 0 4 6 2 6	6	Washer
24	T A 0 0 0 6 5 5 3	3	Nut
25	2 2 0 0 0 8 2 6 6	3	Spring
26	5 6 A 0 0 0 8 2 6 5	3	Bed Bolt Washer
27	6 0 0 0 9 8 9 6	3	Hold Down Stud Washer
28	D V 0 0 0 1 0 9 9 5	1	Bed Plate Bumper

† *These components should be replaced as a set.
Contact a Hardinge sales representative.

HEADSTOCK (DV FIVE-NINE, DSM FIVE-NINE, AND VBS)



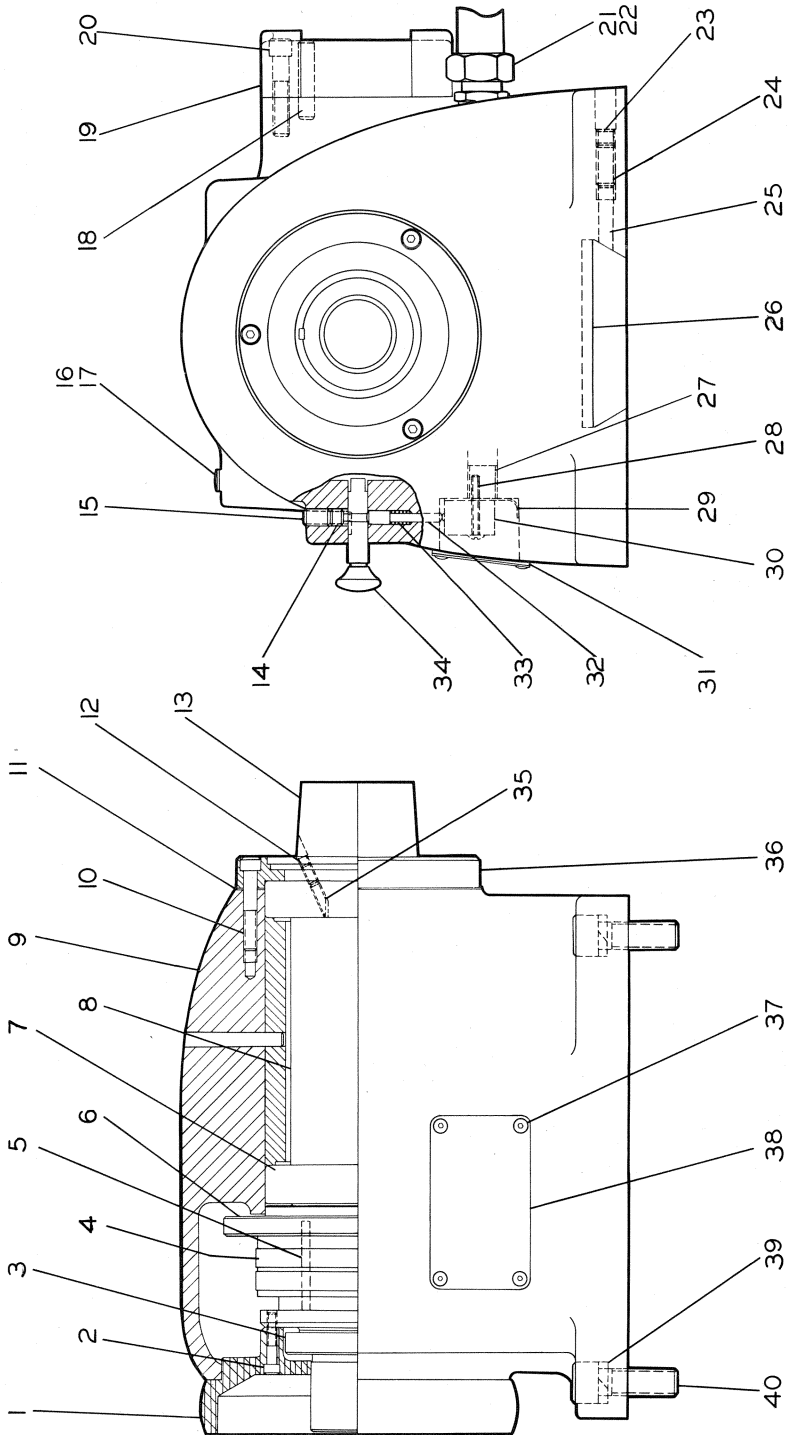
HEADSTOCK (DV FIVE-NINE, DSM FIVE-NINE, AND VBS)

KEY	PART NUMBER					PCS	NAME
	C	D	H	A			
18						1	Dowel Pin
19	L	H	A	0	0	1	Lock Screw
20	R			0	0	1	Screw
21	L	H		0	0	1	Spindle Lock Pin
22	L	H		0	0	1	Plunger
23	7	9		0	0	1	Spring
24				0	3	2	Screw
25	L	H		0	0	1	Nameplate
26				0	3	4	Screw
27	L	H		0	1	1	Seal
28	L	H		0	0	1	Limit Switch
29	V	D		0	0	1	Insulator
30	L	H		0	0	1	Insulator Sleeve
31	V	D		0	0	1	Bushing
32	H	C		0	0	1	Seal
33	D	V		0	0	1	Locking Plug
34				0	5	1	Screw
35				0	1	0	Screw
36				0	5	1	Lock Screw
37	H	L		0	0	1	Lock Washer
38	5	0		0	0	1	90° Connector
39	5	0		0	0	28	½" Conduit
40	F	B		0	0	2	Dowel
41				0	1	0	Screw
42	V	D		0	0	1	Collet Closer Bracket

* For repairs involving replacement of these components, headstock must be returned to factory. Contact a Hardinge sales representative for details.

KEY	PART NUMBER					PCS	NAME
	V	T	S	H	L		
*1	D					1	Spindle Nut
2	D	B				3	Screw
3	T	1				1	Handwheel
4	5	2				1	Key
5	V	D				1	Head Belt
*6	H	L				1	Pulley
*7	V	D				1 pr.	Bearings
*8	V	D				1	Bearing Shoulder
							Bushing
*9	S					1	Bearing Spacer
*10	V	D				1	Frame Assembly
							Consisting Of:
	V	D				1	Taper Pin
	V	D				1	Headstock Frame
	V	D				1	Bushing And
							Spacer Assembly
							(Consists Of Key
							Numbers 8 and 9)
11	3	7				1	Key Screw
12	V	D				1	Gasket
13	V	D				1	Front Cap
14						3	Screw
*15	7					1	Labyrinth Seal
16						1	Lock Screw
						1	(Taper Nose, B&S)
						1	Lock Screw
						1	(Threaded Nose)
						1	Lock Screw (Camlock)
*17	V	D				1	Spindle (Taper Nose)
*	V	D			D	1	Spindle (Threaded Nose)
*	V	D			C	1	Spindle (Camlock)
*	V	D			B C	1	Spindle (B&S)

HEADSTOCK (DSM FIVE-NINE R AND VBS-R)



HEADSTOCK (DSM FIVE-NINE R AND VBS-R)

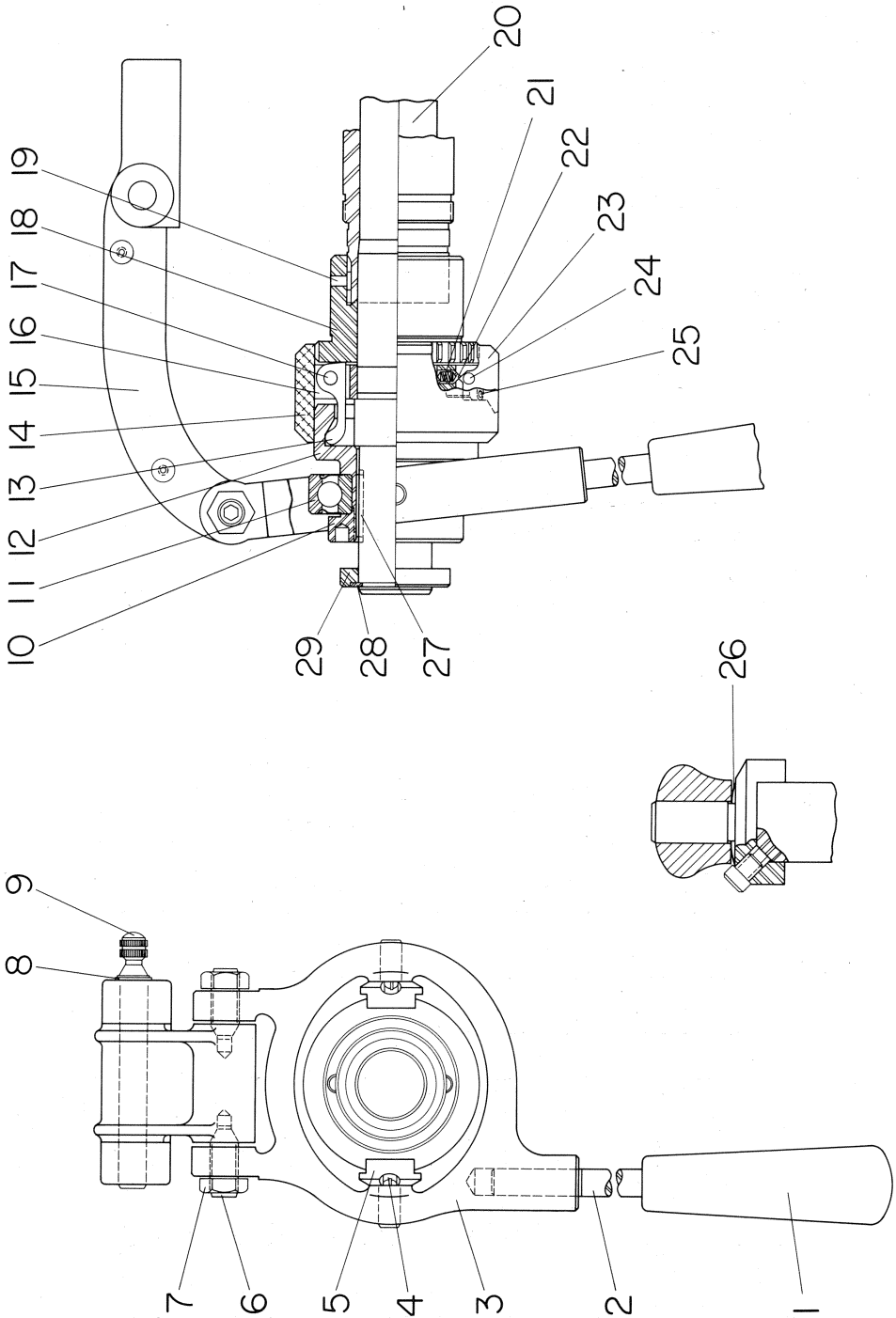
KEY	PART NUMBER						PCS	NAME
	V D B	0 0 0	0 0 0	0 3 1	6			
1							1	Handwheel
2							3	Screw
* 3	V D	0 0 0	4 0 6	8			1	Spindle Nut
4	V Q	0 0 0	9 6 2	5			1 pr.	Belts
5	T 1	0 0 0	8 9 7	9			1	Key
* 6	V Q	0 0 0	4 0 5	3			1	Pulley
* 7	H L A	0 0 0	0 2 6	5			1 pr.	Bearings
* 8	S	0 0 0	4 0 5	7			1	Bearing Spacer
* 9	V D B	0 0 0	0 2 6	4			1	Headstock Frame
	V D	0 0 0	4 0 5	2			1	Bearing Shoulder
	V D	0 0 0	7 8 6	4			1	Bushing
10							3	Taper Pin
11	V D	0 0 0	6 4 2	4			1	Screw
12							1	Gasket
							1	Screw (Taper Nose, and B&S Spindle)
							1	Screw (Threaded Nose Spindle)
							1	Screw (Camlock Spindle)
*13	7	0 0 0	6 4 1	8			1	Labyrinth Seal
	V D	0 0 0	0 2 8	3			1	Taper Nose Spindle
	V D	0 0 0	0 2 8	3	D		1	Threaded Nose Spindle
	V D	0 0 0	0 2 8	3	C		1	Camlock Spindle
14	R	0 0 0	0 2 8	3	B S		1	B&S Spindle
15	L H A	0 0 0	6 9 8	9			1	Screw
16	O R	0 0 0	0 3 5	8			1	Lock Screw
							1	O-Ring

KEY	PART NUMBER						PCS	NAME
	P B	0 0 0	0 0 0	0 3 1	1			
17							1	Dot Plug
18	F B	0 0 0	6 9 2	3			2	Dowel
19	V D	0 0 0	0 4 7	9			1	Collet Closer Bracket
20							3	Screw
21	5 0	0 0 1	0 8 2	4			1	1/2" 90° Connector
22	5 0	0 0 1	0 2 2	5	9 0		—	Conduit
23							1	Screw
24							1	Screw
25	D V A	0 5 5	1 0 1	2			1	Locking Plug
26	H C	0 0 0	9 9 2	3			1	Seal
27	L H	0 0 0	9 9 3	8			1	Insulator Sleeve
28							2	Screw
29	V D	0 3 5	0 1 1	4			1	Insulator
30	L H	0 0 1	1 0 6	3			1	Limit Switch
31	L H	0 0 1	0 2 2	4			1	Seal
32	L H	0 0 1	1 0 3	3			1	Plunger
33	7 9	0 0 0	1 4 2	4			1	Spring
34	L H	0 0 0	8 3 5	1			1	Lock Pin
35	3 7 A	0 0 0	0 2 7	9			1	Key Screw
36	V D	0 0 0	0 2 8	4			1	Front Cap
37							4	Screw
38	L H	0 3 0	0 1 0	6			1	Nameplate
39	H L	0 0 0	0 2 5	6			4	Lock Washer
40							4	Screw

† Parts are included in Headstock Frame Assembly, VD-0000263.

* For repairs involving replacement of these components, headstock must be returned to factory. Contact a Hardinge sales representative for details.

MECHANICAL COLLET CLOSER: STANDARD SUBASSEMBLY (5C COLLETS)



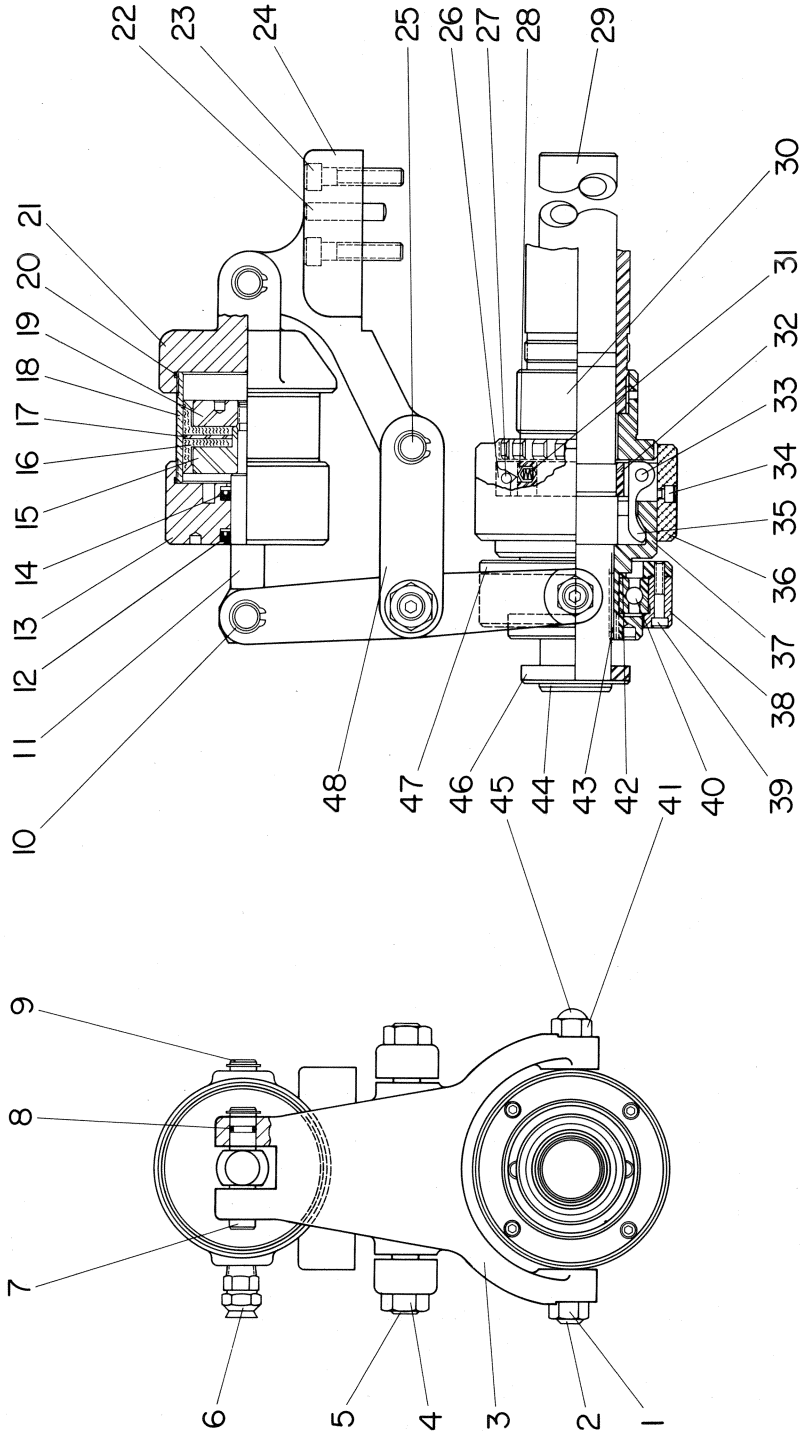
MECHANICAL COLLET CLOSER: STANDARD SUBASSEMBLY (5C COLLETS)

KEY	PART NUMBER										PCS	NAME
	D	V	0	0	0	0	0	4	9	1		
—											1	Adjusting Nut Assembly (Consists of Key #18 & 19)
18	D	V	0	0	0	0	0	4	9	2	1	Adjusting Nut
19	6		0	0	0	0	0	4	9	3	1	Key
20	6	B	0	0	0	0	0	4	8	0	1	Spindle (Tapered or Threaded Nose)
21	D	V	0	0	0	0	0	4	8	0	1	Spindle (Camlock)
22	3	7	0	0	0	0	0	4	9	0	1	Spring
23	3	7	0	0	0	0	0	4	8	9	1	Cap For Spring
24	3	7	B	0	0	0	0	4	8	7	1	Adjusting Finger
25	3	7	0	0	0	0	0	4	8	8	1	Retaining Pin For Adjusting Finger
26	L	H	0	1	0	0	3	0	8		4	Screw For Bracket
27	T	L	0	0	0	6	1	1	7		2	Spring For Swivel Block
28	1	3	1	0	0	8	2	3	1	0	1	Key for Clutch Cone
29	5	7	A	0	0	0	0	4	8	1	1	Retaining Ring
												Stop Ring For Clutch Cone

* Must be ordered together as Clutch Cone and Retaining Nut Assembly, 57A-0000496.

KEY	PART NUMBER										PCS	NAME
	R	C	0	0	0	0	5	0	0	0		
1	7	9	A	0	0	0	8	6	7	2	1	Lever Yoke Assembly (Consists of Key #1-3)
2	C	W	B	0	0	0	8	1	6	8	1	Handle For Lever
3	R	E	0	0	0	5	0	1			1	Lever
4	R	A	0	0	0	8	2	3	2		2	Lever Yoke
5	R	A	0	0	0	8	2	3	0		2	Screw For Bearing
6	6		0	0	0	9	0	3	4		2	Swivel Block
7	5	0	0	0	1	4	6	6			2	Pilot Screw
8	5	0	0	0	8	2	3	1	0	2	2	Nut
9	V	D	0	0	0	8	0	1	9		1	Retaining Ring
*10	R		0	0	0	8	2	2	2		1	Link Pin
11	R		0	0	0	8	2	3	3		1	Retaining Nut
*12	5	7	A	0	0	0	4	9	6	A	1	Bearing
13	3	7	A	0	0	0	4	8	5		3	Clutch Cone
14	R	G	A	0	0	0	4	9	4		1	Clutch Finger
15	V	D	A	0	0	0	5	0	3		1	Shell Guard
16	5	7	C	0	0	0	0	4	8	4	1	Connecting Link
17	5		0	0	0	2	0	2	4		3	Bracket For Clutch Cone
												Retaining Pin

AIR-OPERATED COLLET CLOSER SUBASSEMBLY

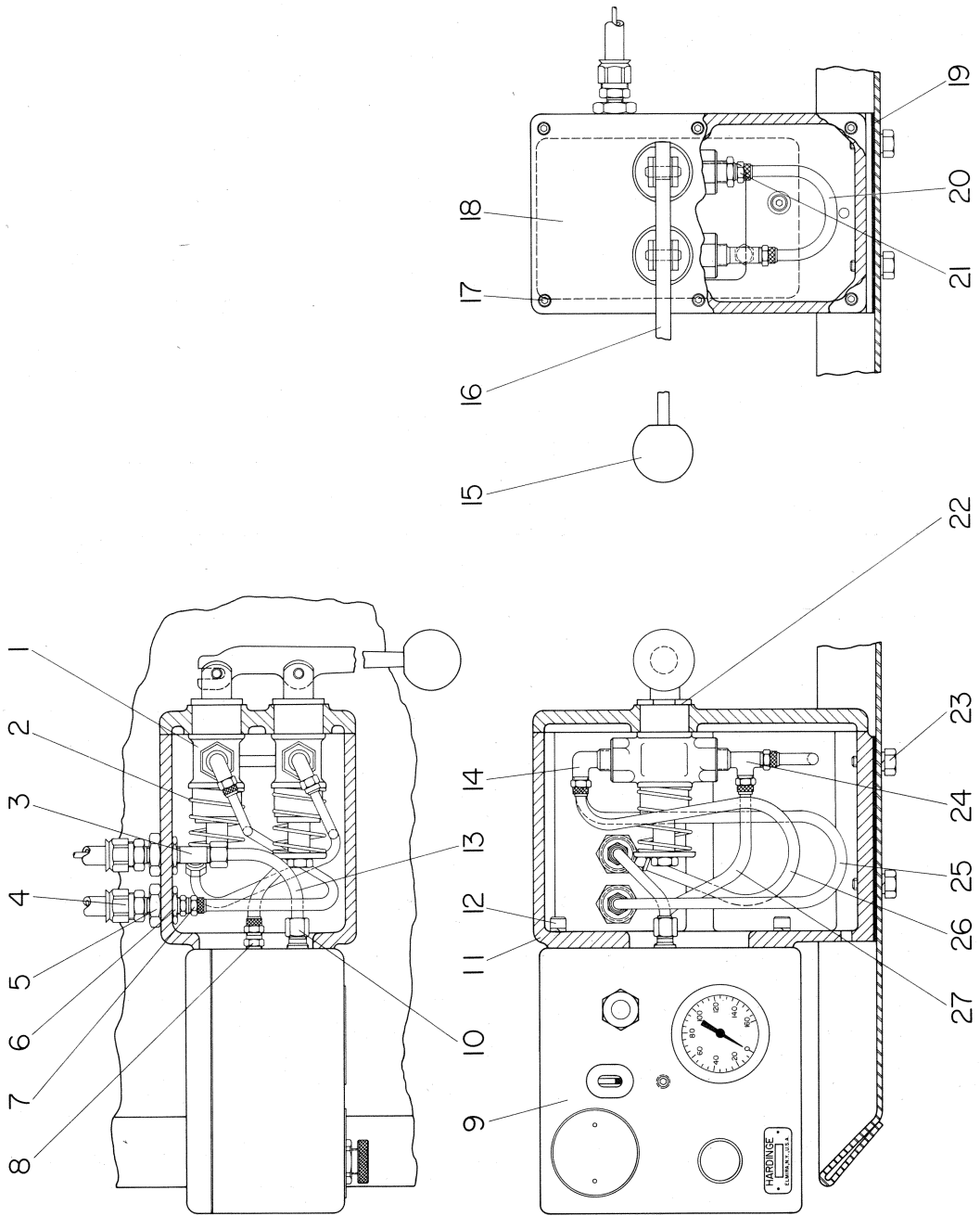


AIR-OPERATED COLLET CLOSER SUBASSEMBLY

KEY	PART NUMBER				NAME	PCS	PART NUMBER				PCS	NAME												
1	V	D	0	0	9	0	5	2				30	D	V	0	0	0	0	4	9	1	1	Adjusting Nut Assembly	
2	C	A	0	0	1	0	7	9				31	3	7	0	0	0	0	4	9	0	1	Adjusting Spring	
3	C	A	0	0	0	5	0	1				32	5	7	C	0	0	0	0	4	8	4	Bracket For Clutch Finger	
4	5		0	0	0	1	4	6				33	5			0	0	0	2	0	2	4	Dowel Pin	
5	C	A	0	0	0	9	0	3				34	5			0	1	0	0	3	0	8	Screw	
6*	F	H	0	0	1	0	7	8				35	3	7	A	0	0	0	0	4	8	5	Clutch Finger	
ort	F	H	0	0	0	7	0	2				36	3	7	A	0	0	0	0	4	8	5	Shell Guard	
7	F	H	0	0	0	7	0	2	0	5		37	R	G	A	0	0	0	0	4	9	4	Clutch Cone & Nut Assembly	
8	C	A	0	0	0	5	0	4	0	2		38	5	7	A	0	0	0	0	4	9	6	Bearing Housing	
9	O	R	0	0	0	6	0	8				39	5	7	A	0	0	0	0	4	9	6	Screw	
10	C	A	0	0	0	5	0	4	L			40	C	A	0	0	1	0	7	9	2	4	Bearing	
11	5	0	0	0	8	2	3	1	0	2		41	C	A	0	0	1	0	0	3	1	6	Nut	
12	C	A	A	0	0	1	0	7	7	2		42	C	A	0	0	0	8	2	3	3	1	Bearing Washer	
13	A	D	A	0	0	1	0	7	7	5	0	42	A	M	0	0	0	9	0	5	2	1	Retaining Ring	
14	C	A	D	0	0	1	0	7	6	8		43	A	M	0	0	1	0	7	9	1	1	Rubber Bumper	
15	A	D	0	0	1	1	1	9	8	4	8	43	T	L	0	0	0	6	1	1	7	1	Clutch Cone Stop Ring	
16	C	A	B	0	0	1	0	7	6	9		44	T	L	0	0	0	8	2	3	1	0	Bearing Plate	
17	C	A	A	0	0	1	0	7	7	5		45	1	3	1	0	0	0	8	2	3	1	0	Connecting Link (Used on Machines Equipped With a 5C Spindle)
18	C	A	A	0	0	1	0	7	7	0		46	U	E	0	0	1	0	5	4	1	1	Connecting Link (Used on Machines Equipped With a #21 Brown & Sharpe Spindle)	
19	C	A	B	0	0	1	0	7	7	6		47	5	7	A	0	0	0	0	4	8	1	With a 5C Spindle)	
20	O	R	0	0	0	4	0	4	3			48	C	A	0	0	1	0	7	9	0	1	on Machines Equipped With a #21 Brown & Sharpe Spindle)	
21	C	A	A	0	0	1	0	7	6	6			V	A	A	0	0	0	5	0	3			
22	F	B	0	0	0	6	9	2	3				B	S	A	0	0	0	0	5	0	3		
23	D	A	A	0	0	0	4	7	9															
24	D	A	A	0	0	0	4	7	9															
25	C	A	A	0	0	0	5	0	4	0	1													
26	3	7	B	0	0	0	4	8	7															
27	3	7	0	0	0	0	4	8	8															
28	3	7	0	0	0	0	4	8	9															
29	6	B	0	0	0	0	4	8	0															
	D	V	0	0	0	0	4	8	0	C														

*Used on Hand-Actuated Air Collet Closer.
 †Used on Foot-Actuated Air Collet Closer.

HAND-ACTUATED AIR COLLET CLOSER CONTROL ASSEMBLY

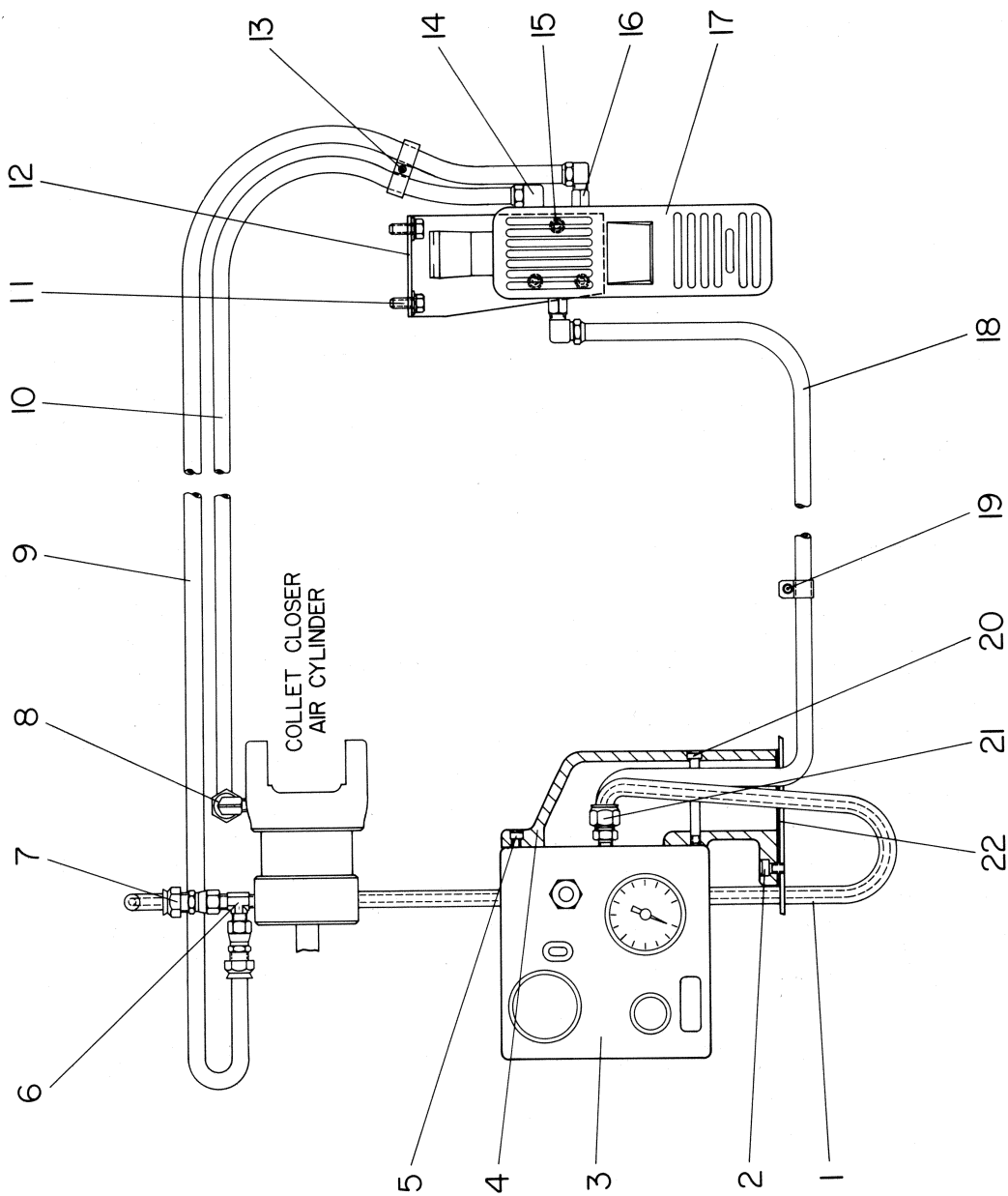


HAND-ACTUATED AIR COLLET CLOSER CONTROL ASSEMBLY

KEY	PART NUMBER							PCS	NAME
1	A	U	0	1	0	7	8	0	Valve
2	A	U	0	8	1	0	1	0	Spring
3	A	U	B	0	0	7	7	0	Male Tee
4	F	H	0	0	1	0	7	8	Male Pipe Connector
5	A	U	B	0	0	1	0	7	Bulkhead Union
6	U	E	0	0	0	4	7	3	Nut
7	2	6	8	0	0	7	7	0	Male Connector
8	2	6	8	0	0	7	7	0	Male Connector
9	A	U	B	0	1	0	7	7	Air-Lube Regulator
10	6	8	0	0	0	7	7	0	Male Connector
11	A	U	B	0	0	1	0	7	Valve Housing
12				0	1	0	6	1	Screw
13	C	M	0	0	0	2	8	4	Lock Washer
14	2	6	9	0	0	7	7	0	1/4" O.D. Tubing
15	A	U	0	0	0	7	7	0	Male Elbow
16	A	U	0	0	1	0	7	8	Knob
17				0	1	0	3	1	Handle
18	A	U	0	0	1	0	7	8	Screw
19	A	U	0	0	1	0	7	7	Valve Plate
20	A	H	0	0	0	7	0	0	Gasket
21	2	6	8	0	0	7	7	0	1/4" O.D. Tubing
*22	T	L	0	0	0	6	4	8	Male Connector
	T	L	0	0	0	8	0	5	.005" Shim Washer
				0	1	5	0	7	.010" Shim Washer
23	M	D	0	0	0	3	2	2	Screw
24	2	7	1	0	0	7	0	0	Lock Washer
25	A	H	0	0	0	7	0	0	Male Tee
26	A	H	0	0	0	7	0	0	1/4" O.D. Tubing
27	A	H	0	0	0	7	0	0	1/4" O.D. Tubing
				0	0	0	7	0	1/4" O.D. Tubing

*Quantity as required.

FOOT-ACTUATED AIR COLLET CLOSER CONTROL ASSEMBLY



FOOT-ACTUATED AIR COLLET CLOSER CONTROL ASSEMBLY

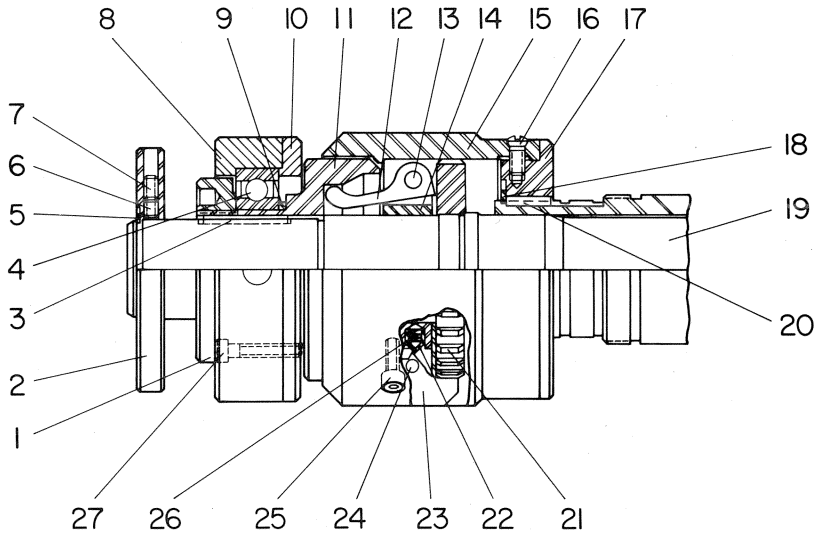
KEY	PART NUMBER										PCS	NAME
	C	T	A	U	B	0	1	0	7	8		
1	2	2									48"	1/4" I.D. Hose
2											106"	1/8" I.D. Hose
											2	Screw
											1	Screw
											4	Lock Washer
											3	Nut
3											1	Air-Lube Regulator Assembly
4											1	Regulator Support
5											1	Screw
6											1	Male Tee
7											2	Swivel Nut
8*											2	90° Elbow
†											1	Male Connector
9*											9'	1/4" I.D. Hose
†											8'	1/4" I.D. Hose
10*											8'	1/4" I.D. Hose
†											2	Screw
11*											2	Washer
*											2	Lock Washer
*											4	Screw
†											4	Lock Washer
†											4	Nut

KEY	PART NUMBER										PCS	NAME
	F	H	A	U	B	0	1	0	8	9		
12*											1	Valve Bracket
†											1	Valve Bracket
13											2	Clamp
											1	Washer
											1	Screw
											3	90° Elbow
14											3	Screw
15*											3	Screw
†											2	Adapter
16											1	Foot Valve
17											9'	1/4" I.D. Hose
18*											8'	1/4" I.D. Hose
†											1	Clamp
19											1	Washer
											1	Screw
											1	Screw
20											2	Male Connector
21											1	Gasket
22											1	

*Parts used on HC machines only.

†Parts used on DV-59 machine only.

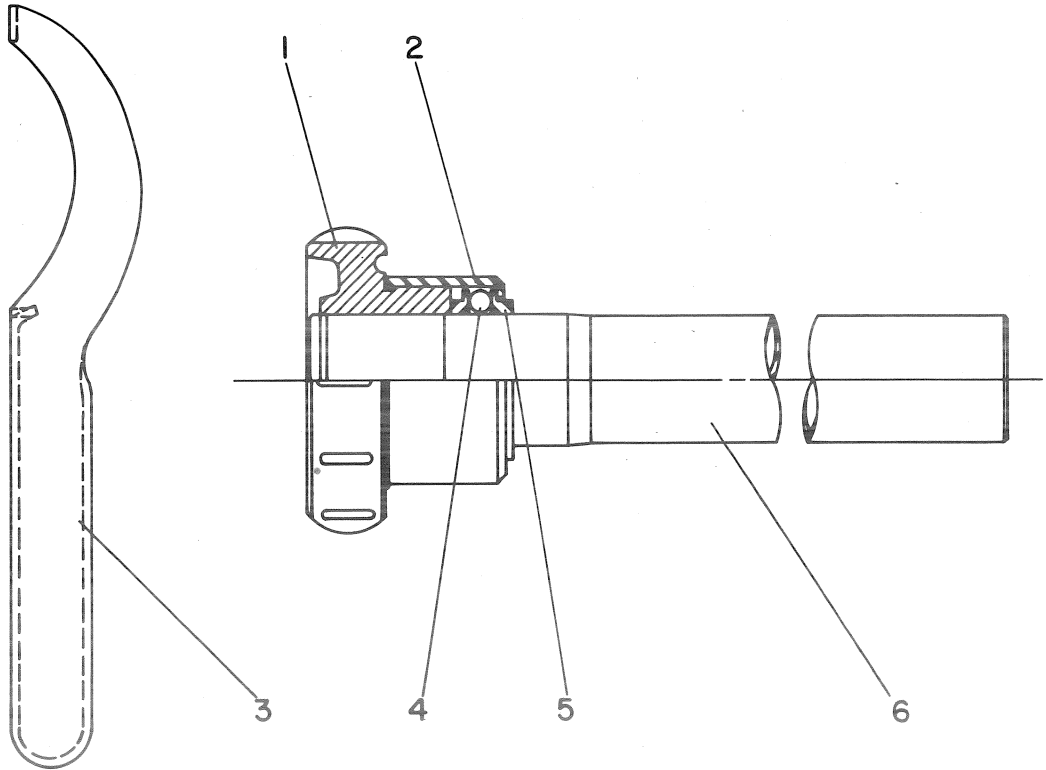
MECHANICAL COLLET CLOSER: #21 B&S SUBASSEMBLY



KEY	PART NUMBER										PCS	NAME	
*1	R			0	0	0	8	2	2	2		1	Retaining Nut
2	B	S		0	0	0	0	4	8	1		1	Stop Ring
3	T	L		0	0	0	6	1	1	7		1	Key
4	C	A		0	0	0	8	2	3	3		1	Bearing
5	1	3	1	0	0	0	8	2	3	1	0 8	1	Retaining Ring
6	R	A		0	0	0	8	2	3	8		1	Screw
7				0	5	5	0	3	0	5		1	Screw
8	C	A		0	0	1	0	7	9	2		1	Bearing Housing
9	C	A		0	0	1	0	7	9	1		1	Bearing Washer
10	C	A		0	0	1	0	7	9	0		1	Bearing Plate
*11	5	F	T	0	0	0	0	4	9	6	A	1	Clutch Cone
12	3	7	A	0	0	0	0	4	8	5		3	Clutch Finger
13	5			0	0	0	2	0	2	4		3	Dowel Pin
14	5	7	C	0	0	0	0	4	8	4		1	Clutch Finger Bracket
15	5	F	T	0	0	0	0	4	9	4		1	Shell Guard
16	3	7	A	0	0	0	0	4	9	5		2	Screw
17	7	B	S	0	0	0	0	5	0	8		1	Mount
18	1	8	1	0	0	0	8	2	3	1	0 2	1	Retaining Ring
19	B	S	B	0	0	0	0	4	9	0		1	Spindle
20	T	L		0	0	0	6	7	4	4		1	Key
21	F	T	A	0	0	0	0	4	9	2		1	Adjusting Collar
22	3	7		0	0	0	0	4	8	9		1	Cap
23	3	7	B	0	0	0	0	4	8	7		1	Adjusting Finger
24	3	7		0	0	0	0	4	8	8		1	Retaining Pin
25				0	1	0	0	3	0	8		4	Screw
26	3	7		0	0	0	0	4	9	0		1	Spring
27				0	1	0	0	3	1	6		4	Screw

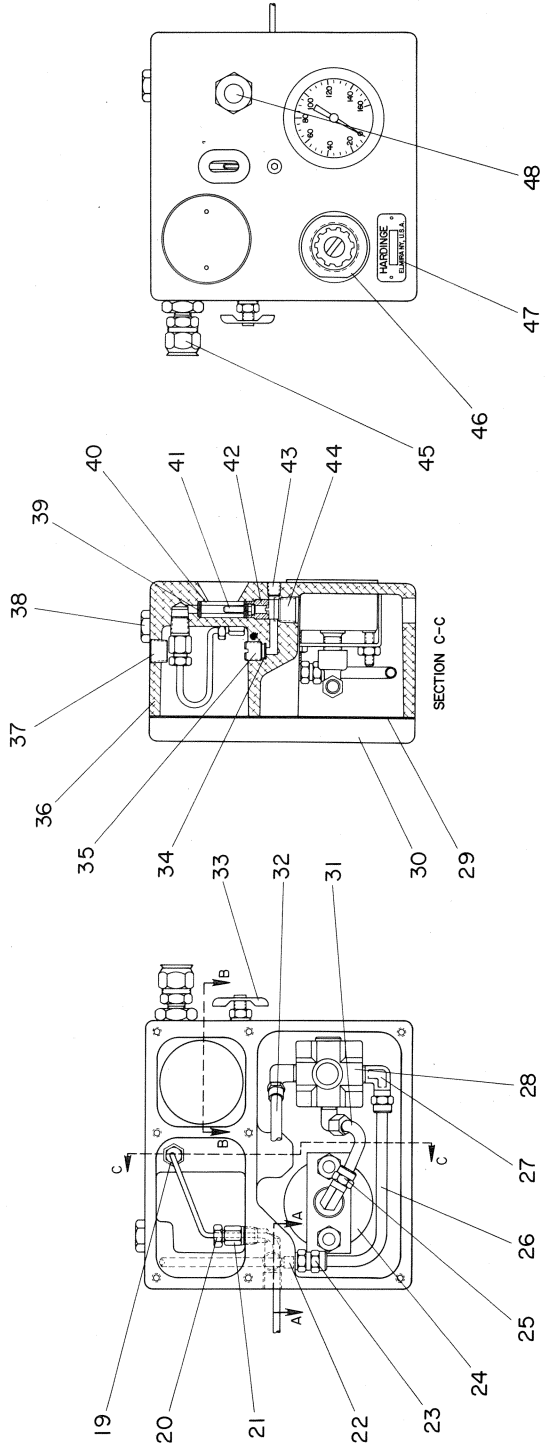
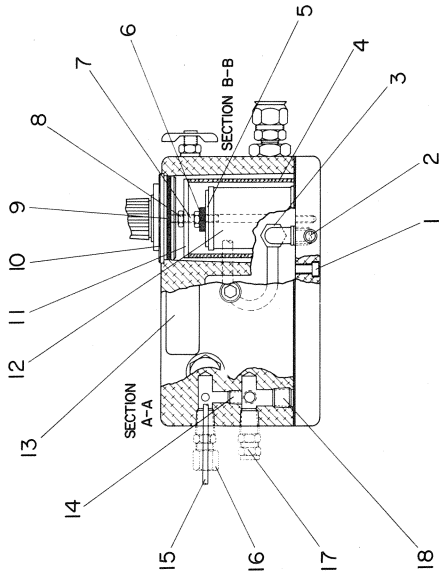
*These Parts must be ordered together as Clutch Cone and Nut Assembly, Part Number 5FT-496.

DRAW SPINDLE AND WRENCH



KEY	PART NUMBER										PCS	NAME	
1	L	H	0	0	0	0	2	8	5	W		Draw Spindle and Wrench Assembly	
1	F	B	A	0	0	0	0	3	0	2		1	Handle
2	F	B	A	0	0	0	1	8	6	5		1	Housing For Thrust Bearing
3	3	7	D	0	0	0	0	3	0	7		1	Spanner Wrench
4	T	L	0	0	0	6	0	5	8			22	1/4" Steel Ball
5	F	B	A	0	0	0	4	0	7	6		2	Thrust Bearing Ring
6	L	H	0	0	0	0	3	0	1			1	Draw Spindle

AIR-LUBE REGULATOR



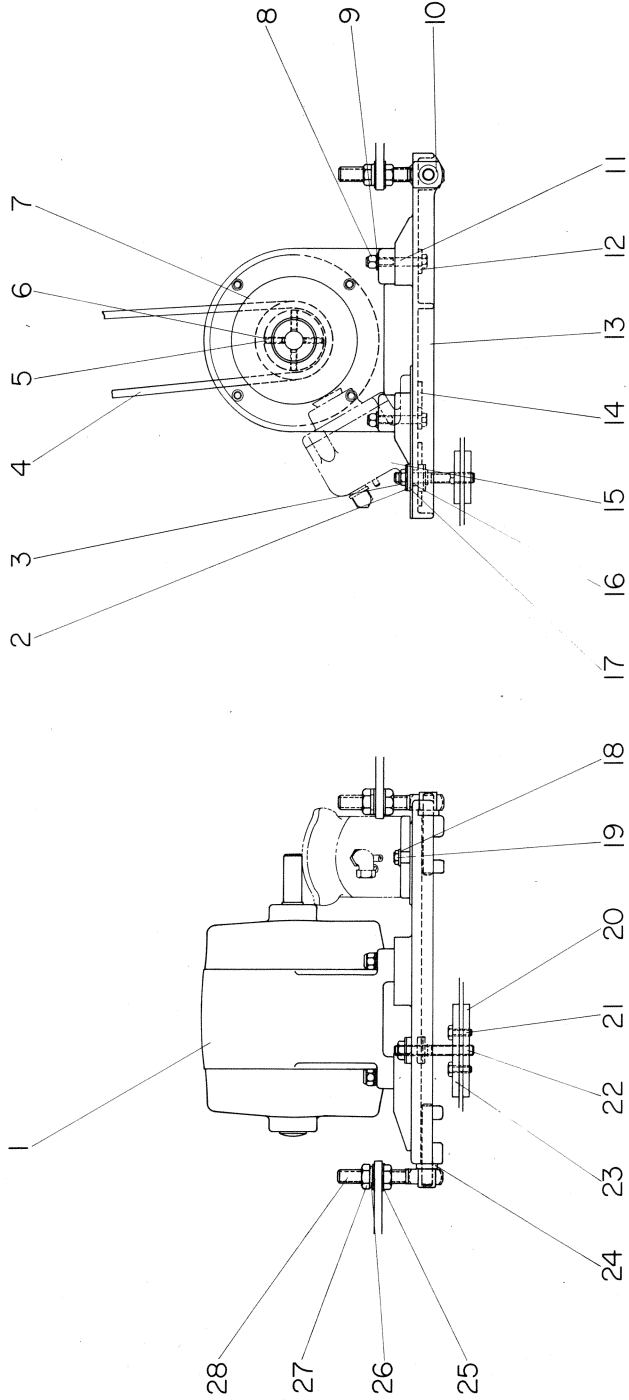
AIR-LUBE REGULATOR

KEY	PART NUMBER										PCS	NAME
22	L	0	1	0	7	0	0	0	3		1	Lee Plug
23	2	6	8	0	0	7	7	0	2	0	1	Male Connector
24	A	H	0	0	1	1	5	3	7		1	Air Gauge
25	2	7	0	0	0	7	7	0	2	0	1	90° Female Elbow
26	A	H	0	0	0	7	0	7	0		5 1/4"	Hose
27	2	6	9	0	0	7	7	0	2	0	3	Male Elbow
28	A	H	0	0	1	0	7	7	9		1	Regulator
29	A	U	B	0	0	1	1	6	2	9	1	Gasket
*30	A	U	B	0	0	1	1	6	2	8	1	Cover
31	A	H	0	0	0	7	0	7	0		2 1/2"	Hose
32	A	U	B	0	0	7	3	3	5		2 1/2"	Stiffener Spring
33	A	H	0	0	0	7	0	7	0		9"	Hose
34	A	H	0	0	1	1	5	2			1	Stiffener Spring
35	A	U	B	0	0	1	1	6	3	4	1	Drain Cock
36	A	U	B	0	0	1	1	6	3	4	1	Check Valve Gasket
37	5	A	U	B	0	0	1	1	6	2	7	Check Valve
38	A	D	0	0	0	1	9	1	4		1	Lubricator Body
39	O	R	0	0	0	0	3	6	4		1	Pipe Plug
40	A	U	B	0	0	1	1	6	3	2	1	Plug
41	A	U	B	0	0	1	1	6	3	3	2	O-Ring
42	A	U	B	0	0	1	1	6	3	0	1	O-Ring
43	0	6	2	0	0	0	1	4	6	7	1	Gauge Tube
44	5	F	H	0	0	1	9	1	4		1	Indicator Rod
45	F	H	0	0	1	0	7	8	7		1	Gauge Tube Retainer
46	A	H	0	0	1	0	7	9	0	1	1	Pipe Plug
47	A	U	B	0	0	0	4	6	9	8	1	Pipe Plug
48	R	A	H	0	0	0	8	0	4	4	2	Connector
	A	H	0	0	1	1	5	5	1		1	Nut
											1	Tag
											2	Pins
											1	Sight Gauge

*Can only be purchased as assembly AUG-0011628 consisting of Cover and Lee Plug.

KEY	PART NUMBER										PCS	NAME
1		0	1	0	3	1	2				8	Screw
*2	L	0	0	1	0	7	0	0	5		1	Lee Plug
3	2	6	9	0	0	7	0	2	0	4	1	Male Elbow
4	A	H	0	0	1	1	5	4	9		1	Shroud
5	C	M	0	0	2	8	4	6	0	1	1	Washer
6	A	H	0	0	1	1	5	5	3		1	Rubber Washer
7	A	U	B	0	0	1	0	6	6	5	1	Stud
8	M	D	0	0	0	2	8	8	3		2	Nut
9	O	R	0	0	0	2	8	3	0		1	O-Ring
10	A	U	B	0	0	1	1	6	3	1	1	Filter Compartment
11	A	H	0	0	1	1	5	5	0		1	Cover
12	A	H	0	0	1	1	3	5	0	3	1	Strap
13	A	U	B	0	0	1	0	3	6	6	1	Filter
14	R	0	0	0	8	0	4	4			2	Instruction Plate
	0	6	2	0	0	1	4	6	7		1	Pin
15	2	2	0	0	0	7	0	7		N	106"	Pipe Plug (Used only on Regulator for Collet Closer)
	2	2	0	0	0	7	0	7		N	50"	1/2" O.D. Hose Collet Closer
16	6	8	0	0	0	7	0	0	4		1	1/2" O.D. Hose Collet Closer
	F	H	0	0	1	0	7	8	7		1	Male Collector (Collet Closer)
17	2	6	8	0	0	7	0	2	0	4	1	Male Connector (Threading Head)
	5	0	0	0	1	4	6	7			1	Male Connector (Collet Closer)
18	5	0	0	0	1	4	6	7			1	Pipe Plug (Threading Head)
19	8	1	0	0	7	7	0	2	0	2	1	Pipe Plug
20	8	1	0	0	7	7	0	2	0	2	1	Tube Nut
21	8	8	0	0	0	7	7	0	3	0	1	Tube Nut
											1	Male Connector

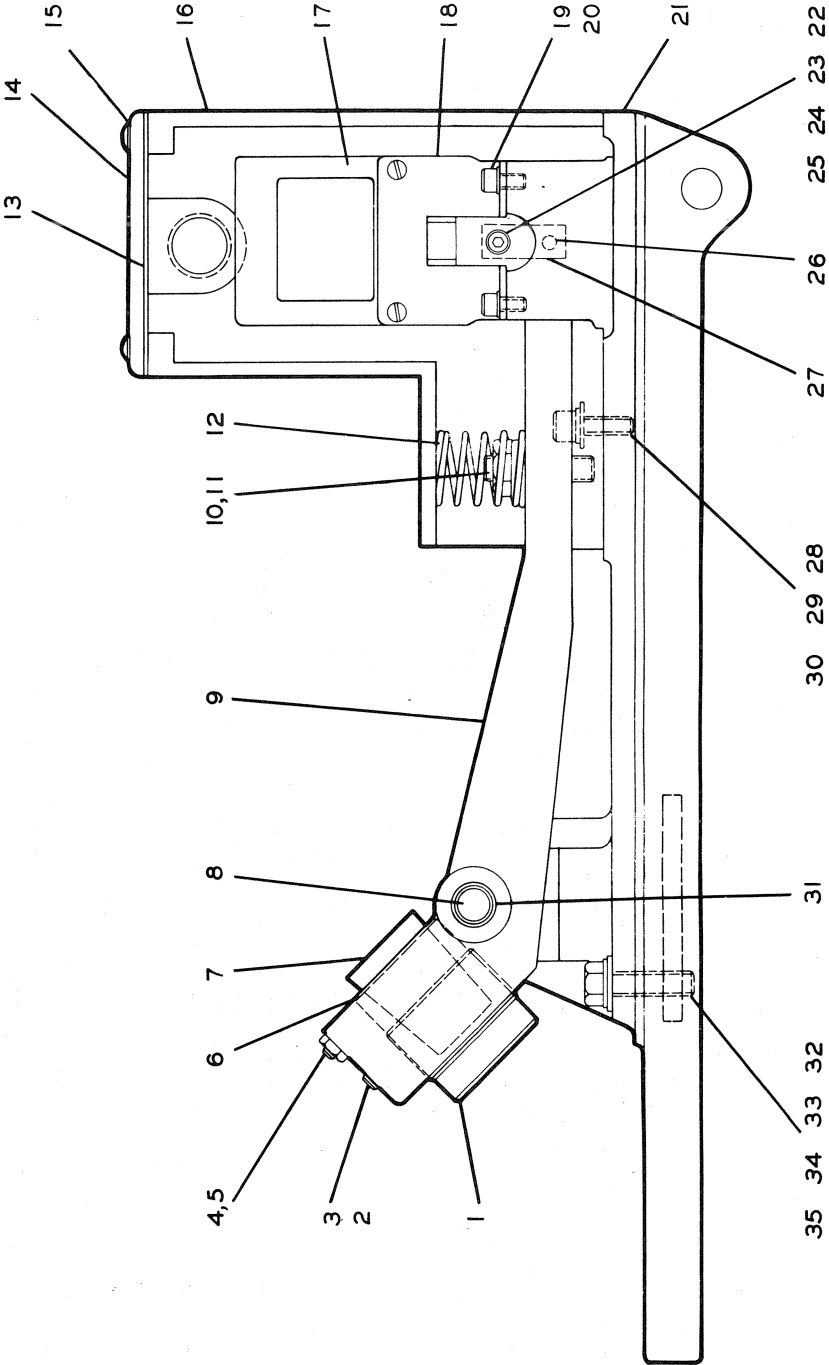
SPINDLE DRIVE MOTOR MOUNTING PLATE ASSEMBLY



SPINDLE BRAKE ASSEMBLY: NEW STYLE (DC BRAKE)

KEY	PART NUMBER										PCS	NAME	
	E	B	A	C	H	C	B	E	B	E			
1												1	Brake Housing
2												1	Coil
3												1	Armature Plate
4												1	Bushing Support
5												1	Brake Adjusting Bushing
6												1	Cork
7												1	Key Screw
8												1	Nut
9												1	Screw
10												1	Spring
11												1	Screw
12												1	Adjusting Screw
13												1	90° Connector
14												1	Insulator
												2	Wire (@ 48")
												2	Terminal

SPINDLE BRAKE ASSEMBLY: OLD STYLE (AC BRAKE)

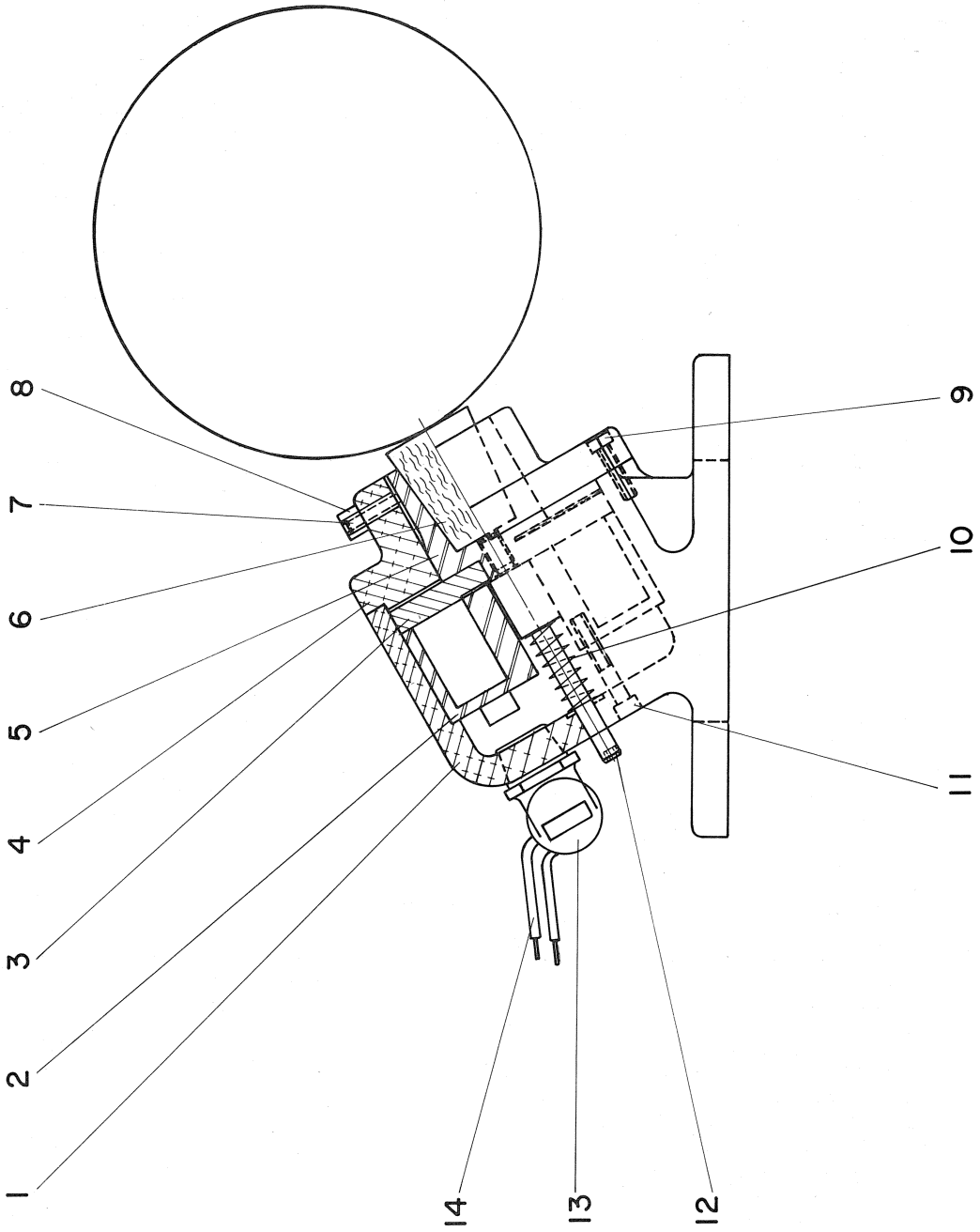


SPINDLE DRIVE MOTOR MOUNTING PLATE ASSEMBLY

KEY	PART NUMBER						PCS	NAME
	J	D	A	0	0	0		
7							1	Motor Pulley (250/460V, 60Hz Machines Only)
	V	D		0	0	3	1	Motor Pulley (All Other 60Hz Machines)
	V	D		0	0	3	1	Motor Pulley (All 50Hz Machines)
8	T	P		0	0	6	4	Nut
9	M	D		0	0	6	4	Washer
10	H	C	B	0	0	9	2	Stud For Plate
11				0	1	5	4	Bolt (Doerr Motors Only)
				0	1	5	4	Bolt (G.E. Motors Only)
12	W	A		0	0	9	4	Washer
13	J	D	A	0	0	1	1	Motor Mounting Plate (230/460V Machines Only)
	V	D	A	0	0	1	1	Motor Mount Plates (Not With 230/460V Machines)
14	D	V		0	0	1	2	Nut
15	E	B	A	0	0	9	1	Electric Brake Assembly
16	H	L		0	0	1	1	Insulator Bushing
17	H	L		0	0	9	2	Insulator Bushing
18	B	K		0	0	1	2	Washer
19	M	D		0	0	3	2	Lock Washer
20	H	L		0	1	5	2	Screw
21			A	0	0	9	1	Lower Plate
22	A	D		0	1	5	2	Screw
23	H	L	A	0	0	1	1	Support Screw
24	V	S		0	0	9	1	Upper Plate
25	3			0	0	9	2	Rubber Bushings
26	U			0	0	3	4	Washer
27	U	A		0	0	4	4	Lock Washer
28	D	V		0	0	1	2	Nut
				0	0	1	2	Hinge Bolt

KEY	PART NUMBER						PCS	NAME
	2	2	0	3	8	5		
1							1	Motor (200 Volt, 50 Hertz-230V, 50Hz)
	2	3	0	3	8	5	1	Motor (230V, 50Hz)
	4	1	5	3	8	5	1	Motor (380V, 50Hz-400V, 50Hz-415V, 50Hz-440V, 50Hz)
	2	0	T	3	8	6	1	Motor (208V, 60Hz)
	2	3	0	3	8	6	1	Motor (230V, 60Hz-200V, 50Hz-208V, 50Hz)
	2	3	D	3	9	6	1	Motor (230/460V, 60Hz)
	4	6	0	3	8	6	1	Motor (460V, 60Hz-380V, 50Hz-400V, 50Hz-415V, 50Hz)
	5	7	5	3	8	6	1	Motor (575V, 60Hz)
	7	5	0	0	1	0	4	¾ Str Connector (Except on 208V Machines)
	7	5	0	0	1	0	4	¾" 45° Connector (Only on 208V Machines)
	7	5	0	0	1	0	13"	¾" Conduit
2	C	M		0	0	1	3	Washer
3	5			0	0	2	1	Nut
4	V	S	G	0	0	1	1	Motor Belt
5	S	S		0	0	1	4	Set-Screw
6				0	5	5	4	Screw

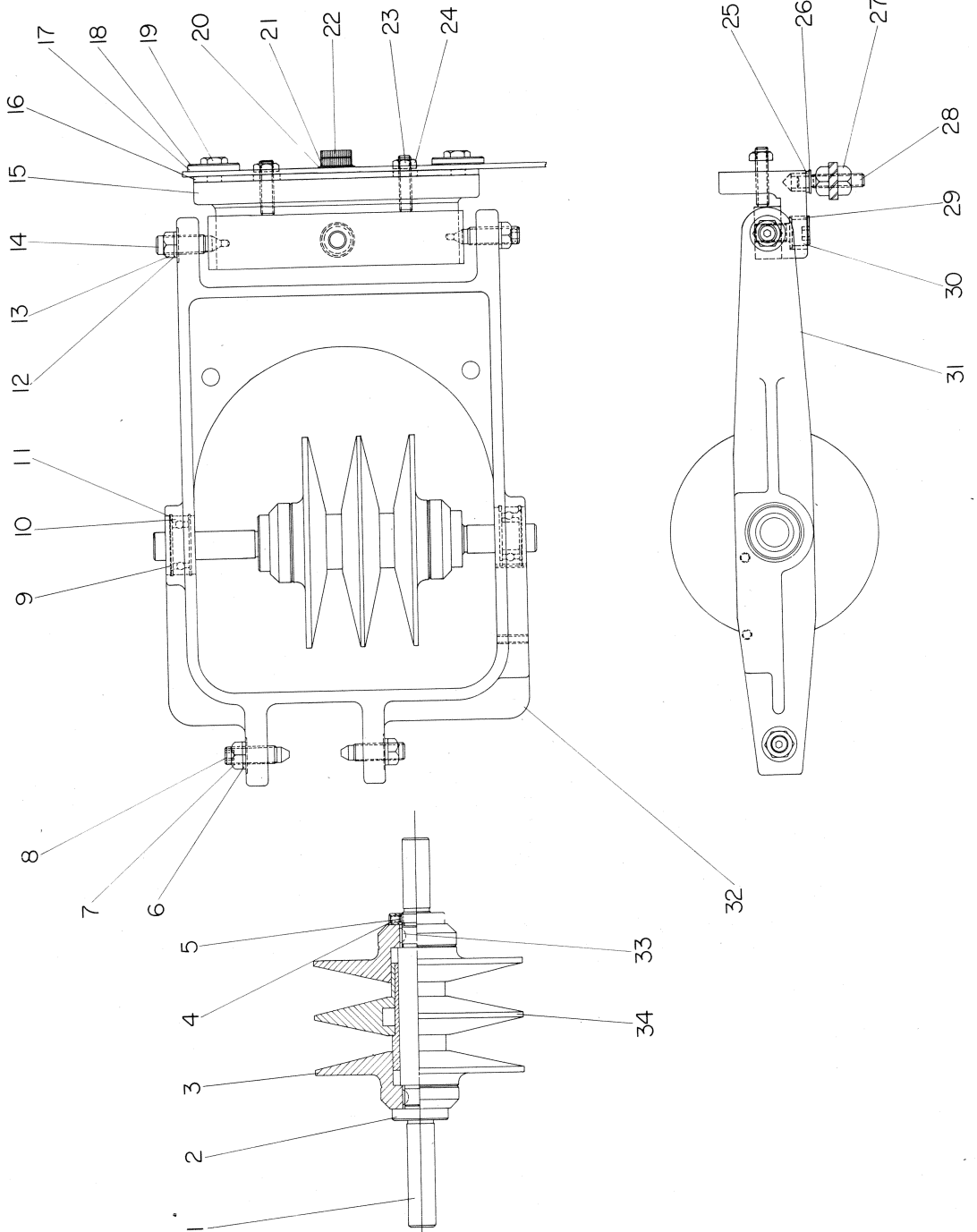
SPINDLE BRAKE ASSEMBLY: NEW STYLE (DC BRAKE)



SPINDLE BRAKE ASSEMBLY: OLD STYLE (AC BRAKE)

KEY	PART NUMBER										PCS	NAME	
1	B	K	A	0	0	0	0	9	6	5	6	1	Bushing Support Screw
2				0	5	0	6	0	8			1	Nylon Plug
3	N	6	W	0	0	9	4	5	0			1	Key
4	H	C	0	0	1	0	2	5	9			1	Nut
5	M	D	0	0	0	2	8	8	3			1	Adjusting Bushing
6	H	C	0	0	1	0	2	5	8			1	Cork
7	F	B	C	0	0	0	4	1	6	0		1	Pin
8	D	V	0	0	0	9	6	5	5			1	Brake Arm
9	D	V	A	0	0	0	9	6	5	3		1	Screw
10				0	5	5	1	0	2	4		1	Nut
11	3			0	0	0	1	4	2	5		1	Spring
12	H	C	0	0	0	8	8	7	2			1	Gasket
13	D	V	A	0	0	1	0	1	1	6		1	Cover
14	D	V	A	0	0	1	0	1	1	5		1	Screw
15				0	3	0	0	4	1	0		2	Brake Cover
16	D	V	D	0	0	0	9	8	2	0		1	Solenoid (230 Volt)
17	G	E	0	0	0	8	8	3	1	2	3	1	Solenoid (460 Volt)
	G	E	0	0	0	8	8	3	1	4	6	1	Solenoid (575 Volt)
	G	E	0	0	0	8	8	3	1	5	7	1	Solenoid Support
18	G	E	B	0	0	1	0	2	1	8		1	Screw
19				0	1	0	0	3	0	8		4	Lock Washer
20	C	M	0	0	0	2	8	4	0			4	Mounting Plate
21	D	V	A	0	0	0	9	6	5	2		1	Screw
22	B	K	A	0	0	1	0	4	9	3		1	Spacer
23	G	E	A	0	0	1	0	1	1	1		2	Washer
24	M	D	0	0	0	3	6	2	3			2	Nut
25	U	0	0	0	3	9	4	2				1	3/16 x 1" Spring Pin
26	6	S	0	0	0	9	8	6	2	1	6	1	Brake Link
27	S	B	A	0	0	0	9	6	5	4		1	Screw
28				0	1	0	0	6	1	0		2	Lock Washer
29	C	M	0	0	0	2	8	4	5			2	Washer
30	9			0	0	0	7	9	1	0		2	Retaining Ring
31	5	0		0	0	0	8	2	3	1	0	2	Screw
32				0	1	5	0	8	2	4		2	Lock Washer
33	M	D	0	0	0	3	2	2	7			2	Washer
34	B	K	0	0	1	0	4	3	8			2	Nut
35	D	V	0	0	1	0	6	8	0			2	

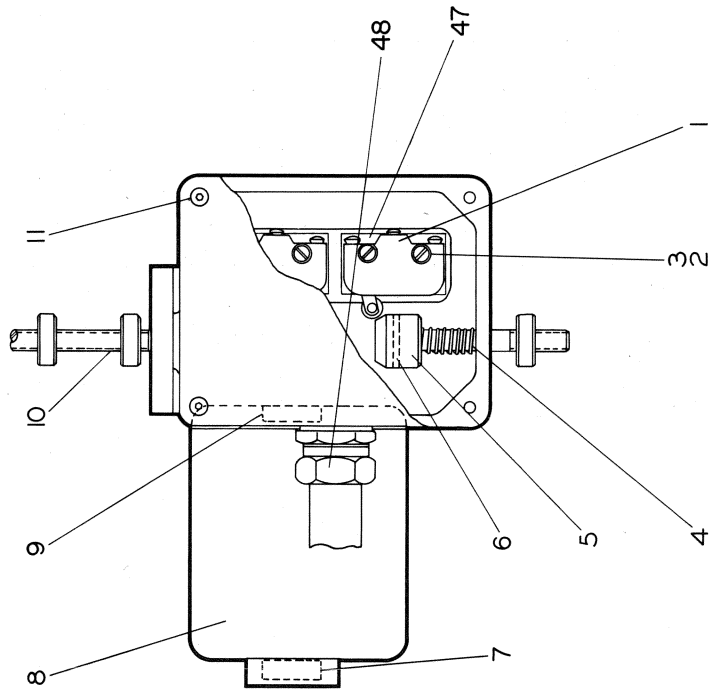
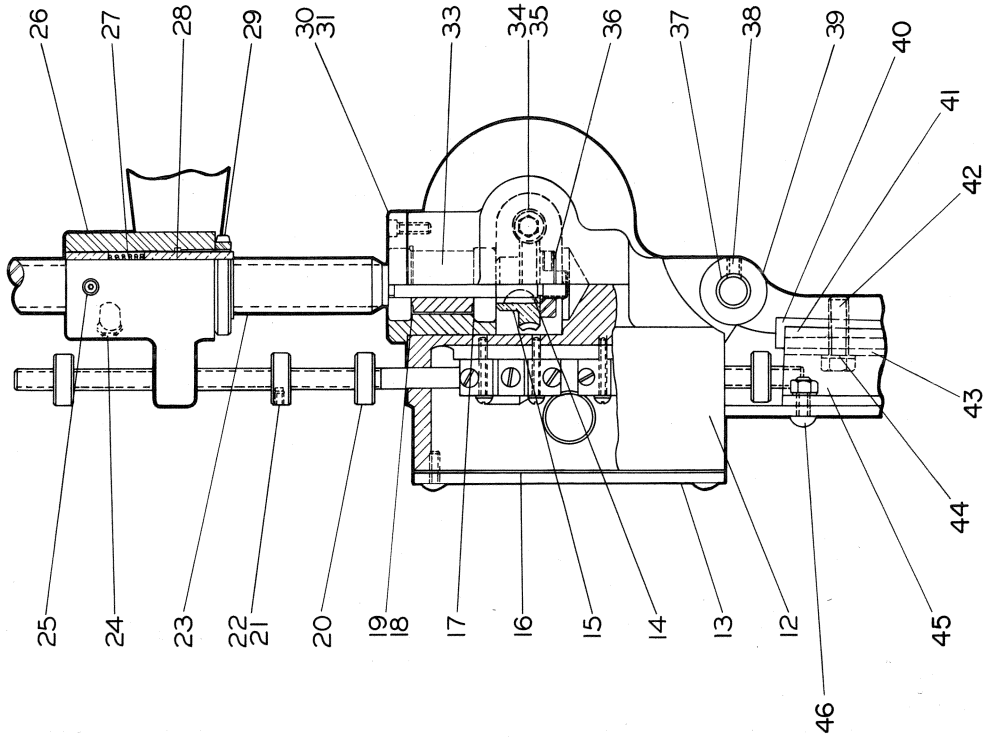
VARIABLE SPEED PULLEY ASSEMBLY



VARIABLE SPEED PULLEY ASSEMBLY

KEY	PART NUMBER										PCS	NAME	
	D	V	B										
1												1	Shaft
2	D	V	B	0	0	0	9	7	8	1		2	Nut
3	D	V	B	0	0	1	0	2	1	4		2	Outer Pulley
4	D	V	B	0	0	0	9	7	7	6		2	Screw
5	N	3	7	0	5	0	3	0	5			2	Plug
6	5	P		0	0	0	7	3	6			2	Lock Washer
7	5	P		0	0	0	6	4	3	4		2	Nut
8	Q	S		0	0	0	1	4	6	6		2	Pivot Screw
9	5			0	0	1	0	1	4	1		3	Shim
10	C	W		0	0	0	9	0	5	8		1	Bearing
11	1	6	5	0	0	0	8	2	3	1	0	3	Retaining Ring
12	5	P		0	0	0	6	4	3	4		2	Lock Washer
13	5			0	0	0	1	4	6	6		2	Nut
14	Q	S	A	0	0	1	0	1	4	1		2	Pivot Screw
15	Q	S	A	0	0	1	0	1	2	1		1	Support Bracket
16	D	V		0	0	1	0	5	3	7		1	Insulator
17	D	V		0	0	1	0	5	4	2		2	Rubber Washer
18	Q	S		0	0	1	0	1	4	3		2	Washer
19				0	1	5	1	0	2	0		2	Screw
20	D	V	A	0	0	1	0	5	3	6		1	Bushing
21	5	P		0	0	0	6	4	3	3		1	Washer
22				0	1	0	1	3	2	0		1	Screw
23				0	5	1	0	2	4			2	Screw
24	7			0	0	0	1	5	0	2		2	Nut
25	D	V		0	0	1	0	5	4	1		2	Bumper
26	D	V		0	0	1	0	5	6	7		2	Bushing
27	7			0	0	0	1	5	0	2		2	Nut
28				0	5	1	0	2	4			2	Screw
29	S	P		0	0	0	6	4	3	4		1	Lock Washer
30				0	1	0	1	3	1	6		1	Bolt
31	D	V	A	0	0	1	0	5	9	8		1	Pulley Hanger
32	C	H	A	0	0	1	0	1	8	0		1	Support For Drive
33	4	7		0	0	0	1	5	1	4		2	Key
34	V	D		0	0	1	0	5	1	5		1	Inner Pulley Assembly Consisting Of: Bushing Inner Pulley
	D	V	A	0	0	0	9	7	7	7			

VARIABLE SPEED ACTUATOR

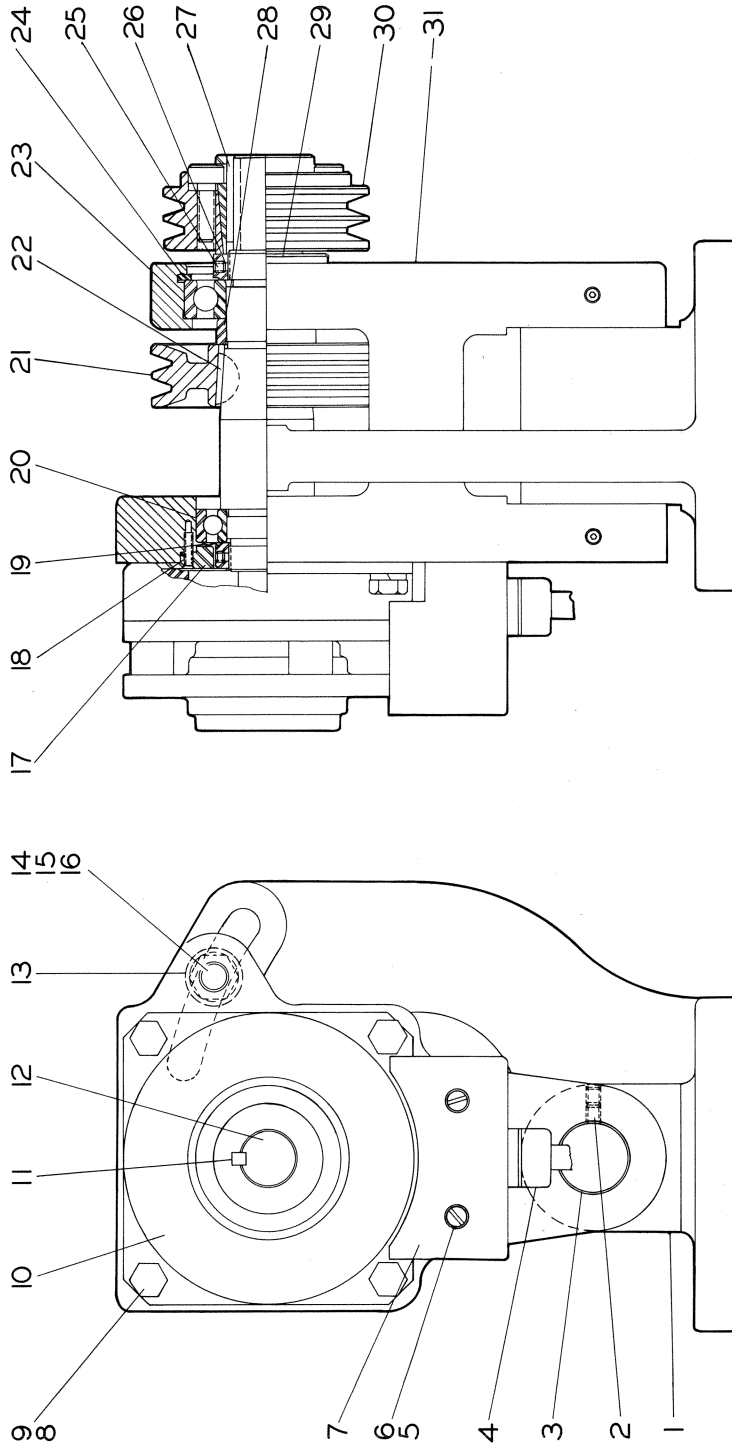


VARIABLE SPEED ACTUATOR

KEY	PART NUMBER						PCS	NAME
	D	V	B	L	S	T		
1	0	0	1	0	2	4	2	Limit Switch
2	0	3	5	0	1	6	2	Screw
3	0	0	0	8	1	3	4	Lock Washer
4	0	0	1	0	4	1	2	Spring
5	0	0	1	0	4	2	0	Switch Trip
6	0	0	0	9	8	6	2	Roll Pin
7	0	0	0	6	6	1	7	Motor Bearing (Rear)
8	2	2	D	3	7	6	1	Motor (220V-440V)
9	5	5	0	3	7	6	1	Motor (550V)
10	L	H	0	0	9	1	7	Motor Bearing (Front)
11	D	V	B	0	1	0	4	Trip Rod
12	D	V	E	0	1	0	1	Screw
13	D	V	A	0	1	0	1	Control Housing
14	5	0	0	0	1	4	6	Cover
15	D	V	C	0	1	0	2	Key
16	D	V	A	0	1	0	2	Worm Wheel
17	T	L	0	0	6	6	1	Gasket
18	T	L	0	0	6	4	8	Bearing
19	T	L	0	0	6	4	8	Shim Washer (.001)
20	D	V	0	0	1	0	4	Shim Washer (.002)
21	0	5	5	0	3	0	4	Trip Rod Stop
22	N	3	7	0	0	0	4	Lock Screw
23	D	V	E	0	1	0	1	Nylon Plug
24	D	V	0	0	1	0	3	Vertical Screw
25	V	S	0	0	1	0	3	Grease Fitting
26	D	V	B	0	1	0	2	Key
								Housing for Feed Screw Nut

KEY	PART NUMBER						PCS	NAME
	D	V	B	L	S	T		
27	0	0	1	0	3	1	1	Spring
28	0	0	0	1	8	1	0	Vertical Screw Nut
29	0	0	0	1	8	1	1	Lock Nut
30	D	V	B	0	1	0	1	Bearing Cup
31	0	1	0	0	3	0	8	Screw
33	V	S	C	0	0	1	7	Spacer
34	D	V	0	1	0	2	3	Motor Worm
35	D	V	0	0	1	0	4	Motor Shaft Nut
36	C	P	0	0	0	9	3	Bearing Nut
								Lock Screw
37	N	3	7	0	0	0	4	Nylon Plug
38	D	V	A	0	1	0	1	Swivel Pin
39	D	V	B	0	5	0	3	Screw
40	D	V	0	1	0	1	9	Support
41	D	V	0	1	0	5	3	Insulator
42	D	V	0	1	0	5	3	Bushing
43	D	V	0	1	5	1	0	Screw
44	M	D	0	0	3	5	9	Bumper
45	V	D	A	0	1	0	3	Lock Washer
46	C	M	0	0	0	2	8	Support
								Screw
47	5	P	0	0	2	8	4	Washer
48	7	5	0	0	1	1	8	Nut
								Insulator
								Connector

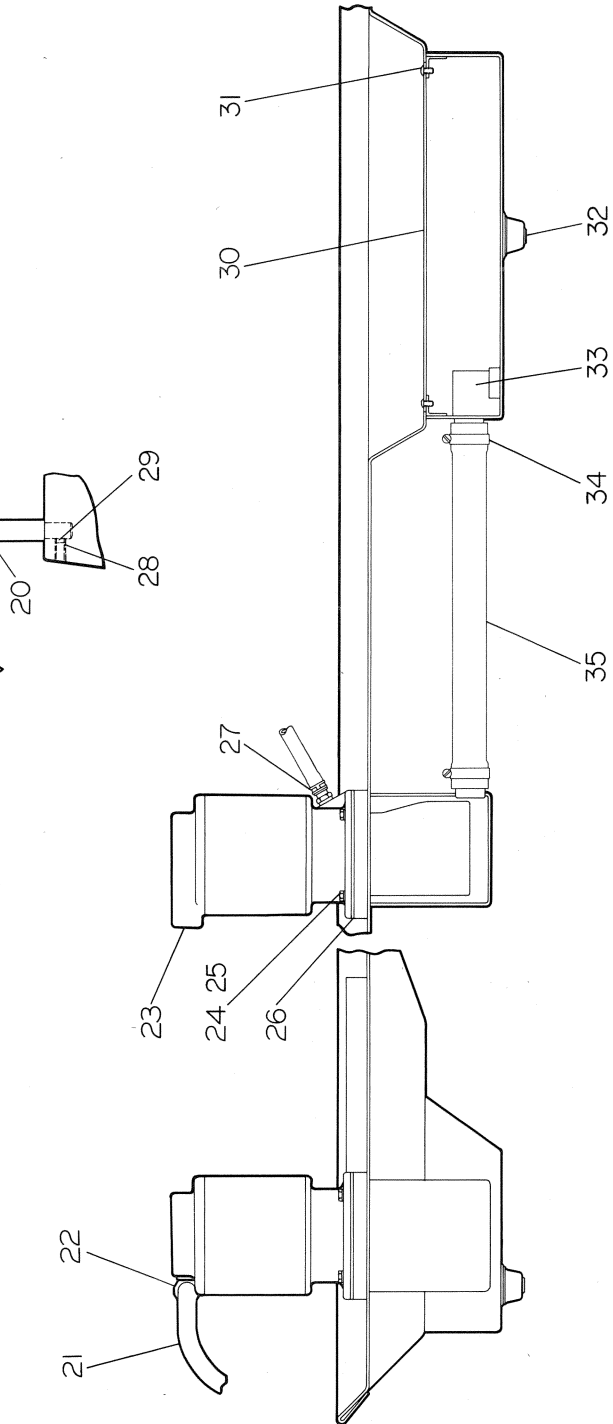
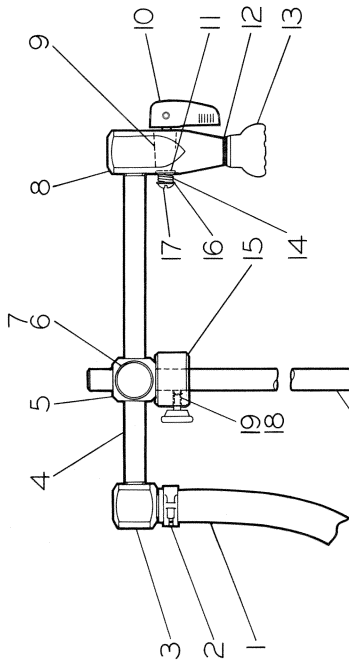
COUNTER SHAFT ASSEMBLY (DSM FIVE-NINE R AND VBS-R)



COUNTER SHAFT ASSEMBLY (DSM FIVE-NINE R AND VBS-R)

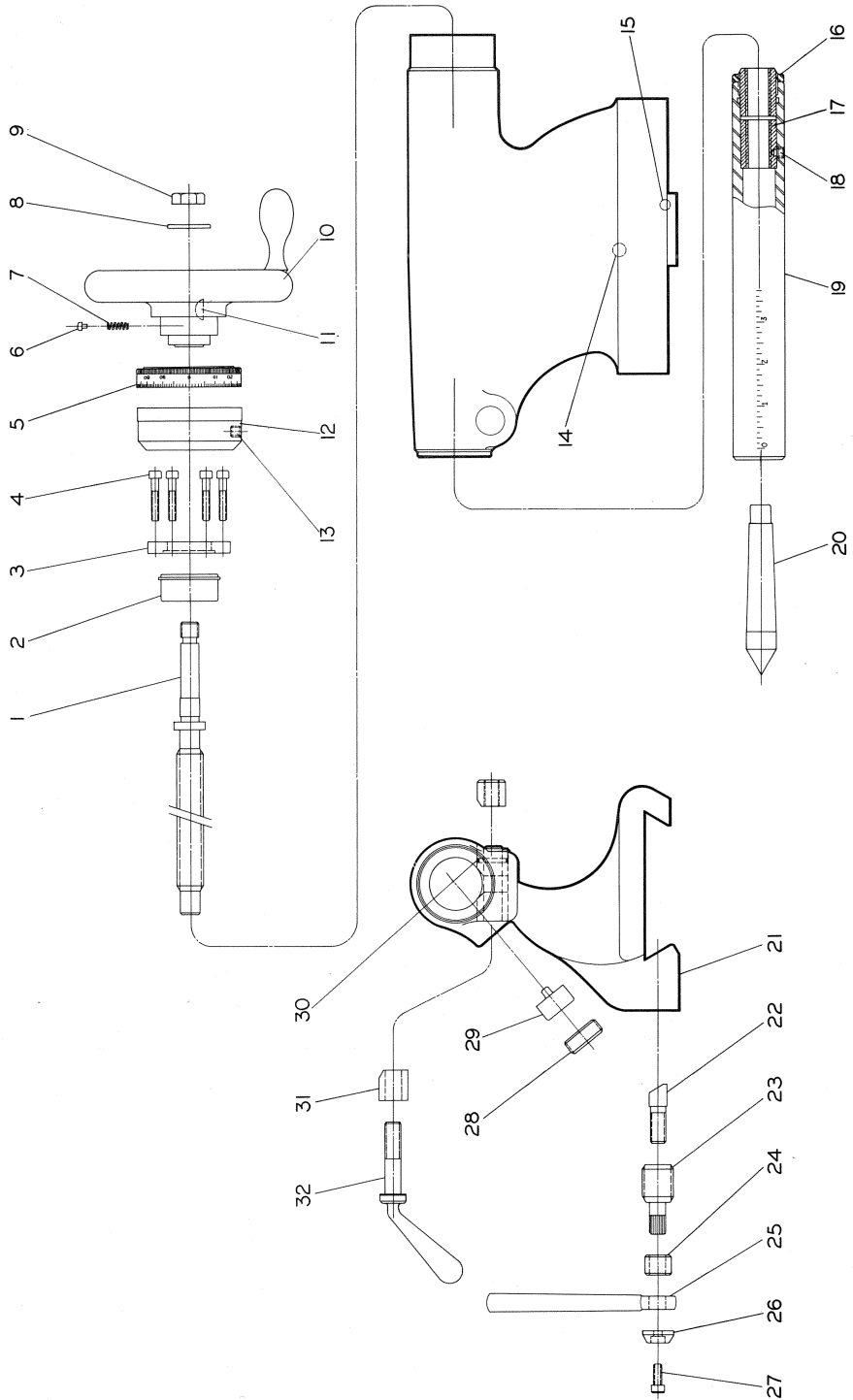
KEY	PART NUMBER										PCS	NAME
	V	Q	C	M	V	M	V	Q	C	Q		
1	0	0	1	0	5	1	9				1	Lock Support
2	0	5	0	5	0	5					4	Screw
3	0	0	1	1	1	4	3				1	Pin
4	0	0	0	9	2	0	7				1	Cord Connector
5	0	0	0	2	8	4	0				2	Lock Washer
6	0	3	5	0	3	0	6				2	Screw
7	V	Q	0	0	1	0	4	7	5		1	Cable Support
8	M	D	0	0	0	3	5	9	1		4	Lock Washer
9			0	1	5	1	0	1	2		4	Bolt
10	V	Q	0	0	1	0	4	6	2		1	Electric Brake
11	Q	C	0	0	0	7	5	3	4		1	Key
12	Q	C	0	0	0	3	2	1	8		1	Shaft
13	Q	C	0	0	1	0	4	8	1		1	Spacer
14	6		0	0	0	9	8	9	6		1	1/32" Spacer (If Necessary)
15	3	7	0	0	0	6	2	2			1	Washer
16	5	P	0	0	0	6	4	3	4		1	Lock Washer
17	V	Q	0	1	5	1	4	3	6		1	Bolt
18			0	0	0	8	3	4	6		1	Retaining Ring
19	V	H	0	3	1	0	1	0	8		2	Screw
20	Q	C	0	0	0	9	9	1	2		1	Wave Washer
21	Q	C	0	0	0	6	5	2	0		1	Bearing
22	5		0	0	0	3	2	0	7		1	Fixed Pulley (60Hz Machines Only)
23	Q	C	0	0	0	3	2	0	7	0	5	Fixed Pulley (50 Hz Machines Only)
24	2	8	0	0	0	1	4	7	9		1	Key
25	N	3	0	0	0	8	2	3	1	0	5	Bearing
26	Q	C	0	0	0	7	3	6			1	Retaining Ring
27	Q	C	0	5	0	3	0	3			2	Screw
28	Q	C	0	0	0	7	5	3	3		2	Nylon
29	Q	C	0	0	0	7	5	3	3		1	Key
30	Q	C	0	0	1	0	4	8	1	0	1	Spacer
31	V	Q	0	0	1	0	4	8	0	0	5	Bearing Nut
			0	0	1	0	4	8	0	0	5	Pulley
			0	0	1	0	4	6	7		1	Support

COOLANT FACILITIES



KEY	PART NUMBER										PCS	NAME	
1	2	0										1	Hose
2	L	H	A		0	0	6	9	6	5		1	Hose Clamp
3	O	F	A		0	0	6	9	6	6		1	Hose Clamp
4	O	F	L		0	0	0	9	2	8		1	Elbow
5	O	F	A		0	0	0	9	2	9		1	Support For Elbow
6	F	B			0	0	0	6	9	1		2	Slide Connector
7	U	A			0	0	0	8	7	1		2	Brass Plug
8	O	F	A		0	0	0	9	4	6		1	Thumb Screw
9	O	F			0	0	1	0	0	5		1	Valve Body
10	O	F			0	0	1	0	0	6		1	Valve Insert
11	O	F			0	0	1	0	0	6		1	Lever
12	O	F	A		0	0	0	9	4	3		1	Washer
13	O	F	B		0	0	0	9	4	6		1	O-Ring
14	O	F			0	0	1	0	0	5		1	Oil Nozzle
15	O	F			0	0	1	0	4	1		1	Spring
16	C	P			0	0	0	1	0	6		1	Support For Connector
17					0	3	5	0	3	0		1	Washer
18	U				0	0	0	4	9	0		1	Screw
19	O	R			0	0	0	9	4	7		1	Brass Plug
20	O	F			0	0	0	9	2	6		1	Thumb Screw
21	5	0			0	0	1	0	2	2		1	Upright For Rod
22	5	0			0	0	1	0	2	2		1	Conduit
23	L	H			0	0	0	3	2	5		1	Connector
24	L	H			0	0	0	3	2	5		1	Pump (208 - 400V.)
25					0	1	5	0	5	1		4	Pump (550V.)
26	C	M			0	0	1	5	0	5		4	Screw
27	R	A			0	0	0	2	8	4		4	Lock Washer
28	R	A			0	0	0	8	2	6		1	Gasket
29	L	H			0	0	0	8	3	8		1	Hose Connector
30	U				0	0	0	6	9	6		1	Hose Clamp
31	V	D			0	5	0	5	0	7		1	Screw
32	V	D			0	0	0	4	9	0		1	Brass Plug
33	V	D			0	0	0	8	6	8		1	Cover (With Coolant)
34	M	D			0	0	1	1	0	4		1	Cover (Without Coolant)
35	L	H			0	3	0	0	5	0		4	Screw
	L	H			0	0	0	3	4	8		1	Drain Plug
	L	H			0	0	0	3	1	3		1	Screen
	L	H			0	0	0	6	9	6		2	Hose Clamp
	V	D			0	0	0	8	2	2		1	Hose

TAILSTOCK

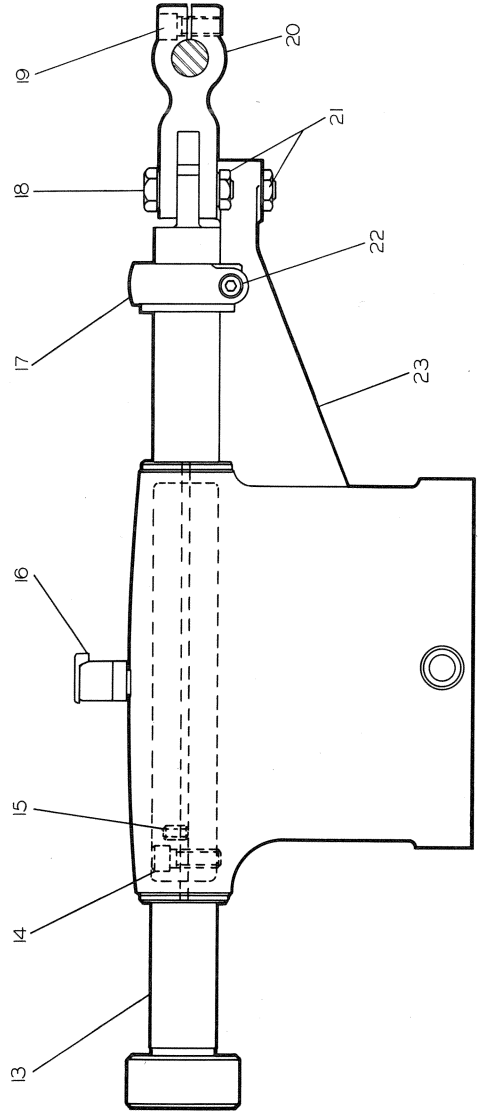
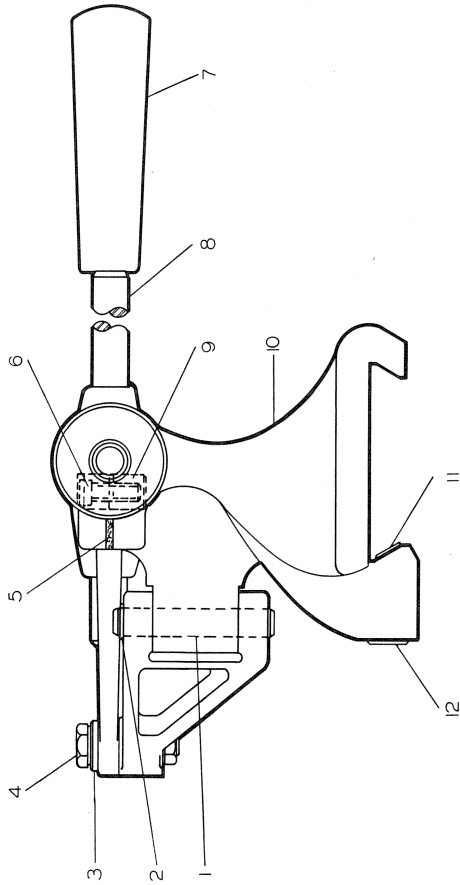


KEY	PART NUMBER	PCS	NAME
18	V D	1	Screw
19	V D	1	Spindle
20	2 M A	1	Spindle (Metric)
21	V D A	1	Center
22	H L	1	Tailstock Body
23	H L	1	Locking Plug
24	H L	1	Clamp Bolt
25	H L	1	Spacer
26	H L	1	Handle
27	H L	1	Washer
28	L H	1	Screw
*29	L H	1	Screw
30	O R	1	Spindle Key
31	V D	1	O-Ring
32	R	1	Binding Nut
	T L	1	Handle
	T L	1	Binding Nut Shim (.044)
	T L	1	Binding Nut Shim (.050)
	T L	1	Binding Nut Shim (.056)
	T L	1	Binding Nut Shim (.070)

* Spindle keys are custom fitted to each machine. Please call Hardinge sales office before ordering.

KEY	PART NUMBER	PCS	NAME
1	V D	1	Feed Screw
2	V D	1	Feed Screw (Metric)
3	V D	1	Bearing
4	V D	1	Bearing Retainer
5	H L	6	Screw
6	R	1	Dial Assembly
7	H L	1	Dial Assembly (Metric)
8	H L	1	Plug
9	H L	1	Spring
10	V D	1	Washer
	V D	1	Handwheel Nut
	V D	1	Handwheel Assembly
	T L	1	Consisting Of:
	V D	1	Handle
	V D	1	Handwheel
11	3	1	Key
12	V D	1	Zero Ring
13	C D	1	Screw
14	C D	1	Stop Pin
15	C D	1	Stop Pin
16	V D	1	Lock Pin
17	L H	1	Feed Screw Nut
	L H	1	Feed Screw Nut (Metric)

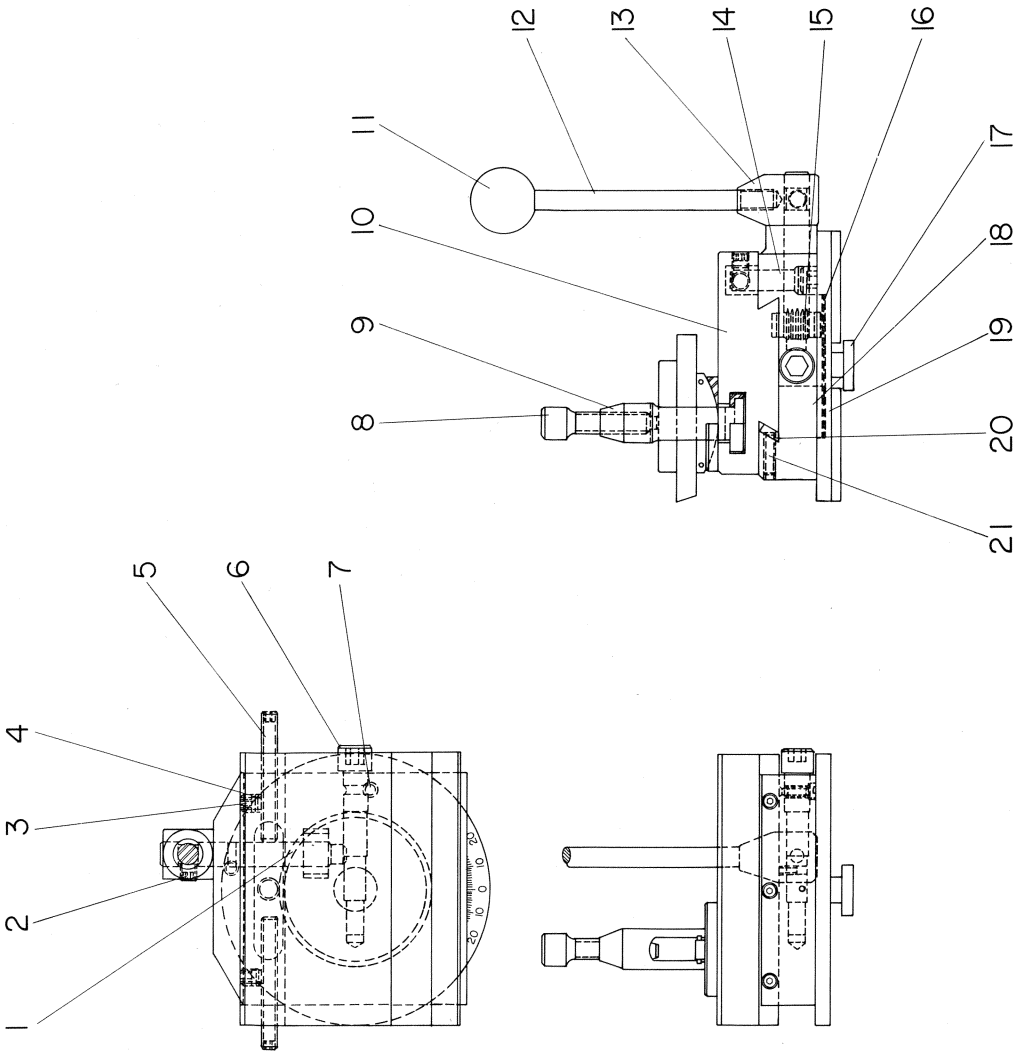
END-WORKING SLIDE



KEY	PART NUMBER						PCS	NAME				
1	6	0	0	8	0	1	9	Link Pin				
2	3	7	0	0	7	9	1	Retaining Ring				
3	3	7	0	0	0	6	4	1	Washer			
4	6	A	0	0	0	8	4	4	3	Swivel Bolt		
5	6		0	0	0	9	6	9	6	Felt		
6			0	1	0	0	7	1	2	Screw		
7	7	9	A	0	0	0	8	6	7	2	Handle	
† 8	7	9	A	0	0	0	6	5	1	0	1	Operating Lever
9	6	B	0	0	0	8	6	4	2	1	1	Binding Nut
*10	6	9	C	0	0	0	7	2	2	0	1	Tailstock Body
11	6		0	0	0	9	0	9	4	1	1	Locking Plug
12	6		0	0	0	9	0	9	5	1	1	Locking Screw
13	6	C	0	0	0	7	4	1			1	Spindle
*14			0	1	0	0	7	1	2	3	6	Screw
*15			0	5	0	5	1	0			3	Stop Screw
16	6		0	0	0	9	6	9	5	1	1	Oil Cup
17	6		0	0	0	8	4	4	0		1	Stop Bracket
18	6	B	0	0	0	8	6	6	7	1	1	Swivel Bolt
19			0	1	0	0	7	1	2	3	6	Screw
20	6	B	0	0	0	7	2	6			1	Lever Anchor Block
21	U		0	0	0	4	1	4	1		2	Nut
22			0	1	0	0	6	2	0		1	Screw
23	6		0	0	0	7	2	9			1	Connecting Link

* These parts constitute Tailstock Body Assembly, 69C-0000722.
 † These parts constitute Operating Lever Assembly, 79A-0000651.

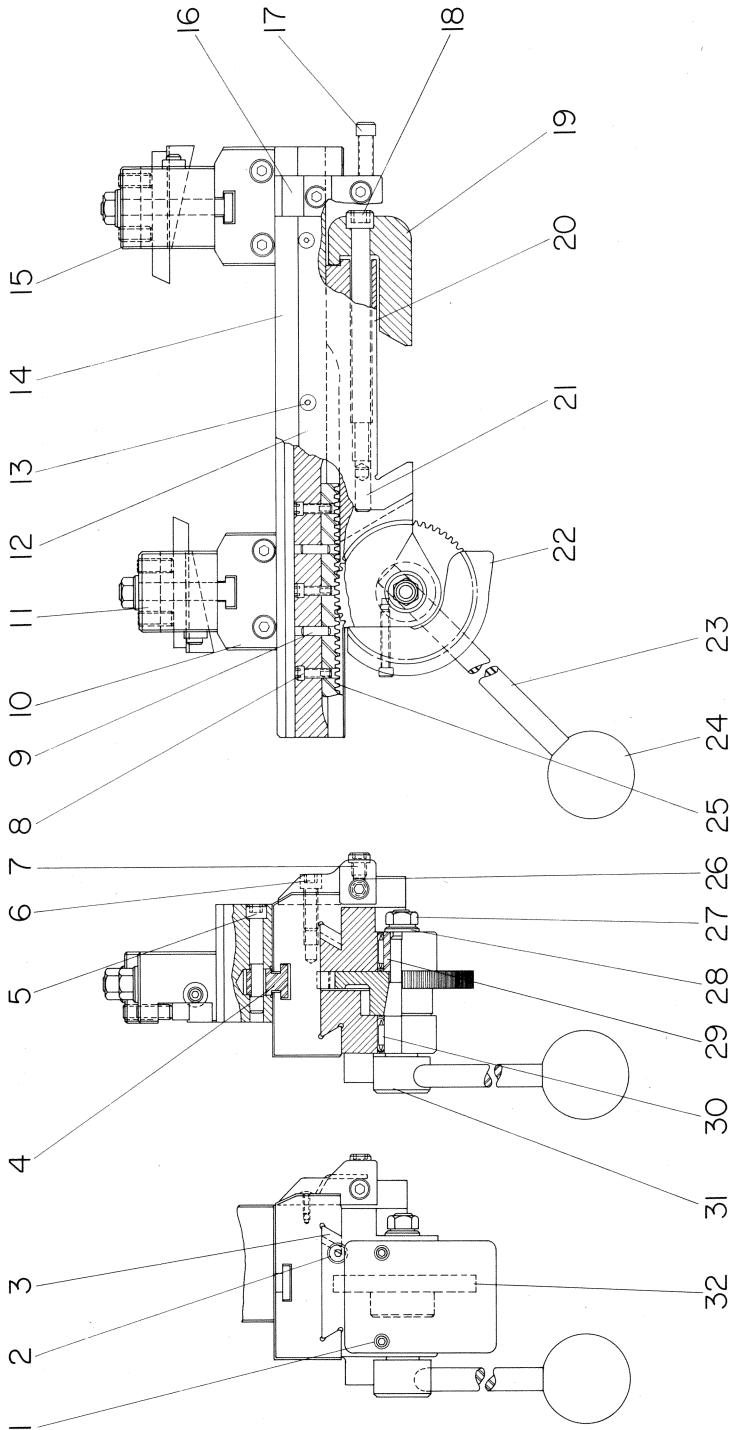
STRAIGHT AND TAPER TURNING ATTACHMENT



STRAIGHT AND TAPER TURNING ATTACHMENT

KEY	PART NUMBER										PCS	NAME
	6	A										
1											1	Gear Shaft
2											1	Screw
3											2	Screw
4	U										2	Plug
5											2	Screw
6											1	Eccentric
7											2	Retaining Screw
8											1	Screw
9	F	F	B								1	Tool Post Assembly Consisting Of:
											1	Tool Post Screw
											1	Tool Post
											1	Rocker
											1	Ring
											1	T-Nut
											1	Groove Pin
10											1	Slide
11	T	L									1	Ball
12											1	Handle
13											1	Hub
14											1	Stop Pin
15											1	Gear
16											—	.001" Shim — Used As Necessary
											—	.002" Shim — Used As Necessary
											—	.005" Shim — Used As Necessary
											—	.010" Shim — Used As Necessary
17											1	Draw Bolt
18											1	Index Base
19											1	Base
20											1	Gib
21	N										3	Gib Screw

DOUBLE TOOL CROSS SLIDE

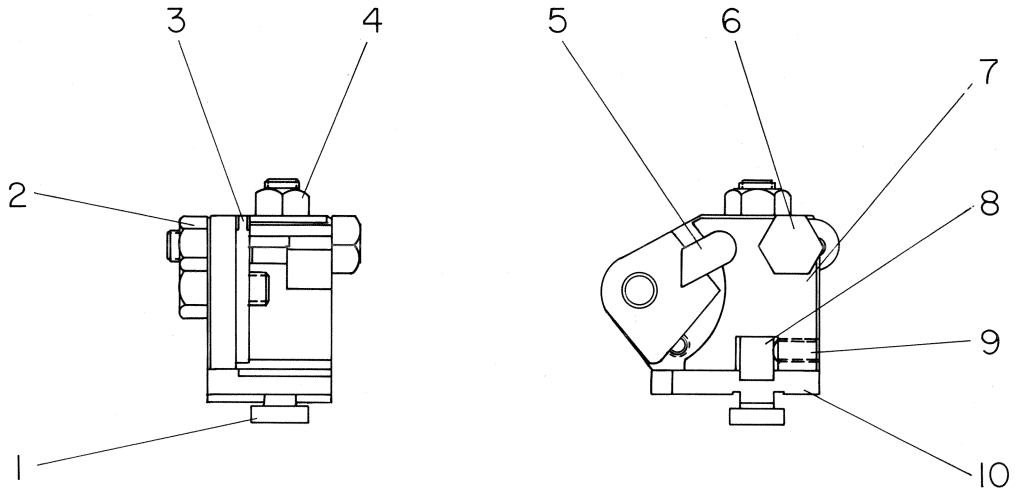


DOUBLE TOOL CROSS SLIDE

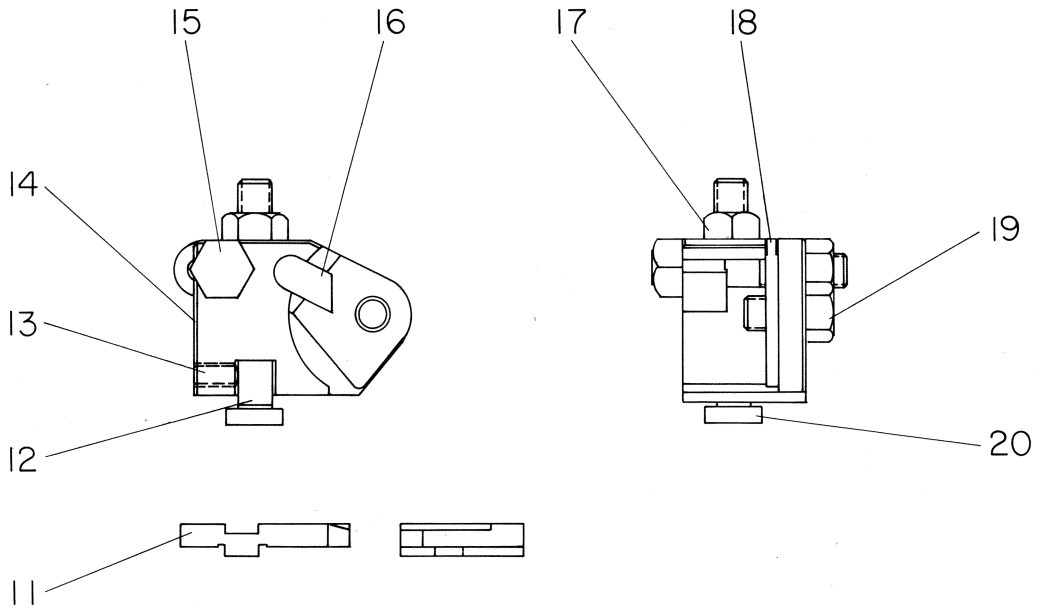
KEY	PART NUMBER										NAME	PCS	NAME			
1	0	1	0	0	4	2	0	Screw For Gear Guard	2	Screw For Gear Guard	2	19	Clamp	1		
2	6	9	0	0	6	1	6	0	Gib Screws	2	6 9	*20	Double Tool Cross Slide Base	1		
3	F	D	0	0	0	4	5	3	Gib	1	F D		Stop Plug For Adjusting Screw	2		
*4	3	7	0	0	0	4	6	5	Clamp Bolt For Block	4	3 7		Gear Guard	1		
*5	F	B	0	0	0	4	6	6	Lock Bolt Eccentric	4	F B		Lever Arm	1		
6	0	1	0	0	8	1	4	Screw For Stop Block	2			**23	Ball For Handle	1		
7	0	1	0	0	7	0	6	Screw	1			**24	Rack	1		
8	0	1	0	0	3	0	8	Screw	3			†25	Lock Plug	1		
9	T	L	0	0	6	7	0	Dowel For Rack	2	T L		□26	Nut For Lock Bolt	1		
*10	F	C	0	0	0	4	6	3	Block For Tool Post	2	F C		27	Washer For Lock Bolt	1	
†11	F	F	A	0	0	0	4	7	4	Front Tool Block Assembly	1	F F A		28	Lever Shaft Bushing	1
12	6	9	B	0	0	0	9	1	7	Cover For Stop Screws	1	6 9 B		**29	Needle Bearing	2
13	0	3	0	0	2	0	6	Screw For Stop Cover	3			30	Lever Shaft	1		
†14	F	D	0	0	0	4	5	0	1	Top Slide	1	F D		31	Gear	1
†15	F	R	A	0	0	0	4	7	4	Rear Tool Block Assembly	1	F R A		32		
□16	F	D	A	0	0	0	4	5	6	Stop Bracket	1	F D A				
□17	F	B	0	0	0	4	5	8	Adjusting Screw	1	F B					
18	6	9	0	0	0	7	3	7	3	Screw For Clamp	1	6 9				

* Parts found on Double Tool Cross Slide Base Assembly, 69F-0000451.
† Parts found on Top Slide Assembly for D.T.C.S., FDD-0000455.
** Parts found on Lever Assembly, FC-0000470.
‡ These Assemblies found on page 00.
□ Parts found on Stop Adjusting Screw Assembly, FD-0006943.
• Parts found on Base Assembly For Tool Block, FA-0008839.

FRONT AND REAR #00 TOOL HOLDER ASSEMBLIES



FRONT TOOL HOLDER

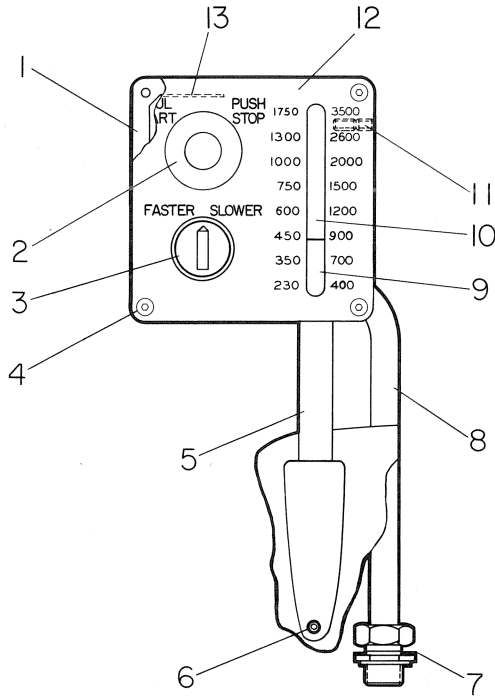


REAR TOOL HOLDER

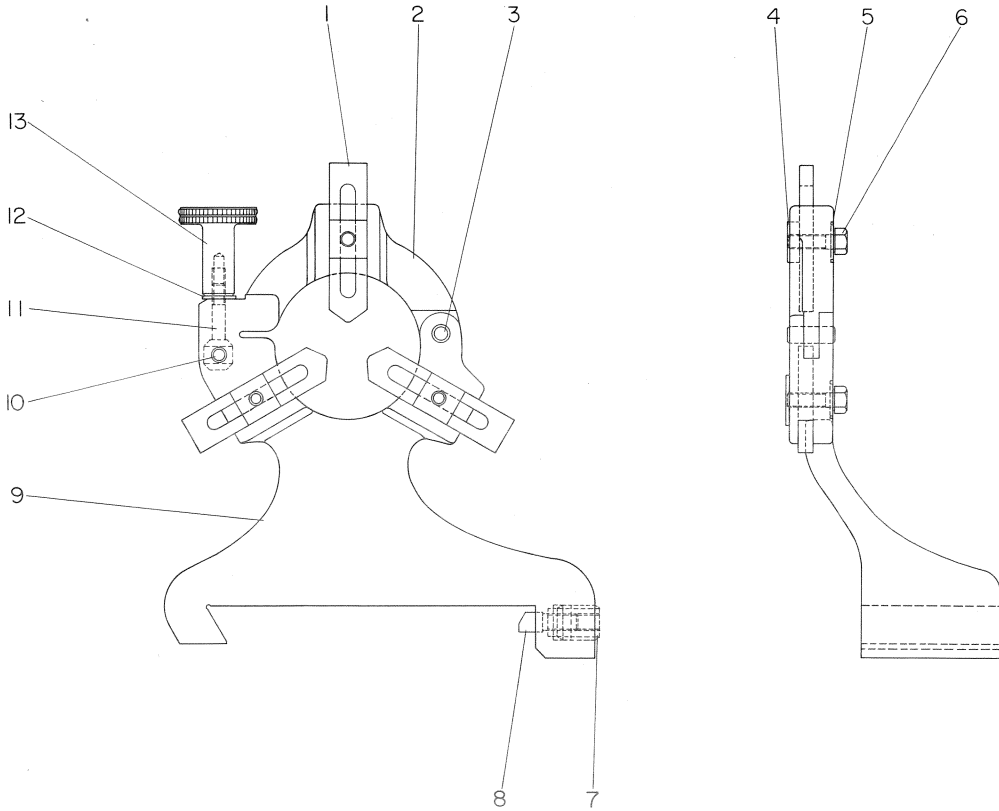
FRONT AND REAR #00 TOOL HOLDER ASSEMBLIES

KEY	PART NUMBER								PCS	NAME	
1	O	O	0	0	0	7	9	4	9	1	T-Bolt
2	O	O	0	0	0	7	9	4	8	1	Tool Bolt
3	O	O	0	0	0	7	9	5	0	1	Adjusting Plate
4	B	7	0	0	0	1	5	0	2	2	Nut
5	O	O	0	0	0	7	9	6	0	1	Front Lock Bolt (1-11/16")
	O	O	0	0	0	7	9	6	1	1	Front Lock Bolt (1-15/16")
	O	O	0	0	0	7	9	6	2	1	Front Lock Bolt (2-3/16")
6	O	O	0	0	0	7	9	5	1	1	Eccentric Bolt
7	O	O	0	0	0	7	9	4	7	1	Tool Holder Block (Front)
8	O	O	0	0	0	7	9	5	2	1	Key
9			0	5	6	0	5	0	6	2	Screw
10	O	O	0	0	0	7	9	5	5	1	Sub Base (Front)
11	O	O	0	0	0	7	9	5	4	1	Riser Block (Optional)
12	O	O	0	0	0	7	9	5	2	1	Key
13			0	5	6	0	5	0	6	2	Screw
14	O	O	0	0	0	7	9	4	5	1	Tool Holder Block (Rear)
15	O	O	0	0	0	7	9	5	1	1	Eccentric Bolt
16	O	O	0	0	0	7	9	5	3	1	Rear Lock Bolt (1-11/16")
	O	O	0	0	0	7	9	5	8	1	Rear Lock Bolt (1-15/16")
	O	O	0	0	0	7	9	5	9	1	Rear Lock Bolt 2-3/8"
17	B	7	0	0	0	1	5	0	2	2	Nut
18	O	O	0	0	0	7	9	5	0	1	Adjusting Plate
19	O	O	0	0	0	7	9	4	8	1	Tool Bolt
20	O	O	0	0	0	7	9	4	9	1	T-Bolt

VARIABLE SPEED CONTROL BOX

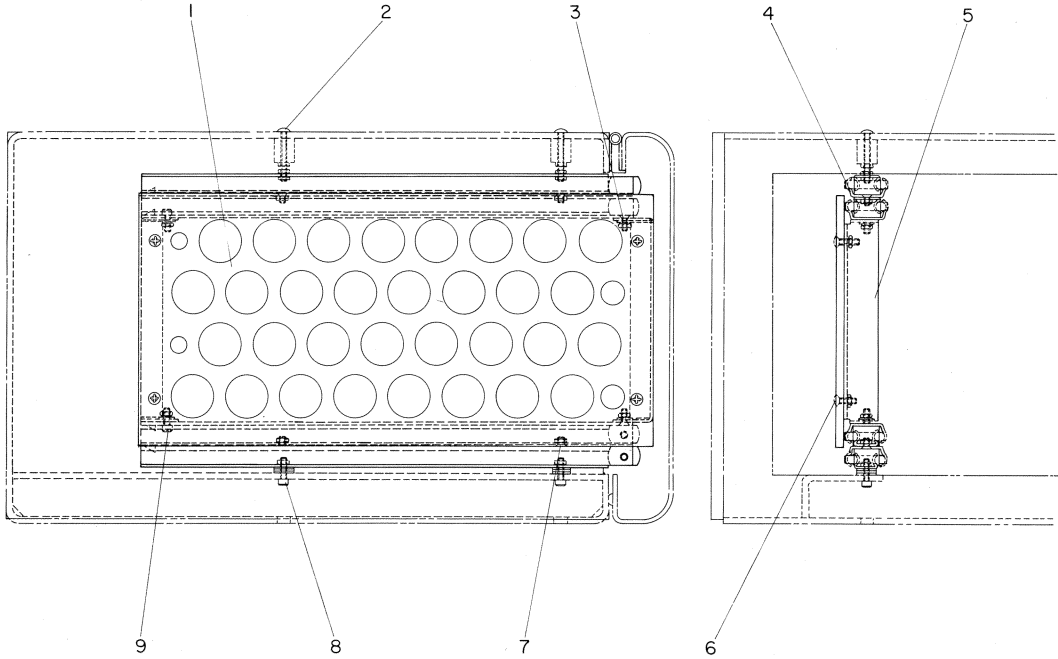


KEY	PART NUMBER										PCS	NAME	
1	V	D	0	0	1	0	1	8	1			1	Box
2	L	M	0	0	0	3	6	5	0			1	Push-Pull Switch
3	A	H	0	0	0	9	9	7	2	0	5	1	Selector Switch
4			0	3	0	0	3	0	6			4	Screw
5	V	D	0	0	1	0	1	9	0			1	Support
6			0	5	5	0	5	0	4			2	Set Screw
7	5	0	0	0	1	0	2	2	5			2	Connector
8	5	0	0	0	1	0	2	2	9			—	Conduit
9	D	V	0	0	1	0	1	8	5			1	Indicator Plate
10	V	D	0	0	1	0	1	8	9			1	Window
11			0	5	5	0	6	0	8			2	Screw (1/2" Long)
			0	5	5	0	6	0	6			2	Screw (3/8" Long)
12	V	D	0	0	1	0	1	8	8			1	Plate (1750-3500)
	V	D	0	0	1	0	1	8	8	0	1	1	Plate (1330-4000)
	V	D	0	0	1	0	1	8	8	0	2	1	Plate (1160-3500)
13	V	D	0	0	1	1	0	6	3	0	1	1	Insulator



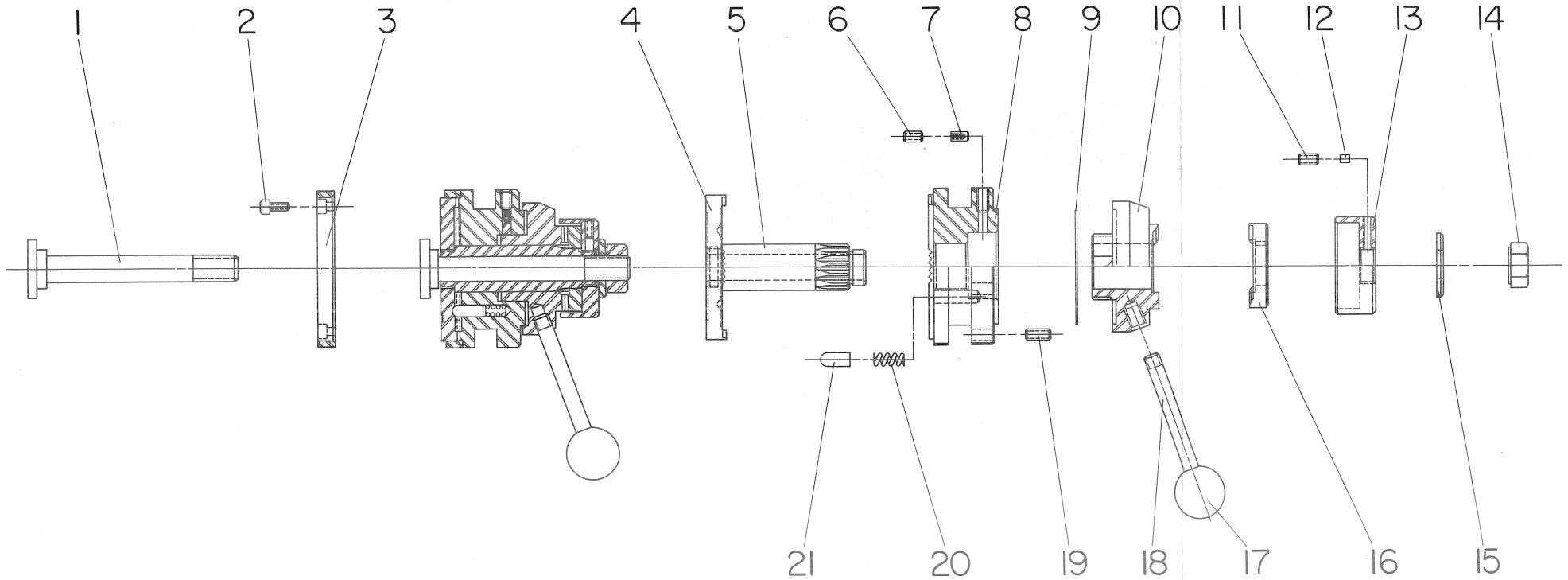
KEY	PART NUMBER								PCS	NAME	
	D	V		0	0	0	0	0	1	1	Hinged Steady Rest
1	3	7	A	0	0	0	0	6	7	0	Jaw
2	6			0	0	0	8	7	4	4	Hinged Section
3	T	L		0	0	0	6	5	3	7	Hinge Pin For Frame
4	4	9		0	0	0	7	9	4	6	Nut For Jaw Bolt
5	3	7		0	0	0	0	6	7	2	Washer For Lock Bolt
6	V	D		0	0	1	1	9	0	3	Hex Head Bolt
7	7	9		0	0	0	9	0	9	5	Locking Screw
8	H	L		0	0	0	9	0	9	4	Locking Plug
9	D	V		0	0	0	0	6	6	6	Frame
10	T	L		0	0	0	6	7	0	9	Hinge Pin For Lock Bolt
11	6			0	0	0	8	7	7	1	Lock Bolt
12	3	7		0	0	0	0	6	7	2	Washer
13	D	V		0	0	1	0	4	6	8	Hinge Lock Handle

COLLET BOARD ASSEMBLY



KEY	PART NUMBER								PCS	NAME	
1	6	A	0	0	0	2	1	7	2	1	Collet Board
2			0	3	7	0	4	2	4	2	Screw
	H	L	A	0	0	1	0	0	7	2	Spacer
	5	P		0	0	0	6	4	4	4	Hex Nut
	6			0	0	0	8	7	4	2	Square Nut
3				0	4	5	0	4	0	2	Screw
	C	M		0	0	0	2	8	4	2	Lock Washer
	M	D		0	0	0	3	6	2	B	Washer
	5	P	A	0	0	0	6	4	4	2	Hex Nut
4	R	6		0	0	0	8	7	1	4	Drawer Slide
5	6			0	0	0	8	7	2	2	Bracket
6				0	4	0	0	4	1	B	Screw
	C	M		0	0	0	2	8	4	4	Lock Washer
	5	P		0	0	0	6	4	4	4	Hex Nut
7				0	4	5	0	4	0	4	Screw
	6			0	0	0	8	7	4	4	Square Nut
8				0	1	0	0	4	1	2	Screw
	5	P		0	0	0	6	4	3	6	Washer
	6			0	0	0	8	7	4	2	Square Nut
9				0	1	0	0	4	0	2	Screw
	M	D		0	0	0	3	6	2	B	Washer
	C	M		0	0	0	2	8	4	2	Lock Washer
	5	P		0	0	0	6	4	4	2	Hex Nut

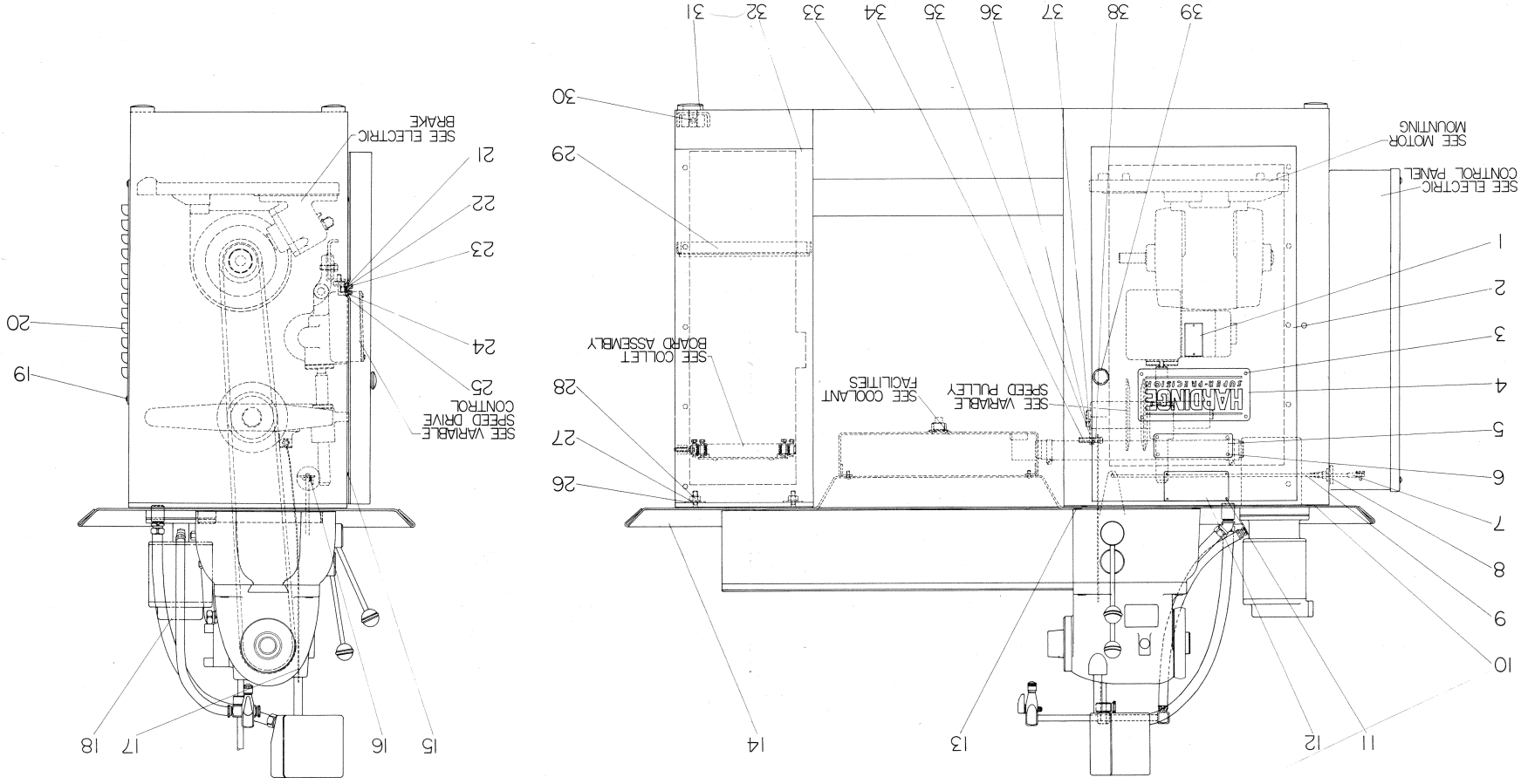
FOUR-STATION TURRET ASSEMBLY (SQUARE SHANK TOOLING)



KEY	PART NUMBER										PCS	NAME		
1	A	T	A	0	0	0	7	2	0	0	0	1	1	Square Turret Assembly
	A	T		0	0	0	0	4	6	1			1	Draw Bolt
2				0	1	0	0	2	0	6			4	Screw
3	A	T		0	0	0	9	8	1	3			1	Cover
	A	T	A	0	0	0	7	2	0	2	0	1	1	Turret Post and Base Assembly (Consists of Key #4 & 5)
4	A	T	A	0	0	0	7	2	0	2	1	A	1	Turret Base
5	A	T		0	0	0	6	6	5	5			1	Post for Turret
6	N			0	5	5	0	5	0	6			1	Screw
7	A	T		0	0	0	7	2	0	8			1	Plunger
	6			0	0	0	9	8	5	9			1	Spring
8	A	T		0	0	0	7	2	0	1			1	Turret Body

KEY	PART NUMBER										PCS	NAME		
9	A	T		0	0	0	9	7	4	5			1	Ring
10	A	T	A	0	0	0	1	1	2	5	0		1	Handle Support
11	A	T		0	5	5	0	3	0	6			1	Screw
12	4	7		0	0	0	0	4	8	3			1	Brass Plug
13	A	T	A	0	0	1	0	4	1	3			1	Cover
14	5	P	A	0	0	0	1	9	5	7			1	Nut
15	M	D		0	0	0	3	2	4	8			1	Washer
16	A	T		0	0	1	0	3	1	2			1	Face Cam for Turret
17	T	L		0	0	0	6	1	2	6			1	Knob
18	L	H		0	0	0	6	1	5	8			1	Handle
19				0	5	5	0	5	0	8			12	Screw
20	H	C	T	0	0	0	7	3	3	5			4	Spring
21	A	T		0	0	0	0	3	4	5			4	Plunger

PEDESTAL ASSEMBLY (DV FIVE-NINE, DSM FIVE-NINE, AND VBS)

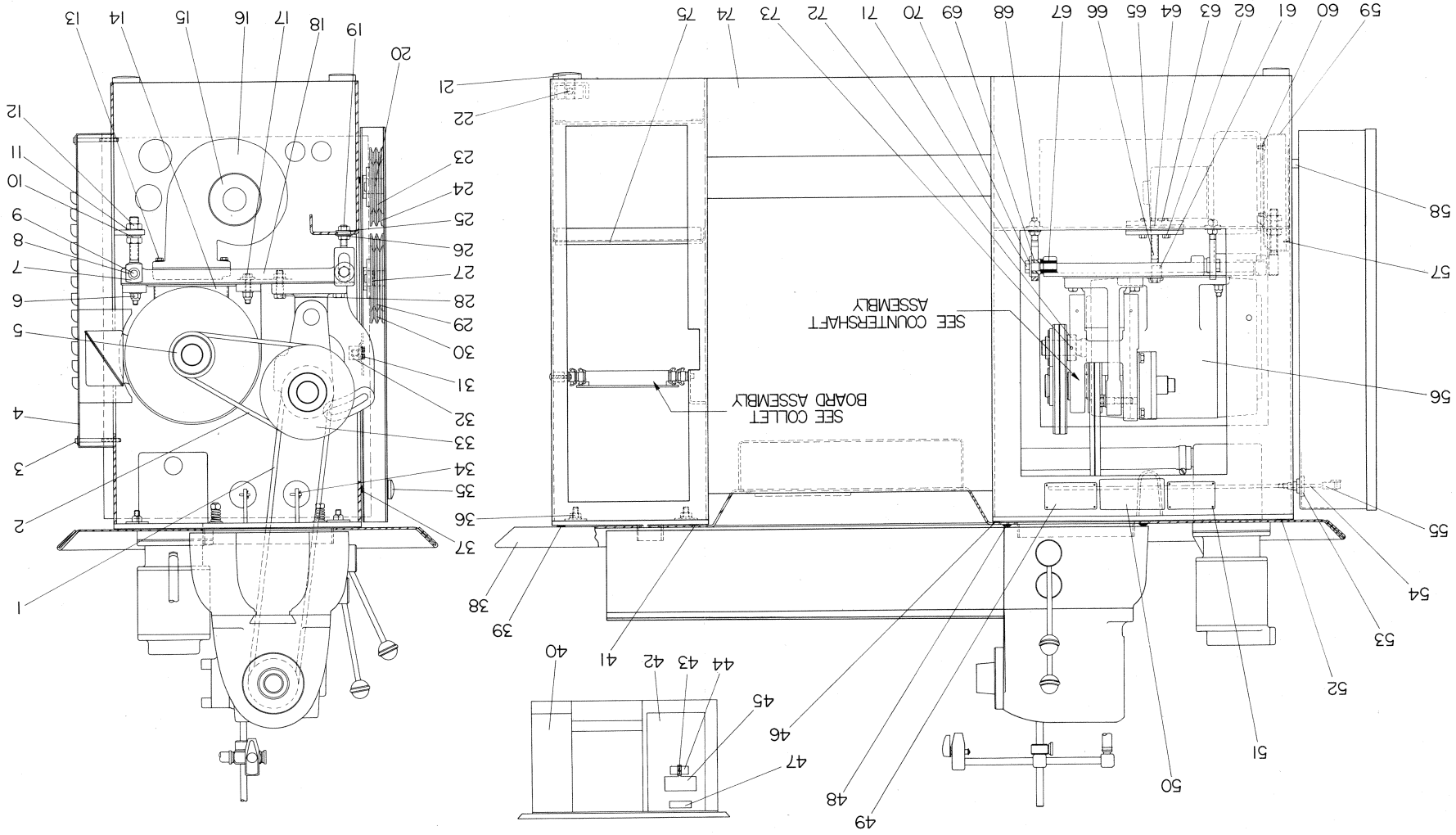


PEDESTAL ASSEMBLY (DV FIVE-NINE, DSM FIVE-NINE, AND VBS)

KEY	PART NUMBER							PCS	NAME				
1	K	H	0	0	1	0	3	6	6	E	1	Warning Tag — For European Machines Only	
	R		0	0	0	8	0	4	4		2	Escutcheon Pin — For European Machines Only	
2	V	D	A	0	0	0	3	7	8	0	1	Door	
3			0	6	5	0	1	0	4		4	Screw	
4	F	P	C	0	0	0	4	6	9	8	1	Nameplate	
5	L	H		0	0	0	4	6	9	8	C	Nameplate — For Canadian Machines Only	
6			0	6	5	0	1	0	4		4	Screw — For Canadian Machines Only	
7	W	E		0	0	0	2	8	5	0	2	Link	
8	K	L		0	0	0	9	9	7	4	2	Rubber Boot	
	1	2	5	0	0	0	8	2	3	1	0	1	Retaining Ring
9	V	D		0	0	0	3	2	8	8	2	Pull Rod	
10	V	D		0	0	0	4	9	1	1	7	Cork Pad	
11	R			0	0	0	8	0	4	4	4	Escutcheon Pin	
12	H	P	E	0	0	0	9	8	5	8	1	Brake Adjusting Plate	
13	V	D		0	0	1	0	5	6	5	0	1	Bed Seal And Insert Assembly
	V	D		0	0	1	0	5	6	5	1	Seal	
	V	D		0	0	1	1	1	4	0	0	1	Insert
	V	D		0	0	1	1	1	4	0	0	2	Insert
14	V	D	A	0	0	0	3	3	1	5	1	Oil Pan	
15	U			0	0	0	6	9	1	6	5	Rubber Plug	
16	U	E		0	0	0	4	9	2	0	2	Cotter Pin	
17	D	V		0	0	1	0	1	8	6	1	Indicator Rod	
18	V	D		0	0	0	3	3	1	0	1	Oil Equipment Assembly (When Specified)	
19				0	3	0	0	6	1	0	4	Screw (All Motors Except 230/460 V Motor)	
				0	1	0	0	6	2	8	4	Screw (With 230/460 Volt Motor)	
	H	L		0	0	0	5	0	5		4	Washer	

KEY	PART NUMBER							PCS	NAME				
20	V	D	A	0	0	0	3	7	8	2	A	1	Rear Cover (All Motors Except 230/460 V Motor)
	Z	V		0	0	0	3	7	8	2	A	1	Rear Cover (With 230/460 V Motor)
21				0	3	5	0	3	1	0		2	Screw
22	C	M		0	0	0	2	8	4	0		2	Lock Washer
23	M	D		0	0	0	2	8	8	3	B	2	Nut
24	M	D		0	0	0	3	6	2	3	B	4	Washer
25	R			0	0	0	7	9	8	0		1	Catch
	R	A		0	0	0	7	9	4	2		3	Shim
26	T	L		0	0	0	4	7	5	7		9	Washer
27	M	D		0	0	0	3	5	9	1		9	Lock Washer
28	7			0	0	0	1	5	0	2	B	9	Nut
29	V	D		0	0	0	3	7	8	8		2	Tool Shelf
30				0	5	5	1	0	1	2		1	Screw
	T	L		0	0	0	6	4	6	6		1	Plug
31	6	W		0	0	0	9	4	5	4		1	Adjustable Foot
32	V	D		0	0	0	8	2	9	7		1	Collet Door
33	V	D	D	0	0	0	1	9	9	0		1	Pedestal
34	D	V	B	0	0	1	0	3	0	0		1	Pivot Screw
35	V	D		0	0	1	0	2	9	9	B	1	Support
36				0	1	0	0	5	0	8		1	Screw
37	F			0	0	0	7	8	1	5		1	Washer
38				0	5	5	0	3	0	6		1	Screw
39	V	D		0	0	0	6	5	7	8	0	1	Knob Assembly Consisting Of:
	K	L		0	0	0	6	5	7	8		1	Knob
	V	D		0	0	0	8	2	6	5		1	Stud
	5	P		0	0	0	2	8	4	3		2	Nut

PEDESTAL ASSEMBLY (DSM FIVE-NINE R AND VBS-R)

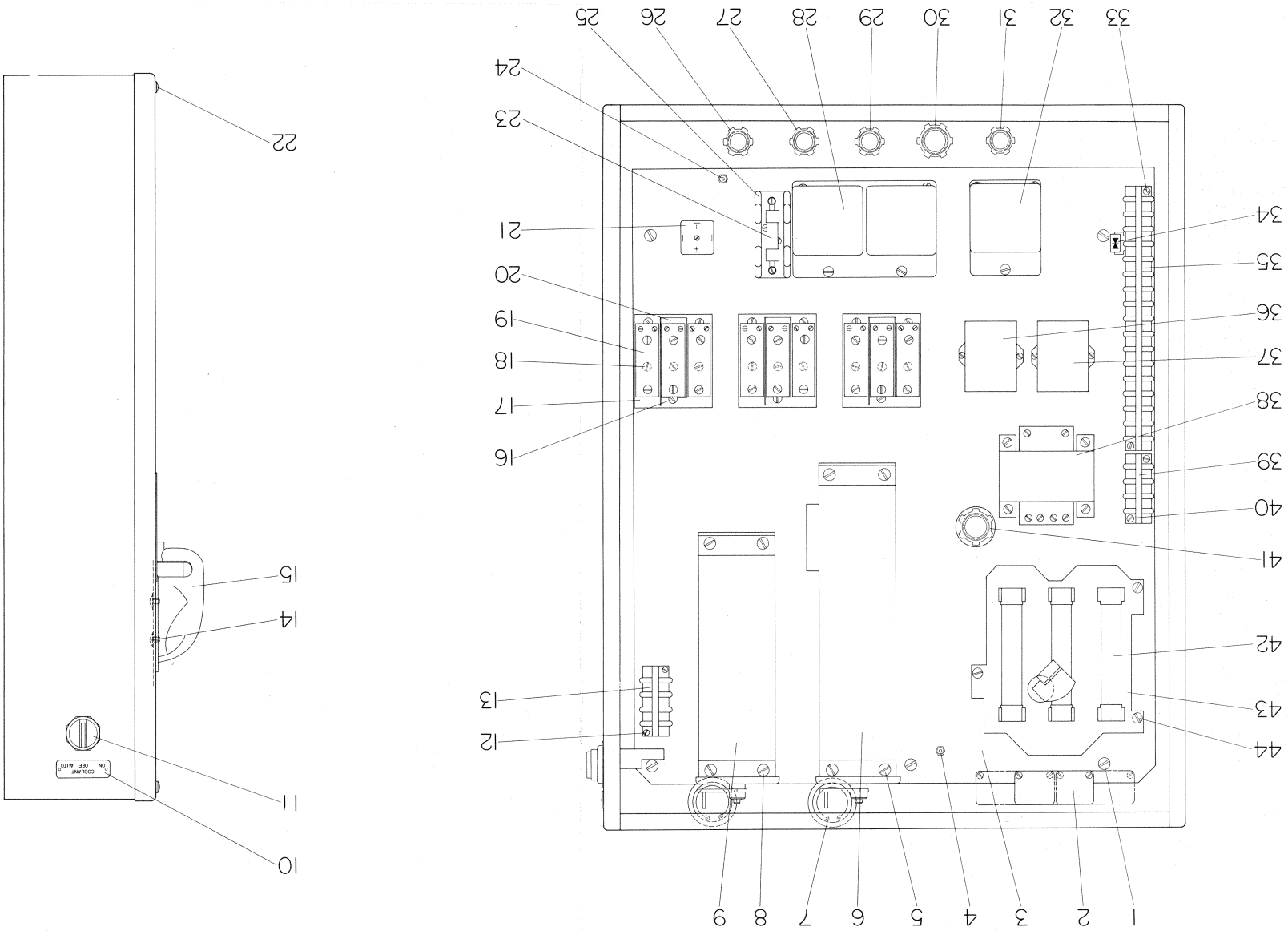


KEY	PART NUMBER						PCS	NAME					
1	V	Q	0	0	9	6	2	5	1 pr.	Spindle Drive Belt			
2	Q	C	0	0	3	3	4	6	1 pr.	Countershaft Drive Belt			
3			0	1	5	0	6	6	4	B	4	Screw	
	H	L	0	0	0	0	5	0	5		4	Washer	
4	V	Q	B	0	0	0	3	7	8	2	1	Rear Cover Assembly	
5	Q	C	0	0	1	0	4	8	0	0	5	#5 Change Pulley	
6	T	P	0	0	0	6	8	3	6		4	Nut	
	M	D	0	0	0	6	8	2	6		4	Washer	
7	V	Q	0	0	0	1	9	9	5		2	Eye Bolt	
8	V	S	0	0	0	9	6	7	2		4	Rubber Bushing	
9	H	C	B	0	0	0	9	6	6	3	2	Stud For Motor Plate	
10	U		0	0	0	3	9	8	5		2	Lock Washer	
11	Q	C	0	0	0	6	8	2	6		4	Washer	
12	U	A	0	0	0	4	0	3	4		4	Nut	
13			0	1	5	0	8	1	6		4	Screw	
	M	D	0	0	0	3	2	2	7		4	Lock Washer	
14	Q	C	A	0	0	1	1	4	5	0	2	Air Duct	
	Q	C	0	0	1	0	5	6	5		14"	Top Gasket	
	Q	C	0	0	1	0	7	7	8		1	Bottom Gasket	
15	2	2	0	3	7	6	1	5	5	1	F	1	Blower Motor (200V, 208V, 230V)
	4	4	0	3	7	6	1	5	5	1	F	1	Blower Motor (380V, 400V, 415V, 440V)
	5	5	0	3	7	6	1	5	5	1	F	1	Blower Motor (575V)
	Z	H	0	0	1	1	0	0	3		1	Connector	
	5	0	0	0	1	0	2	2	5	9	0	1	90° Connector
16	Q	C	0	0	1	0	4	6	6		1	Housing For Fan	
	D	Q	R	0	0	1	0	4	6	4		1	Blower Wheel
				0	5	5	0	6	0	6		1	Set-Screw
17				0	1	5	1	0	3	2		4	Screw
	W	A	0	0	0	9	1	9	1		4	Washer	
18	V	Q	A	0	0	0	1	9	9	1	0	1	Motor Mounting Plate
19	5		0	0	0	1	4	6	6		2	Nut	
20	Q	C	A	0	0	1	0	7	8	1		4	Post For Pulley
21	6	W	0	0	0	9	4	5	4		1	Adjustable Foot	
22			0	5	5	1	0	1	2		1	Screw	
	T	L	0	0	0	6	4	6	6		1	Plus	
23	Q	C	0	0	1	0	4	8	0	0	1	#1 Change Pulley	
24	Q	C	0	0	1	0	4	8	0	0	3	#3 Change Pulley	
25	O	L	0	0	0	7	6	2	1		4	Washer	
26	5	P	0	0	0	6	4	3	4		2	Lock Washer	
27	O	R	0	0	0	1	4	1	8		8	O-Ring	

KEY	PART NUMBER						PCS	NAME					
28			0	1	5	1	3	2	8		4	Screw	
	5	P	0	0	0	6	4	3	4		4	Lock Washer	
	5	P	0	0	1	4	6	6			4	Nut	
29	Q	C	0	0	1	0	4	8	0	0	2	#2 Change Pulley	
30	Q	C	0	0	1	0	4	8	0	0	4	#4 Change Pulley	
31			0	3	5	0	3	1	0		1	Screw	
	M	D	0	0	0	3	6	2	3		B	4	Washer
	C	M	0	0	0	2	8	4	0		2	Lock Washer	
	C	M	0	0	0	2	8	8	3		B	2	Nut
32	R		0	0	0	7	9	8	0		1	Catch For Door	
	R	A	0	0	0	7	9	4	2		2	Shim	
33	Q	C	0	0	1	0	4	8	0	0	6	#6 Change Pulley	
34	U	E	0	0	0	4	9	2	0		2	Cotter Pin	
35	V	D	0	0	0	6	5	7	8	0	1	Knob Assembly	
36	7		0	0	0	1	5	0	2		B	9	Nut
	M	D	0	0	0	3	5	9	1		9	Lock Washer	
	T	L	0	0	0	4	7	5	7		9	Washer	
37	U		0	0	0	6	9	1	6		7	Rubber Plug	
38	V	D	A	0	0	0	3	3	1	5		1	Oil Pan
39	V	D	0	0	0	4	9	1	1		2	Cork Pad	
40	V	D	0	0	0	8	2	9	7		1	Collet Door Assembly	
41	V	D	0	0	0	4	9	1	1		1	Cork Pad	
42	Q	C	0	0	0	3	7	8	0		1	Motor Door Assembly	
43	K	H	0	0	1	0	3	6	6		E	1	Warning Tag — European Machines Only
	R		0	0	0	8	0	4	4		2	Pin — European Machines Only	
44	L	H	0	0	0	4	6	9	8		M	1	Tag — Mexican Machines Only
	R		0	0	0	8	0	4	4		4	Pin — Mexican Machines Only	
45	F	P	C	0	0	0	4	6	9	8		1	Nameplate
				0	6	5	0	1	0	4		4	Screw
46	V	D	0	0	0	4	9	1	1		1	Cork Pad	
47	L	H	0	0	0	4	6	9	8		C	1	Tag — Canadian Machines Only
				0	6	5	0	1	0	4		4	Screw — Canadian Machines Only
48	V	D	0	0	1	0	5	6	5	0	1	1	Seal and Insert Assembly
49	Q	C	0	0	0	3	1	6	1	0	2	1	Speed Chart (60 Hertz)
	Q	C	0	0	0	3	1	6	1	2	5	1	Speed Chart (50 Hertz)
	R		0	0	0	8	0	4	4		4	4	Pin

KEY	PART NUMBER						PCS	NAME						
50	V	Q	0	0	0	9	8	5	8		1	Instruction Plate		
51	R		0	0	0	8	0	4	4		4	Pin		
52	V	D	0	0	0	4	9	1	1		2	Cork Pad		
53	K	L	0	0	0	9	9	7	4		2	Rubber Boot		
	1	2	5	0	0	0	8	2	3	1	2	Retaining Ring		
54	V	Q	0	0	0	3	2	8	8		2	Pull Rod		
55	W	E	0	0	0	2	8	5	0		2	Link For Pull Rod		
56	2	3	0	3	9	6	2	6	2	3	1	Main Drive Motor (200V and 280V, 50Hz, and 230V 60Hz)		
	4	1	5	3	9	5	2	6	2	3	1	Main Drive Motor (380V, 400V, 415V, 440V, 50Hz)		
	2	0	8	3	9	6	2	6	2	3	1	Main Drive Motor (208V 60Hz)		
	4	4	0	3	9	6	2	6	2	3	1	Main Drive Motor (460V 60Hz)		
	5	5	0	3	9	6	2	6	2	3	1	Main Drive Motor (575V 60Hz)		
	2	3	0	3	9	5	2	6	2	3	1	Main Drive Motor (230V 50Hz)		
57	V	Q	0	0	0	1	9	9	0	3	2	1	Screen	
58	Q	C	0	0	1	0	7	5	5		4	4	Spacer For Case	
59	V	Q	0	0	1	0	4	7	4	0	1	1	Intake For Blower	
60			0	3	0	0	6	0	8		3	3	Screw	
61	T	L	0	0	0	9	5	3	2		2	2	Rubber Grommet	
62			0	1	5	0	7	2	0		2	2	Screw	
63	H	L	A	0	0	0	9	9	9		1	1	Lower Support Plate	
64	Q	C	0	0	0	9	9	9	7		2	2	Rubber Insulator	
65	H	L	A	0	0	0	9	9	8		1	1	Upper Support Plate	
66	V	Q	A	0	0	1	0	0	0		1	1	Bolt For Motor Plate	
	5	P	0	0	0	6	4	3	3		1	1	Washer	
67	V	S	0	0	0	9	6	7	2		4	4	Rubber Bushing	
68	V	Q	0	0	0	1	9	9	5	0	1	2	Support For Motor Plate	
69	Q	C	0	0	0	1	8	3	6		2	2	Nut For Support	
70	Q	C	0	0	0	6	8	2	6		2	2	Washer	
71	Q	C	0	0	0	9	6	6	3		2	2	Stud For Support	
72	Q	C	0	0	1	0	3	4	5		1	1	Locating Ring	
73			0	5	5	0	5	0	4		1	1	Screw	
74	V	Q	C	0	0	0	1	9	9	0		1	1	Pedestal Base
75	V	D	0	0	0	3	7	8	8		2	2	Tool Shelf	

ELECTRIC CONTROL CASE (DV FIVE-NINE, DSM FIVE-NINE, AND VBS)

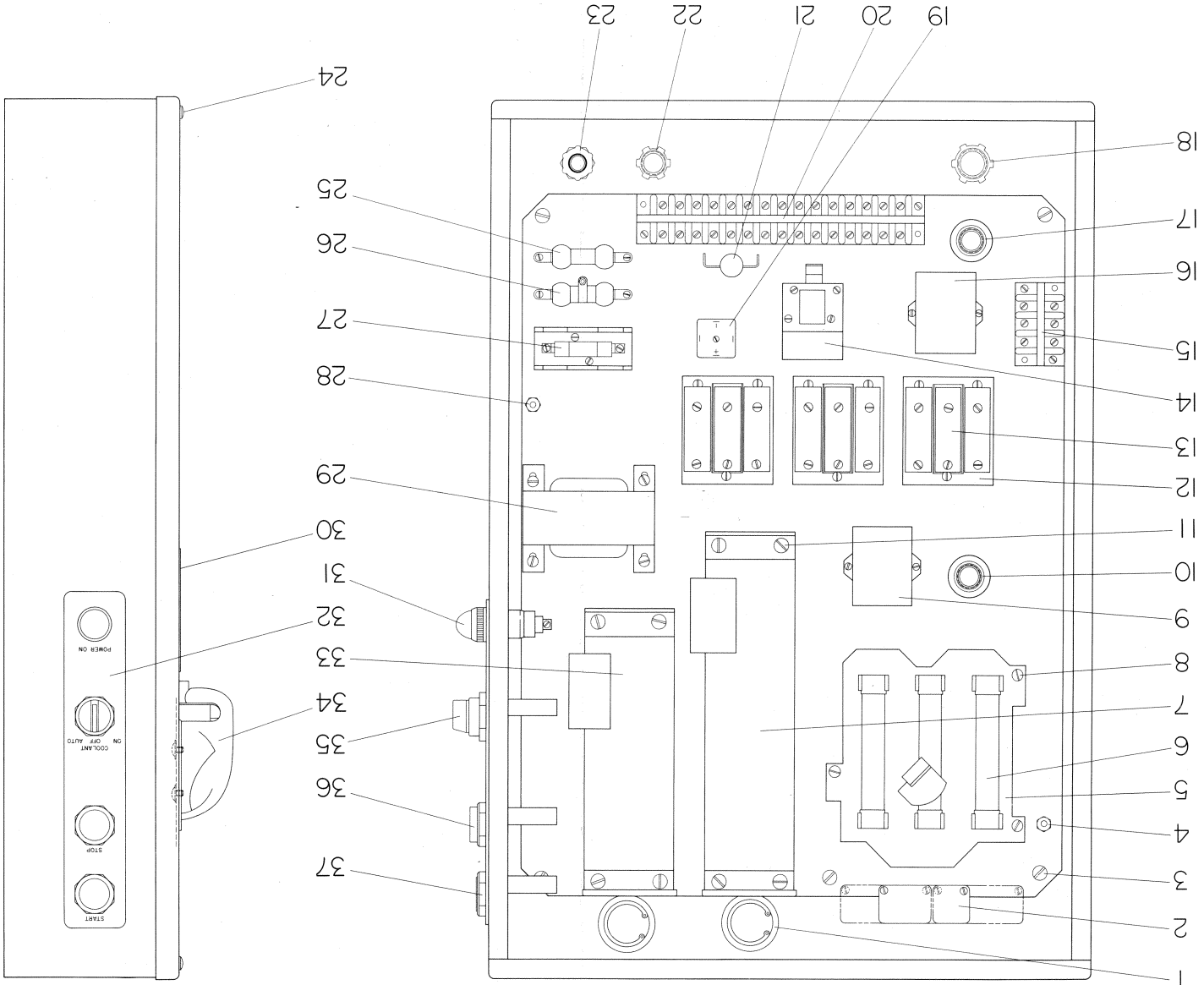


KEY	PART NUMBER										PCS	NAME	
1				0	3	5	0	6	0	8		5	Mounting Plate Screw
2	K	L		0	0	1	0	3	0	2		1	Instruction Plate
				0	3	5	0	1	0	4		2	Screw
	K	L		0	0	1	0	3	0	2	F	1	Instruction Plate (French)
				0	3	5	0	1	0	4		2	Screw
3	V	D	H		0	0	0	1	9	0		1	Switch Plate Panel
4	D	V			0	0	1	0	5	4		1	Ground Post
	D	V			0	0	1	0	5	4		3	Nut
	W	D			0	0	0	9	0	2		1	Washer
5					0	3	5	0	5	0		4	Screw
	6				0	0	0	9	1	8		4	Lock Washer
6	D	V			0	0	0	2	8	3		1	2:1 Cam Speed Switch
	D	V	B		0	0	0	2	8	3		1	3:1 Cam Speed Switch
7	K	L	A		0	0	0	9	9	7		2	Rubber Boot
	1	3	7		0	0	0	8	2	3	0 1	2	Retaining Ring
8					0	3	5	0	5	0		4	Screw
	6				0	0	0	9	1	8		4	Lock Washer
9	G	C			0	0	0	2	8	3		1	Cam Reverse Switch
*10	J	A	Q		0	0	1	0	3	6		1	Legend Plate
	R				0	0	0	8	0	4		2	Escutcheon Pin
*11	V	D			0	0	0	9	5	3		1	Coolant Switch
†	C	H			0	0	0	7	8	7		1	Cover
	C	H			0	0	0	7	8	7	A	1	Washer For Cover
	1	9			0	0	0	9	4	3		1	O-Ring
	5	P			0	0	0	2	8	4		1	Nut
					0	3	5	0	3	1		2	Screw
	W	D			0	0	0	9	0	2		2	Star Washer
13	H	3			0	0	0	8	1	1		1	Terminal Strip
	V	D			0	0	0	9	1	7	1 7	1	Marker Strip
	D	S			0	0	0	9	1	7		2	Drive Pin
14					0	3	5	0	3	0		3	Screw
	W	D			0	0	0	9	0	2		3	Star Washer
15	J	G			0	0	1	0	3	5		1	Operating Handle Assembly
	J	G			0	0	1	0	3	5	G	1	Gasket
	J	G			0	0	1	0	0	1	1 P	1	Operating Shaft
16					0	3	6	0	3	0		9	Screw
17	K	L			0	0	0	9	8	6		3	Bracket
18					0	3	5	0	2	0		9	Screw
19	H	V	A		0	0	0	8	1	2		9	Overload Relay
20	K	L			0	0	1	1	0	6		3	Insulator
21	N	C			0	0	0	9	3	3	B	1	Rectifier
					0	3	6	0	2	1		1	Screw
22	G	D			0	0	1	0	4	6		2	Captive Screw
	G	D			0	0	1	0	7	5		2	Spacer
23	V	D			0	0	0	9	6	1		1	Fuse
24	D	V			0	0	1	0	5	4		1	Ground Post
	D	V			0	0	1	0	5	4		3	Nut

KEY	PART NUMBER										PCS	NAME	
	W	D			0	0	0	9	0	2		1	Washer
25	D	V			0	0	1	0	0	1		1	Fuse Holder
					0	3	5	0	2	0		2	Screw
26	5	0			0	0	1	0	2	2	4 5	1	45° Connector
27	5	0			0	0	1	0	2	2	5 9 0	1	90° Connector
28	V	D			0	0	1	0	2	3		1	Contact For Speed Charge Motor
					0	3	6	0	3	0		4	Mounting Screw
29	5	0			0	0	1	0	2	2	5 9 0	1	90° Connector
30	7	5			0	0	1	0	2	2	5 9 0	1	90° Connector
*31	5	0			0	0	1	0	2	2	5 9 0	1	90° Connector
†	D	V			0	0	0	7	8	7		1	Knockout Seal
32	R	G	A		0	0	0	8	7	7	B	1	Contact
					0	3	6	0	3	0		3	Screw
33					0	3	5	0	3	1		2	Screw
	W	D			0	0	0	9	0	2		2	Star Washer
34	S	D	A		0	0	1	1	2	9		1	Arc Suppressor
	D	Q	R		0	0	1	0	4	7		2"	Wire Insulation
	8	7	3		0	0	0	9	1	8	R A	2	#10 Sta Kon® Connector
35	H	1	6		0	0	0	8	1	1		1	Terminal Strip
	V	D			0	0	0	9	1	7	1 6	1	Marker Strip
	D	S			0	0	0	9	1	7		2	Drive Pin
36	L	H			0	0	0	8	7	7		1	Magnetic Contactor
					0	3	5	0	3	1		2	Screw
*37	L	H			0	0	0	8	7	7		1	Magnetic Contactor
					0	3	5	0	3	1		2	Screw
38	D	V	A		0	0	0	8	7	7	6 2 8	1	Transformer (208 Volt, 60 Hz Machine Only)
	D	Q	B		0	0	0	8	7	7		1	Transformer (230 volt-460 volt, 60 Hz Machine Only)
	K	L			0	0	0	8	7	7	6 0 2	1	Transformer (575 Volt, 60 Hz Machine Only)
	5	0			0	0	0	8	7	7	V	1	Transformer (All 50 Hz Machines)
39	H	3			0	0	0	8	1	1		1	Terminal Strip
	D	V			0	0	0	9	1	7	0 3	1	Marker Strip
	D	S			0	0	0	9	1	7		2	Drive Pin
40					0	3	5	0	3	1		2	Screw
	W	D			0	0	0	9	0	2		2	Star Washer
41	7	5			0	0	1	0	2	2		1	Straight Connector
42	C	C			0	0	0	9	6	1	0 3	3	Fuse (200 V.- 230 V.)
	L	H			0	0	0	9	6	1		3	Fuse (380 V. - 575 V.)
43	J	G			0	0	1	0	0	1		1	Disconnect Switch
44					0	3	6	0	3	0		3	Screw

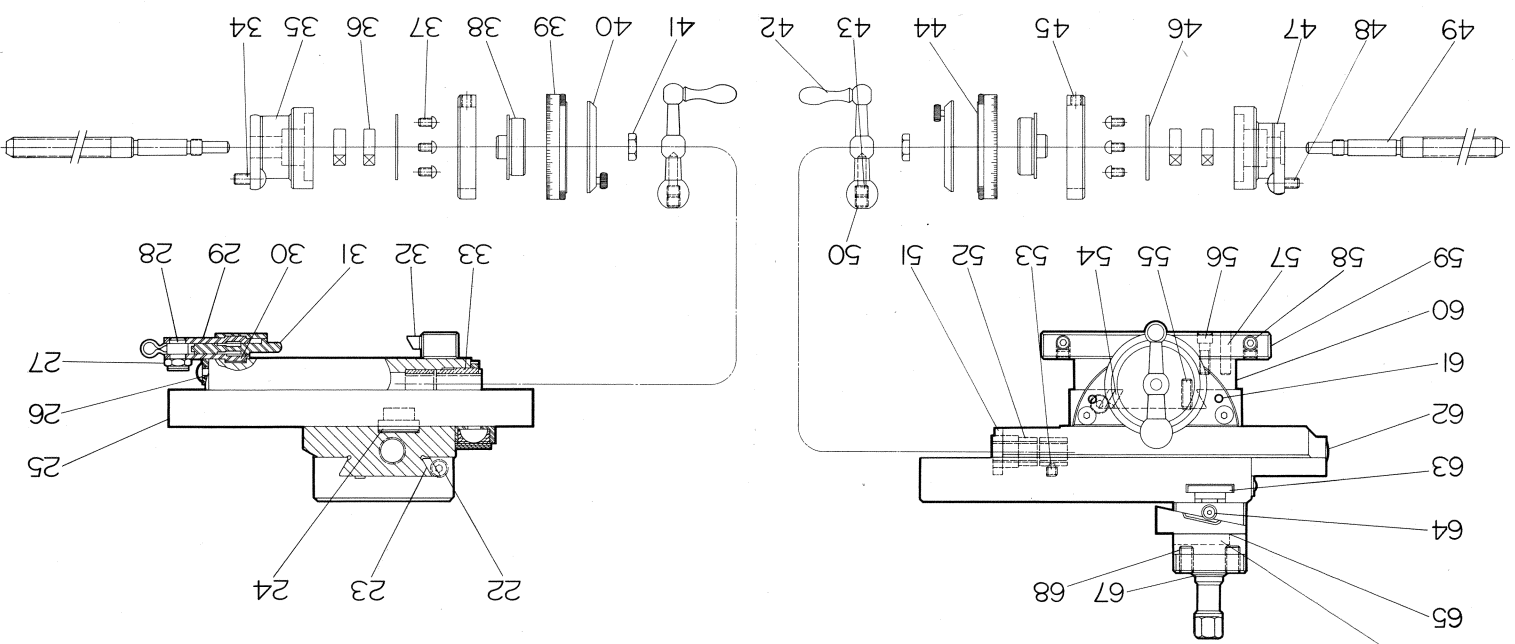
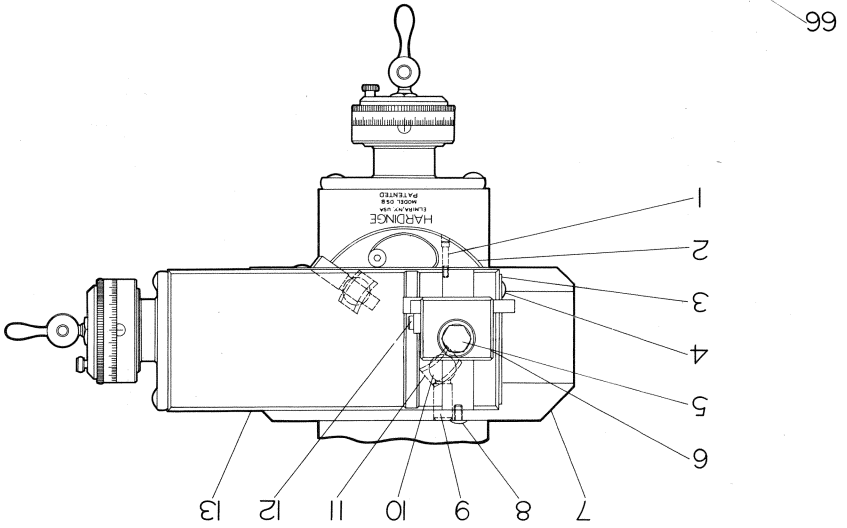
* Used only on machines with coolant.
 † Used only on machines without coolant.

ELECTRIC CONTROL CASE (DSM FIVE-NINE R AND VBS-R)

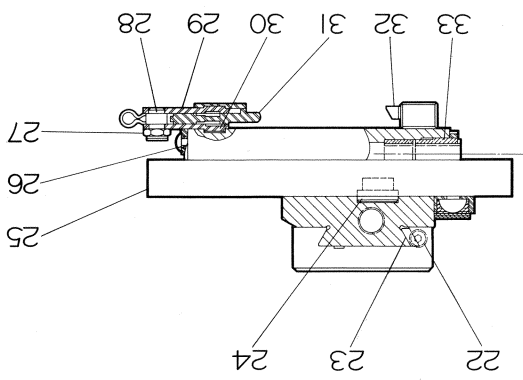
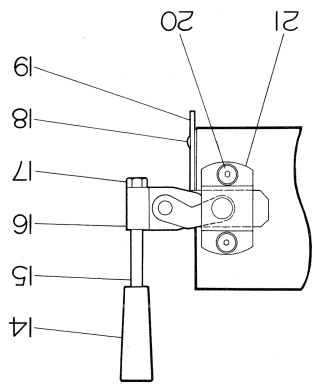


KEY	PART NUMBER										PCS	NAME	
1	K	L	0	0	0	9	9	7	4			2	Rubber Boot
	1	2	5	0	0	0	8	2	3	1	0		1
2	K	L	0	0	1	0	3	0	2			1	Instruction Plate
			0	3	5	0	1	0	4				2
	K	L	0	0	1	0	3	0	2		F	1	Instruction Plate (French)
			0	3	5	0	1	0	4				2
3			0	3	5	0	6	0	8			5	Panel Mounting Screw
4	D	V	0	0	1	0	5	4	5			1	Ground Post
	D	V	0	0	1	0	5	4	6				3
	W	D	0	0	0	9	0	2	8			1	Washer
5	J	G	0	0	1	0	0	1	6			1	Disconnect Switch
6	C	C	0	0	0	9	6	1	0		0	3	Fuse (208V.-230V.)
	L	H	0	0	0	9	6	1	0				3
7	Q	C	0	0	0	2	8	3	5			1	Cam Speed Switch
8			0	3	6	0	3	0	7			3	Screw
9	L	H	0	0	0	8	7	7	5			1	Contact
10	5	0	0	0	1	0	2	2	5		9	0	90° Connector
	Z	H	0	0	1	1	0	0	3				1
11			0	3	5	0	5	0	8			4	Screw
12	K	L	0	0	0	9	8	6	4			3	Bracket
			0	3	6	0	3	0	7				9
13	H	V	A	0	0	0	8	1	2	2		9	Overload Relay
	K	L	0	0	1	1	0	6	3				3
14	Z	L	0	0	1	0	0	1	9			1	Control Relay
			0	3	5	0	2	0	6				4
15	H	3	0	0	0	8	1	1	6			1	Terminal Strip
	D	V	0	0	0	9	1	7	5		0		3
	D	S	0	0	0	9	1	7	5			2	
			0	3	5	0	3	1	2			2	Screw
16	L	H	0	0	0	8	7	7	5			1	Contact
			0	3	5	0	3	1	6				2
17	5	0	0	0	1	0	2	2	5		9	0	90° Connector
	Z	H	0	0	1	1	0	0	3				1
18	7	5	0	0	1	0	2	2	5			1	Connector
19	N	C	0	0	0	9	3	3	5			1	Rectifier
			0	3	6	0	2	1	0		B		1

KEY	PART NUMBER										PCS	NAME			
20	H	1	5	0	0	0	8	1	1	6		1	Terminal Strip		
	V	Q	0	0	0	9	1	7	5		1		5	1	Marker Strip
	D	S	0	0	0	9	1	7	5					2	Drive Pin
			0	3	5	0	3	1	2			2	Screw		
21	N	C	0	0	1	1	1	8	3		0	1	Varistor		
	D	Q	R	0	0	1	0	4	7	3				4"	Wire Insulation
22	5	0	0	0	1	0	2	2	5			1	Connector		
23	6		0	0	0	9	2	0	7			1	Connector		
24	G	D	0	0	1	0	4	6	5			2	Captive Screw		
	G	D	0	0	1	0	7	5	5				2	Bushing	
25	2	0	0	0	1	0	4	7	2		2	5	Resistor		
			0	3	5	0	2	0	6				2	Screw	
26	4	0	0	0	1	0	5	5	8		2	5	Variable Resistor		
			0	3	5	0	2	0	6				2	Screw	
27	D	V	0	0	1	0	0	1	7			1	Fuse Cutout		
	M	V	0	0	0	9	6	1	0		0		1	Fuse	
			0	3	5	0	2	0	6			2		Screw	
28	D	V	0	0	1	0	5	4	5			1	Ground Post		
	D	V	0	0	1	0	5	4	6				3	Nut	
29	W	D	0	0	0	9	0	2	8			1	Washer		
	Q	D	A	0	0	0	8	7	7	6				1	Transformer
			0	3	6	0	3	0	7			4	Screw		
30	D	V	C	0	0	0	8	0	7	4		1	Data Plate (Specify Voltage)		
	R		0	0	0	8	0	4	4				4	Escutcheon Pin	
31	D	Q	R	0	0	0	9	9	7	1		1	Pilot Light (Includes Bulb)		
	D	Q	R	0	0	1	0	5	5	7				—	Replacement Bulb Only
32	V	D	0	0	1	0	3	7	2			1	Legend Plate		
33	Q	C	0	0	0	2	8	3	4			1	Cam Reverse Switch		
			0	3	5	0	5	0	8				4	Screw	
34	J	G	0	0	1	0	3	5	9			1	Operating Handle Assembly		
	J	G	0	0	1	0	0	1	6		1		P	Operating Shaft	
			0	3	5	0	3	0	4			3		Screw	
	W	D	0	0	0	9	0	2	8			3	Lock Washer		
35	V	D	0	0	0	9	5	5	3			1	Coolant Switch		
36	J	6	0	0	0	9	9	7	2			1	Stop Switch		
37	L	H	0	0	0	9	9	7	3			1	Start Switch		



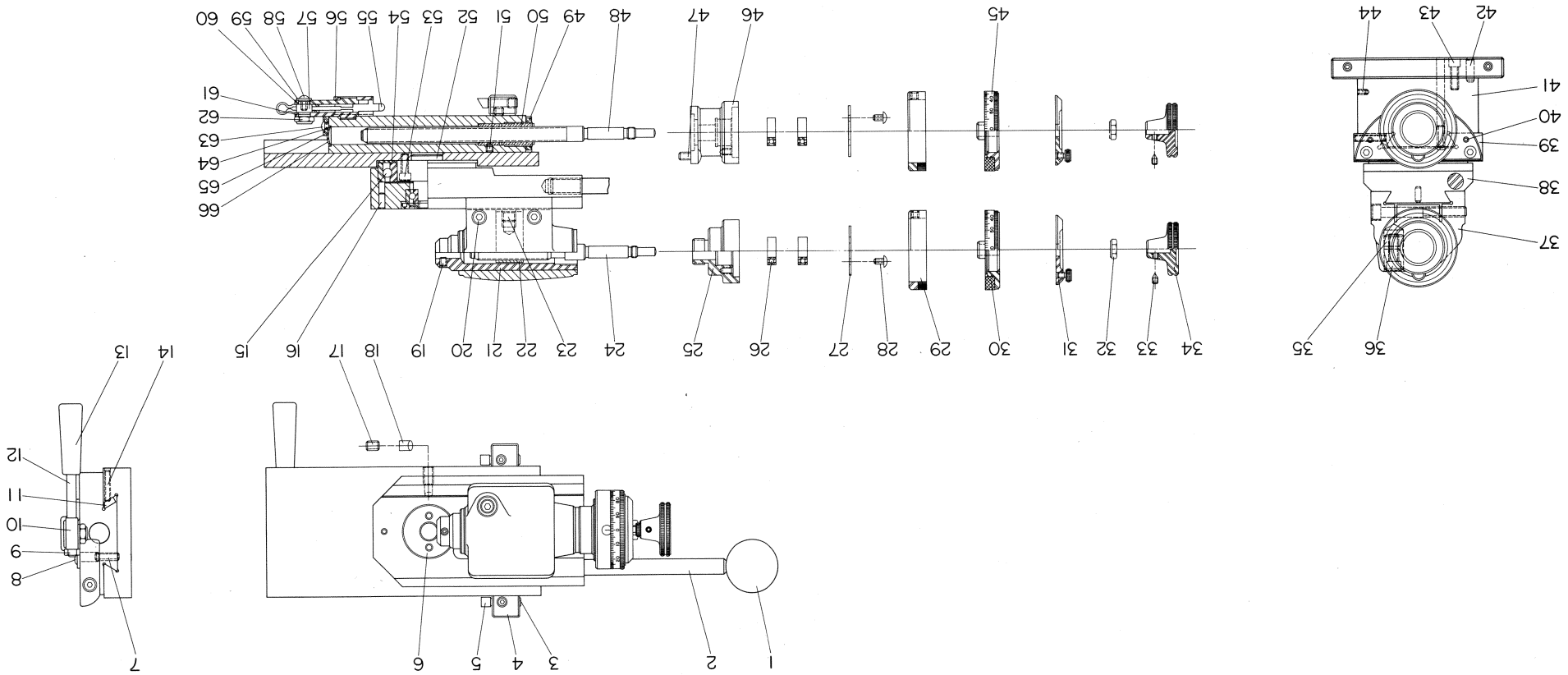
COMPOUND SLIDE REST



KEY	PART NUMBER							PCS	NAME	
1		0	1	0	0	1	1	0	2	Screw
2	D S	0	0	1	0	7	2	5	1	Magnifier and Bracket Assembly Consisting Of:
	D S	0	0	1	0	5	6	2	1	Bracket
	D S A	0	0	1	0	5	6	3	1	Graduation Magnifier
	D S	0	0	1	0	5	6	4	1	Clamp Ring
	D S	0	0	1	0	5	6	8	1	Bushing
	D S	0	0	1	0	5	9	6	1	Cover
	D S	0	0	1	0	5	9	7	1	Bowed Washer
		0	3	0	0	3	0	6	1	Screw
3	D S	0	0	0	8	0	5	0	1	Wiper
4		0	3	0	0	3	0	4	2	Screw
5	D S A	0	0	1	0	5	9	5	1	Cap
6	D S	0	0	1	0	5	9	2	0 1	Tool Block
7	D S C	0	0	0	0	3	6	2	1	Swivel Slide
8		0	3	0	0	3	0	6	2	Retaining Screw
9	D S	0	0	0	0	3	6	3	2	Eccentric
10	D S	0	0	1	0	6	2	5	2	Lock Bolt
11	D S	0	0	0	0	3	6	5	2	Nut
12	D S	0	0	1	0	5	9	1	1	Screw
13	D S B	0	0	0	0	3	5	7	1	Top Slide
14	D S	0	0	0	6	1	2	6	1	Knob
15	D S	0	0	0	6	1	5	8	1	Handle
16	D S	0	0	0	8	2	9	1	1	Link
17	C M	0	0	0	2	8	4	3	1	Nut
18		0	3	0	0	3	0	6	1	Screw
19	D S	0	0	1	0	5	0	9	1	Retaining Latch
20		0	3	0	0	5	0	8	2	Screw
21	D S	0	0	0	8	7	1	6	1	Bracket
22	6 9	0	0	0	6	1	6	0	4	Gib Adjusting Screw
23	D S A	0	0	0	0	3	5	8	1	Gib
24	D S	0	0	1	0	6	2	4	1	Pivot Plug
25	D S C	0	0	0	0	3	6	8	1	Bottom Slide
26	D S	0	0	1	0	5	6	8	1	Bushing
27	D S	0	0	0	0	3	3	1	1	Nut
28	D S A	0	0	0	8	2	9	2	1	Adjusting Screw
29	D S L	0	0	0	8	2	9	3	1	Lower Link
30	D S U	0	0	0	8	2	9	3	1	Upper Link
31	D S	0	0	0	8	2	9	0	1	Plunger
32	6 A	0	0	0	9	4	2	3	2	Lock Plug
33	D S A	0	0	0	0	3	2	8	2	Feed Screw Nut (10 Pitch)
	D S A	0	0	0	0	3	2	8	2	Feed Screw Nut (20 Pitch)
	D S A	0	0	0	0	3	2	8	0 1	Feed Screw Nut (Metric)
		0	3	0	0	6	1	0	M 1	End Cap Screw
34		0	3	0	0	6	1	0	4	End Cap For Bottom Slide
35	D S C	0	0	0	0	3	4	3	1	Bearings
36	L H	0	0	0	7	9	0	9	2 pr.	Bearings
37		0	3	5	0	3	0	5	8	Screw
38	L H	0	0	0	0	3	3	4	1	Bushing

KEY	PART NUMBER							PCS	NAME		
39	H L E	0	0	1	0	3	3	5	0 2	1	Dial Assembly (Bottom) Consisting Of:
	H L E	0	0	0	0	3	2	9		1	Dial
	L H	0	0	0	0	3	3	4		1	Bushing
	H L B	0	0	1	0	2	4	7		1	Mount For Dial
40	H L	0	0	1	0	2	4	6		2	Dial Lock And Washer Assembly Consisting Of:
	U	0	0	0	9	4	7	1		1	Dial Lock Screw
	H L A	0	0	0	8	4	7	3		1	Washer For Dial Lock
41	R	0	0	0	0	3	3	1		2	Nut
42	T A	0	0	0	0	3	3	5		2	Crank Assembly Consisting Of:
	T A	0	0	0	0	3	3	6		1	Crank
	T A	0	0	0	0	3	3	7		1	Handle
43	T A	0	0	0	0	3	3	8		2	Lock Screw
44	H L E	0	0	1	0	3	3	5	1 A	1	Dial Assembly (Top) Consisting Of:
	L H	0	0	0	0	3	3	4		1	Bushing
	H L E	0	0	0	0	3	2	9		1	Dial
	H L B	0	0	1	0	2	4	7		1	Mount For Dial
45	L H	0	0	0	0	4	0	7	0 1	2	Zero Ring
		0	5	7	0	5	0	4		2	Screw
46	R	0	0	0	7	8	9	3		2	Bearing Plate
47	D S B	0	0	0	0	3	4	0		1	End Cap For Top Slide
48		0	3	0	0	6	1	0		4	Screw
49	D S A	0	0	0	0	3	2	5		2	Feed Screw (10 Pitch)
	D S	0	0	0	0	3	2	6		2	Feed Screw (20 Pitch)
	D S	0	0	0	0	3	2	6	M 1	2	Feed Screw (Metric)
50		0	5	5	0	7	0	5		2	Screw
51	D S A	0	0	0	1	9	5	0		2	Nut
52	D S A	0	0	0	0	3	2	8		2	Feed Nut
	D S A	0	0	0	0	3	2	8	M	2	Feed Nut (Metric)
53		0	5	9	0	5	0	4		2	Screw
54	D S A	0	0	0	0	3	7	0		1	Gib
55	N	0	5	9	0	5	1	2		2	Screw
56		0	1	0	0	6	1	2		2	Screw
57	R	0	0	0	4	8	5	3		2	Dowel
58		0	5	5	0	7	0	4		4	Screw
59	6 F	0	0	0	0	3	7	2		2	Bed Stop
60	D S C	0	0	0	0	3	7	1		1	Base
61	C D	0	0	0	4	6	2	9		4	Dowel
62	C P	0	0	0	9	3	6	0	0 4	2	Expansion Plug
63	D S	0	0	1	0	5	9	4		1	Tee Bolt
64		0	3	0	0	1	0	4		1	Screw
65	D S	0	0	1	0	5	9	3	B	1	Bent Washer
66	D S	0	0	1	0	5	9	0		1	Wedge
67	3 7	0	0	0	0	6	4	1		1	Washer
68		0	5	5	0	7	1	0		2	Screw

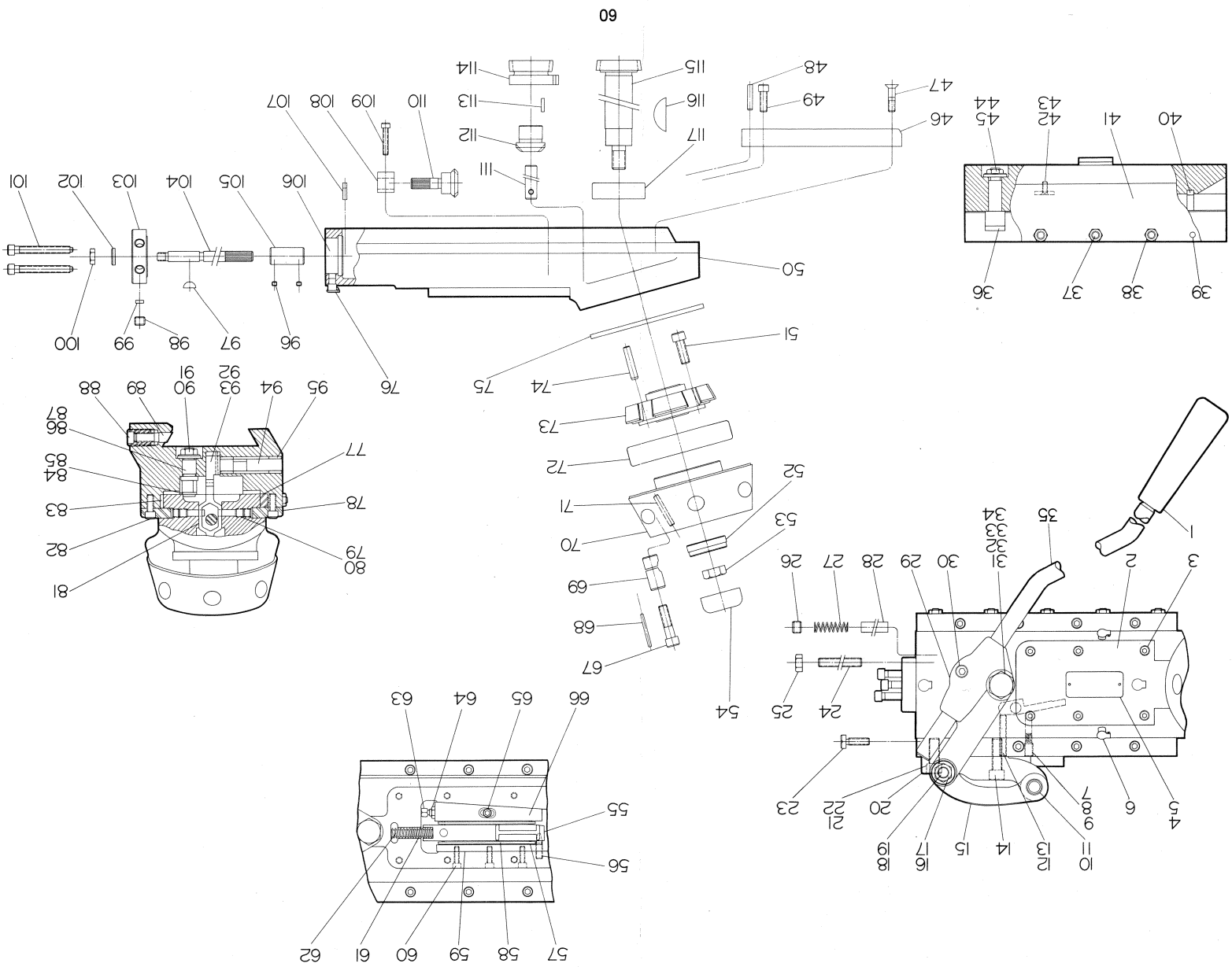
RADIUS TURNING ATTACHMENT



KEY	PART NUMBER										PCS	NAME
1	R	T	A	0	0	0	9	1	1	9	1	Knob
2	R	T	A	0	0	0	9	1	2	0	1	Lever
3				0	5	5	0	7	0	4	4	Screw
4	6	F		0	0	0	0	3	7	2	1	Bed Stop
5	6	A		0	0	0	9	4	2	3	2	Lock Plug
6	R	T		0	0	0	9	1	0	9	1	Bearing Nut
7	N			0	5	9	0	5	1	2	1	Screw for Slide
8				0	3	0	0	5	0	8	2	Screw
9	C	M		0	0	0	2	8	4	3	1	Nut
10	D	S		0	0	0	8	2	9	1	1	Link for Locking Handle
11	R	B		0	0	0	0	3	7	0	1	Gib for Slide
12	D	S		0	0	0	6	1	5	8	1	Handle for Bed Stop Lock
13	D	S		0	0	0	6	1	2	6	1	Knob
14	N			0	5	5	0	3	1	6	4	Gib Screw
15	R	T	A	0	0	0	9	2	2	7	1	Set of Bearings
16	T	L		0	0	0	6	6	1	5	2	Dowel Pin
17				0	5	5	0	8	0	7	1	Lock Screw
18	R	T		0	0	0	9	1	1	4	1	Locking Plug
19				0	5	6	0	6	0	5	1	Screw for Tool Bit
20				0	1	0	0	8	4	4	2	Screw
21	R	T	A	0	0	0	9	1	1	5	1	Spindle
22	R	T	A	0	0	0	0	4	0	2	1	Nut (English)
	R	T		0	0	0	0	4	0	2	1	Nut (Metric)
23	5			0	0	0	1	4	6	7	1	Pipe Plug
24	R	T	A	0	0	0	9	1	0	3	1	Feed Screw (English)
	R	T	A	0	0	0	9	1	0	3	1	Feed Screw (Metric)
25	R	T	B	0	0	0	0	4	0	7	1	Bearing for Feed Screw
26	L	H		0	0	0	7	9	0	9	2	Pair of Bearings
27	R			0	0	0	7	8	9	3	2	Plate for Bearings
28				0	3	5	0	3	0	5	8	Screw
29	L	H		0	0	0	0	4	0	7	2	Zero Ring
30	H	L	E	0	0	1	0	3	3	5	1	Dial and Mount Assembly (English)
	K	L		0	0	1	0	3	3	5	1	Dial and Mount Assembly (Metric)
31	H	L		0	0	1	0	2	4	6	1	Washer and Lock Screw Assembly
32	R			0	0	0	0	3	3	1	2	Nut
33	R	T	A	0	0	0	9	1	1	3	2	Lock Screw

KEY	PART NUMBER										PCS	NAME
34	R	T		0	0	0	9	1	0	4	2	Handle for Screw
35	R	T		0	0	0	9	1	1	1	1	Binding Nut for Spindle
36				0	1	0	0	7	1	4	1	Screw for Binding Nut
37	R	T	B	0	0	0	9	1	0	1	1	Tool Holder Body
38	R	T	A	0	0	0	9	1	0	6	1	Swivel Base
39	R	T	C	0	0	0	9	1	0	7	1	Bottom Slide
40	C	D		0	0	0	4	6	2	9	2	Dowel Pin
41	D	S	C	0	0	0	0	3	7	1	1	Base
42	R			0	0	0	4	8	5	3	2	Pin For Bed Stop
43				0	1	0	0	6	1	2	2	Screw
44				0	5	5	0	3	0	3	2	Screw
45	H	L	E	0	0	1	0	3	3	5	0	Dial and Mount Assembly (English)
	K	L		0	0	1	0	3	3	5	1	Dial and Mount Assembly (Metric)
46	D	S	C	0	0	0	0	3	4	3	1	End Cap for Slide
47				0	3	0	0	6	1	0	2	Screw
48	D	S	A	0	0	0	0	3	2	5	1	Feed Screw (English)
	D	S		0	0	0	0	3	2	6	1	Feed Screw (Metric)
49	D	S	A	0	0	0	1	9	5	0	1	Nut
50	D	S	A	0	0	0	0	3	2	8	1	Feed Screw Nut (English)
	D	S	A	0	0	0	0	3	2	8	1	Feed Screw Nut (Metric)
51				0	5	9	0	5	0	4	1	Set Screw
52	R	T	A	0	0	0	9	1	0	8	1	Pivot Post
53				0	1	0	0	6	1	0	4	Screw for Pivot Post
54	R	T	A	0	0	0	7	8	5	2	1	Lower Sealing Ring
55	D	S		0	0	0	8	2	9	0	1	Plunger for Bed Clamp
56	D	S		0	0	0	8	7	1	6	1	Bracket
57	D	S	A	0	0	0	8	2	9	2	1	Adjusting Screw
58				0	3	0	0	3	0	6	1	Screw
59	M	D		0	0	0	3	6	2	3	1	Washer
60	D	S	L	0	0	0	8	2	9	3	1	Lower Link
61	D	S	U	0	0	0	8	2	9	3	1	Upper Link
62	D	S		0	0	0	0	3	3	1	1	Nut
63				0	3	0	0	3	0	6	1	Screw
64	D	S		0	0	1	0	5	6	8	1	Bushing
65	D	S		0	0	1	0	5	0	9	1	Safety Latch
66	C	P		0	0	0	9	3	6	0	1	Plug

SIX-STATION TURRET ASSEMBLY (ROUND SHANK TOOLING)



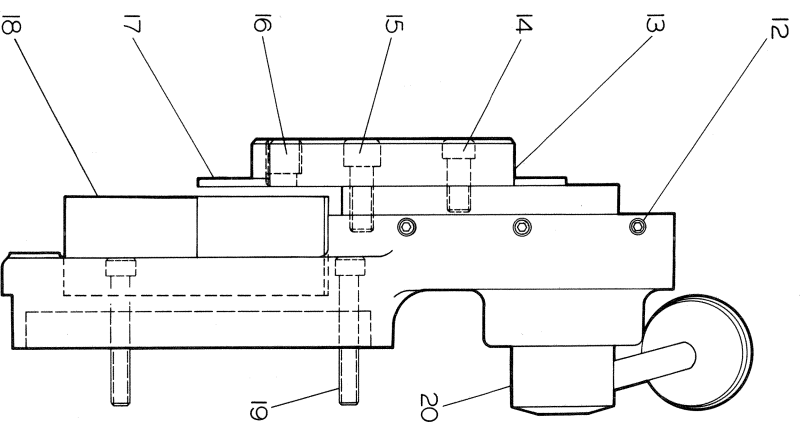
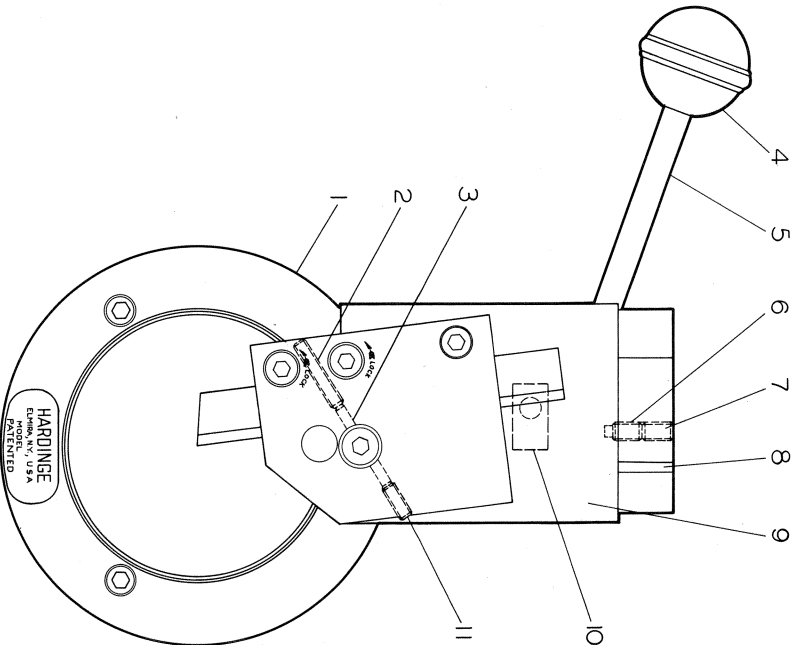
SIX-STATION TURRET ASSEMBLY (ROUND SHANK TOOLING)

KEY	PART NUMBER										PCS	NAME
* 1	7	9	A	0	0	0	8	6	7	2	1	Handle
** 2	7	9	B	0	0	0	0	6	0	2	1	Cover
** 3				0	1	0	0	3	0	6	6	Screw
4	7	9	B	0	0	1	0	0	1	1	1	Instruction Plate
5	R			0	0	0	8	0	4	4	2	Escutcheon Pin
6	T	M		0	0	0	7	8	0	6	3	Oil Cup
7	7	9	A	0	0	0	8	3	7	5	1	Plunger
8	7	9		0	0	0	8	3	5	1	1	Spring
9	N			0	5	0	0	8	0	8	1	Screw
10	3	7	B	0	0	0	0	6	4	0	1	Retaining Bolt
11	5	0		0	0	0	8	2	3	1	1	Ring
12				0	5	0	0	5	2	0	1	Stop Screw
13				0	5	0	0	5	0	4	1	Lock Screw
14				0	1	0	0	9	1	6	1	Screw
15	7	9		0	0	0	0	6	4	3	1	Link
16	3	7		0	0	0	0	6	4	1	1	Washer
17	E	N		0	0	0	8	3	4	4	1	Nut
18				0	1	0	0	9	2	8	1	Bolt
19	7	9		0	0	0	4	8	2	3	1	Bushing
20	7	9	A	0	0	0	0	6	3	7	1	Bracket
21				0	1	0	0	9	1	2	1	Screw
22	T	L		0	0	0	6	7	0	9	1	Dowel
23	7	9	A	0	0	0	8	3	1	8	1	Gib Screw
24	7	9		0	0	0	8	6	3	9	1	Stop Screw
25	C	P		0	0	0	1	0	4	1	1	Lock Nut
26	T	P		0	0	0	3	7	9	2	1	Screw
27	7	9		0	0	0	8	6	7	8	1	Spring
28	7	9		0	0	0	0	5	6	7	1	Plunger
29	7	9		0	0	0	8	3	1	7	1	Anchor Block
30				0	1	0	0	7	1	2	1	Screw
31	7	9		0	0	0	0	6	4	8	1	Pivot Post
32	3	7	A	0	0	0	0	6	4	9	1	Screw
33	F	B		0	0	0	6	9	0	6	1	Washer
34	E	N		0	0	0	8	3	4	4	1	Nut
*35	7	9	A	0	0	0	0	6	5	1	1	Lever
36	7	9		0	0	0	7	8	3	9	1	Stop Block
37	7	9		0	0	0	8	6	0	6	5	Screw
38	3			0	0	0	4	8	3	5	5	Nut
39	7	9		0	0	0	8	4	2	6	2	Dowel
40	7	9		0	0	1	0	1	0	7	1	Sealer
41	7	9	D	0	0	0	8	6	8	0	1	Base Assembly
												Consisting of:
	7	9	F	0	0	0	0	5	5	0	1	Base
	7	9	B	0	0	0	8	3	1	6	2	Way
42				0	3	1	0	4	0	8	2	Screw

KEY	PART NUMBER										PCS	NAME
43	7	9		0	0	0	8	3	0	8	1	Stop Plate
44	3	7		0	0	0	0	6	4	1	1	Washer
45	U			0	0	0	4	1	4	1	1	Nut
46	7	9	B	0	0	0	0	6	1	2	1	Gear Guard
47				0	3	1	0	6	1	6	2	Screw
48	7	9		0	0	0	8	8	1	6	2	Dowel
49				0	1	0	0	6	1	2	1	Screw
**50	7	9	D	0	0	0	0	5	7	4	1	Top Slide
51				0	1	0	0	7	1	6	3	Screw
52	7	9	A	0	0	0	0	6	2	1	1	Nut
53	5			0	0	0	1	4	6	6	1	Lock Nut
54	7	9		0	0	1	0	6	6	4	1	Cap
55	7	9	A	0	0	0	0	5	9	5	1	Index Plunger
56	7	9		0	0	0	8	3	3	4	1	Lock Screw
57	7	9		0	0	0	8	3	5	2	28	Roller
58	7	9		0	0	0	8	3	2	1	2	Roller Retainer
†59	7	9		0	0	0	8	3	2	2	1	Plate
†60				0	1	0	0	3	1	0	3	Screw
61	7	9	A	0	0	0	0	5	9	6	1	Plunger Spring
62	F	B		0	0	0	6	9	2	3	1	Pin
†63				0	5	0	0	6	1	4	1	Adjusting Screw
†64	7	9		0	0	0	8	3	2	5	1	Lock Nut
†65				0	1	0	0	3	1	2	1	Clamp Screw
†	7	9		0	0	0	8	7	1	7	1	Washer
†66	7	9	A	0	0	0	0	5	9	8	1	Screw
67				0	1	0	0	8	2	0	6	Gib
68	3	7	A	0	0	0	0	6	2	6	6	Screw
69	7	9		0	0	0	0	6	3	5	6	Pin
70	7	9		0	0	0	0	6	2	5	6	Binding Nut
71	C	D		0	0	0	4	6	3	0	1	Turret Head
72	D	V		0	0	0	8	3	5	3	2	Dowel
73	7	9	A	0	0	0	0	6	2	9	1	Bearing
74	7	9		0	0	0	8	8	1	5	1	Index Ring
75	7	9		0	0	0	8	3	4	6	3	Dowel
76	T	M		0	0	0	7	8	0	6	1	Ring
77	7	9		0	0	0	8	6	9	0	1	Oil Cup
78	7	9	A	0	0	0	0	5	6	2	1	Gib
79	7	9		0	0	0	8	3	2	0	2	Top Gib
80				0	5	0	0	7	0	4	2	Screw
81	7	9	A	0	0	0	8	6	7	9	2	Lock Screw
82				0	1	0	0	6	1	0	1	Trip Arm
83	7	9	A	0	0	0	0	5	6	6	8	Screw
84	7	9		0	0	0	8	3	1	2	1	Gib
85	7	9		0	0	0	8	2	3	1	1	Washer
86	7	9		0	0	0	7	8	4	5	1	Snap Ring
												Support Shaft

KEY	PART NUMBER										PCS	NAME
87	7	9		0	0	0	0	6	0	9	1	Pawl
88	7	9		0	0	0	9	0	9	5	1	Locking Screw
89	7	9		0	0	0	9	0	9	4	1	Locking Plug
90	3	7		0	0	0	0	6	4	1	1	Washer
91	U			0	0	0	4	1	4	1	1	Nut
	7	9	B	0	0	0	0	5	7	0	1	Trip Dog And Shaft
												Assembly (Consists
												Of Key Nos. 92-94)
92	7	9		0	0	0	0	5	7	1	1	Trip Dog
93	3			0	0	0	1	2	3	4	1	Taper Pin
94	7	9	C	0	0	0	0	5	7	2	1	Shaft
95	1	0		0	0	0	8	6	1	6	2	Bearing
96				0	6	4	0	3	0	2	2	Screw
97	3			0	0	0	1	7	5	9	1	Key
98				0	5	0	9	0	0	4	6	Lock Screw
99	3	7	C	0	0	0	0	5	8	4	6	Brass Plug
100	C	P		0	0	0	4	6	2	3	1	Nut
101	7	9		0	0	0	0	5	8	3	6	Stop Screw
102	5			0	0	0	1	8	9	5	1	Washer
103	7	9		0	0	0	7	8	4	2	1	Stop Screw Drum
104	7	9	A	0	0	0	0	5	8	8	1	Drive Shaft
105	7	9	A	0	0	0	7	8	4	1	1	Bushing
106	7	9		0	0	0	0	5	8	0	1	Drum
107	7	9	A	0	0	0	7	8	4	3	1	Washer
108	7	9	A	0	0	0	8	3	1	3	1	Support Block
109				0	1	0	0	3	1	2	1	Screw
110	7	9	A	0	0	0	0	5	9	0	1	Miter Pinion
111	7	9	A	0	0	0	0	5	7	5	1	Pinion Shaft
	7	9		0	0	0	8	3	3	1	1	Ratchet And Pinion
												Assembly (Consists
												Of Key Nos. 112-114)
112	7	9		0	0	0	8	3	3	0	1	Pinion
113	T	L		0	0	0	6	1	1	5	1	Key
114	7	9		0	0	0	6	1	6	1	1	Ratchet
115	7	9		0	0	0	8	3	2	8	1	Head Shaft And Gear
116	7	9		0	0	0	8	3	2	4	1	Key
117	7	9	A	0	0	0	8	6	7	3	1	Bearing

* Parts of Operating Lever Assembly 79A-0000651
 ** Parts of Top Slide Assembly †79D-0000574
 † Parts of Top Slide and Gib Assembly 79C-0008327



KEY	PART NUMBER					PCS	NAME				
1	V	C	C	0	0	0	9	6	1	1	Frame
2	A	D		0	5	5	0	3	1	1	Adjusting Screw
3	M	D		0	0	0	4	6	2	2	Pin
4	V	C	B	0	0	0	3	2	8	1	Knob
5	V	C		0	0	0	9	6	1	1	Handle
6	U			0	0	0	4	6	5	1	Pilot Screw
7	V	C		0	5	5	0	6	0	1	Lock Screw
8	V	C	C	0	0	0	9	6	1	1	Gib
9	V	C	F	0	0	0	9	6	1	1	Tool Slide
10	V	C		0	0	1	0	9	8	8	Guide Block
11	N			0	5	5	0	3	0	1	Adjusting Screw
12	V	C	E	0	0	0	9	7	2	4	Gib Screw
13	V	C	A	0	0	1	0	5	0	3	Tool Bit Clamp
14	V	C	A	0	0	1	0	1	1	1	Pivot Screw
15	V	C	A	0	0	1	0	1	1	1	Tool Bit Clamp
16	V	C	A	0	0	1	0	0	2	4	Adjusting Clamp Screw
17	V	C		0	0	0	9	6	3	9	Locking Screw
18	V	C		0	1	0	0	6	4	0	Tool Bit
19	V	C		0	1	0	0	6	4	8	Coolant Shield
20	V	C	B	0	0	0	9	7	5	3	Mounting Screw
											Eccentric

VERTICAL CUT-OFF ATTACHMENT

①



All marks indicated by TM or [®] are trademarks of Hardinge Brothers, Inc., except Kapseal[®], which is a registered trademark of Minnesota Rubber Co., Sta-Kon[®] and Ty-Rap[®], which are registered trademarks of T&B/Thomas & Betts, and Nylok[®], which is a registered trademark of USM Corp.